

SUBJECT:           **LAUREL HOUSE ARTIST RESIDENCY PROGRAM**

PREPARED BY:   **ARTS DIVISION**

Rebecca Ehemann, Arts Manager

Marcus Mitchell, Public Art Administrator

---

**STATEMENT ON THE SUBJECT:**

The Subcommittee will review the Laurel House Artist Residency Program (working title, subject to change), provide feedback, and recommend approval to the Arts and Cultural Affairs Commission.

**RECOMMENDATIONS:**

Recommend the Arts and Cultural Affairs Commission approve the Laurel House Artist Residency Program (working title, subject to change).

**BACKGROUND / ANALYSIS:**

In August 2022, consultant team Kimberli Meyer and Sara Daleiden, were contracted to lead the city in the development of the Laurel House Artist Residency Program (working title, subject to change). In October 2022, the City Council confirmed that the Laurel House and Park should be used for arts and culture programs and directed staff to issue an RFP for a qualified architectural design firm to continue the programming and design process.

In February 2023, the Arts and Cultural Affairs Commission provided direction for the artist-in-residence program to follow an interdisciplinary model, as proposed by the consultants, while also providing direction to revisit the other proposed models after the residency had established itself. In April 2023, the Subcommittee reviewed a draft version of the Laurel House Artist Residency Program and provided feedback.

In the summer of 2023, Page & Turnbull Architectural team was brought on board to begin the architectural plan development for the site. The development of the Artist Residency Program was slowed to align with the architectural plan development.

The Laurel House Artist Residency document, Attachment A, is near completion and represents the feedback and input received from the community, artist residency administrator's cohorts, and the Arts and Cultural Affairs Commission, between August 2022 and December 2023.

## OUTREACH

The city has led 5 Neighborhood Conversations (in-person and virtual) between December 2022 and September 2023. At the meetings, the community was invited to provide feedback to inform the residency program and designs for the renovation of the property. On average the attendance at the community meetings ranged from 25-30 people in attendance. To date, over 140 community members have participated in the process through email, public comment, and attendance at community meetings.

In addition, staff has joined two artist residency program administrator cohorts in both the Los Angeles region and the Southwestern United States region. The cohorts meet monthly to share resources and information about individual programs. In September 2023 the consultant team organized a gathering for regional artist residency program administrators including representatives from City of Santa Monica, Feminist Center for Creative Work, Grand Central Art Center, HomeLA, MAK Center for Art and Architecture, Tom of Finland Foundation, Villa Aurora/Thomas Mann House. During the gathering the consultant team and staff were able to share the initial plans for the Laurel House and inquire about specific items that were unresolved. The gathering proved to be incredibly informative and influenced some of the thinking for the design of the program.

## SUMMARY OF UPDATES

The Program has been updated to reflect the input and comments received during the outreach process. The following list includes the Program's significant updates and remaining questions for the Subcommittee to consider.

1. The naming of the program, site, and individual artist residency programs is yet to

be finalized. If the house is renamed, for example as the Elsie Weisman House, staff recommends the following titles for the program and artist residency programs:

- Laurel Avenue Artist Residency Program for the entire program.
  - Elsie Weisman Artist Fellowship (Artist Fellowship) for the Live/Work residency program in the house.
  - Laurel Avenue Artist Studios (Artist Studios) for the day-use studios in the back of the property.
2. Additional information was added to the History of the Property section to provide more context.
  3. The general use of the individual spaces and access at the Laurel House and Park site, Main House, Chauffer’s Cottage, Garages, and Performance Space has been further defined.
  4. The Artist Fellowship and Artist Studios opportunities have been further defined, the terms of the residencies have been updated, the artist selection process has been refined. The following table illustrates the structure of the Program.

| Laurel Avenue Artist Residency Program (Program)    |   |
|---|---|
| Elsie Weisman Artist Fellowship (Artist Fellowship) | Laurel Avenue Artist Studios (Artist Studios)                           |
| Visiting artists who Live/Work in the House         | West Hollywood resident artists who utilize the subsidized studio space |

5. Artist’s eligibility for the Program, Artist Fellowship, and Artist Studios has been further refined. Staff recommends focusing the artist selection on artists that are most desirable for their overall work and profile, and allow for additional requests, such as an additional non-participant adult, pets, and/or children, to be considered on a case-by-case basis. For a long-term residency, this approach ensures

maximum equity and diversity as well as the probability for the best artists applying for the program. Case studies including the Roswell Artist-in-Residence Program and Galveston Artist Residency have show that this method works well.

6. The Subcommittee may consider designating one of the Artist Studio spaces as a shared facility and/or workshop space with planned events.
7. The Review Process section has been refined to incorporate an Advisory Panel to provide input in defining the artistic guidelines, evaluation criteria for the artist selection process, and review of artist applications.
8. The Staffing section has been updated to clarify that staff will oversee all production and consultants required for the Program, such as contract positions, guest curators, independent review panelists, advisors, and the Program Administrator.
9. The Partnerships section has been expanded to include a path for a nonprofit arts organization to partner with an artist's application. A partnership will extend the awareness of the artist residency opportunity and support the presentation and development of artists and content from under-represented communities and disciplines.
10. A new section at the end of the document includes some FAQ's for the Program with a list of anticipated questions the city will receive from applicants.

## BUDGET

The operating budget is still in development and will be finalized in the coming months.

The budget will include expenses for the following items:

- Personnel (Advisory Panel, Program Administrator, Facilities Supervisor, Chef, and an evaluation consultant)
- Artist Fellowships & Studios (monthly stipends for Artist Fellowships, 1x roundtrip travel expense for Artist Fellowships, materials allowance for new tools and equipment for Artist Fellows)
- Programming (exhibition expenses, events, professional development

opportunities, educators)

- Furnishings and Equipment (furnishings and linens for the live/work units in the house, worktable and chairs for the studios, basic kitchen ware, general office supplies)
- Marketing and Public Relations (online marketing, print marketing, printing, media events)
- City Archives (contract archivist, archive materials and equipment)
- Routine expenses (utilities, wifi, security, maintenance, property insurance, and appliances)

**ATTACHMENT:**

Attachment A – Laurel House Residency Program

Attachment B – Schematic plans for the Laurel House and Park

# Laurel House Artist Residency Program

## Overview

The Laurel Avenue Artist Residency Program (working title for the “Program”), located at 1343 N. Laurel Avenue, West Hollywood, will support artists and make a positive cultural difference in the lives of residents, workers, and guests of West Hollywood. The Program will consist of two distinct artist residency programs, the Elsie Weisman Artist Fellowship and the Laurel Avenue Artist Studios, that will run concurrently at the site. The Laurel House Artist Residency Program honors Elsie Weisman’s personal interest in hosting salons with dignitaries and culture makers. The Laurel House and Park will continue to be a place for public discourse about cultural production.

## History of the property

Built in 1914, the Laurel House is an excellent example of Colonial Revival architecture, and the only example in West Hollywood. The expansive property, a half block south of Sunset Boulevard, is lush with trees and shrubbery. It is an oasis among the densely packed apartment buildings that surround it. The property was donated to the city in 1997 by Elsie Weisman, with the stipulation that it be preserved as a park. Weisman grew up in the house and died in 2000 at the age of 101. Weisman hosted brilliant thinkers like Albert Einstein, Mahatma Gandhi, Buckminster Fuller and Eleanor Roosevelt at her in-home salon, a think tank she called the Modern Forum.

In 2010, the West Hollywood City Council directed staff to develop a plan to open the grounds at 1343 N. Laurel Avenue as open space on a temporary/interim basis for public use. In 2011, the city converted the front of the property into Laurel Park. From 2013-2014, the City conducted an extensive community visioning process for the Laurel property. The community expressed support for several potential uses during the visioning process and prioritized several factors, including access to more community gathering spaces, activation as an Arts and Cultural Center, maintenance and/or enhancements of the property's use for peacefulness and beauty, preservation of the house and gardens, activation through new features and programming, and continued use for dog walking.

In October 2022, the City Council confirmed that the Laurel House and Park should be used for arts and culture programs and directed staff to issue a Request for Proposals for a qualified architectural design firm to continue the programming and design process. The City Council also recommended that additional features of the renovation should include dedicated space for the city archives, gallery and exhibition space, studio maker space, and maintaining the grounds for public use. In April 2023, City Council approved an agreement with the architectural firm Page & Turnbull to complete a schematic design to renovate and convert the Laurel House and Park into public space, including an artist-in-residence component for a minimum of four artists.

The main house, four garages, chauffeur's cottage, and park space will undergo renovation in 2025-26.

## WeHo Arts: The Plan

The Program will actualize several recommendations outlined in the WeHo Arts: The Plan, a community-based cultural plan. The Plan is structured by 5 principles (Space, Engagement, Support, Visibility, and Experimentation) and 20 recommendations. The Program will provide a physical space for the arts, in their myriad forms, for creation and presentation. The Program will bring people together to create community through meaningful arts and culture engagements. And the Program will position the City of West Hollywood as a leader in the region, and perhaps the nation, in its support for artists in the presentation of compelling new work.

The Laurel House Residency Program will specifically address five (5) of the WeHo Arts: The Plan's recommendations, including:

- Improve and expand arts uses in existing City-owned facilities and open land. (Space, R1)
- Spearhead an initiative to address affordable housing and workspace needs for artists, arts organizations, and small creative businesses. (Space, R3)
- Foster community by bringing people of all ages together through meaningful, high quality, art-making experiences, with a focus on populations that are isolated or disconnected from the City's current arts programming. (Engagement, R6)
- Continue to convene people in structured, informal dialogue, and/or art making experiences in order to maintain relationships and understand community dynamics as they evolve over time. (Engagement, R8)
- Commit to a culture of experimentation and learning, which can support West Hollywood's electric atmosphere and place the arts at the center of conversations about the City's future. (Experimentation, R20)

## PROGRAM

The Laurel House and Park will be transformed into an arts and culture hub consisting of both public and private space. All arts and culture programming, and the City Archives, will be operated by the Arts Division. The park facilities will be enhanced, and it will remain open to the public. The public park hours will remain the same, dusk to dawn. The landscaping and facilities will be maintained by the City's Facilities and Field Services Division.

Main House, First Floor (mostly public space) - The first floor will include a series of gallery spaces, a large kitchen, an office, restrooms, and a green room. The gallery spaces will be programmed with arts and culture events such as panel discussions, performances, and exhibitions. A portion of the gallery space will be dedicated to exhibiting work related to the City's History and/or history of the house. The kitchen will be used primarily by the residents of the house but will also be available for catering during events. An office will be made available for the Program Administrator. The restrooms will be accessible when the house is open to the public. And a green room will provide a space for performers to prepare for events. An elevator will be added to provide accessible access from the basement to the second floor.

Main House, Artist Residences, Second Floor (private space) - The second floor of the house will include four live/work units and a shared laundry room for artist residents. Each unit is a one-bedroom

apartment with a bathroom, designated bedroom, and designated workspace. One unit includes two bedrooms and an accessible bathroom. The second floor will only be accessible by artist residents and staff.

Main House, Basement (private space) - The basement will include space for storage and a work room for artist residents who need to work in a dark space, such as a filmmaker or digital artist, or require a soundproof room, such as a musician or composer. The basement will only be accessible to artist residents and staff.

Chauffeur's Cottage (public/private space) - The chauffeur's cottage will be transformed into the City Archives. The front of the cottage will include two modest reading rooms. The back of the cottage will include an office, restroom, storage, and a climate-controlled room for the archives. The public will be able to access the reading room space by appointment to meet with the archivist to view archive materials.

Garages, Artist's Studios (public/private space) - The garages will be converted into four day-use artist studios and a shared accessible restroom.

Performance space (public space) - A new outdoor performance space will be added between the main house and the garages. The space will be able to accommodate small-scale events organized by the Program Administrator, such as chamber music or poetry readings, with an audience capacity of about 80 people. Performers will have access to the green room in the Main House during events. The public will have access to the restrooms in the Main House and/or shared garage restroom during events. A detached storage shed for event supplies and chairs will be added to the site, south of the Garages.

Two artist residency programs, the Elsie Weisman Artist Fellowship (Artist Fellowship) and Laurel Avenue Artist Studios (Artist Studios), will run concurrently at the site. US-based interdisciplinary artists, selected for the Artist Fellowship, will reside in the main house. West Hollywood resident artists selected for the Artist Studios will have access to subsidized studio space (converted garages). The interlacing of Work and Live/Work residences will set up channels for local, national, and international connections. All artists are expected to engage with community members, which may include regular open studio hours, public presentations and exhibitions, and workshops. All Artist Fellowships will be an 11-month term. All Artist Studio residences will be for a 2-year term. There will be a one-month transition period between each residency cohort to allow for maintenance, purchase of new supplies (if necessary), etc.

#### Laurel House Artist Residency Goals

- Serve as a cultural hub for the City of West Hollywood as a dynamic and accessible cultural destination for the community.
- Serve a diverse artist community and offer opportunities for artistic development and collaboration in the creation of new work.
- Ensure the representation of a wide range of artistic disciplines, as well as diverse cultural and aesthetic approaches.



- Support the resident (local) arts and culture community with the intrinsic value of affordable space.
- Foster active engagement and visibility with the West Hollywood community.
- Continue to increase the prestigious and competitive reputation of the program.
- Ensure that the program is accessible, open, inclusive, equitable, and responsive to the community’s need for affordable space.

**Laurel House Artist Residency Program Artist Eligibility (applies to all applicants)**

- Applicants must be at least 25 years old.
- Evidence of 3-years of professional practice as an artist.
- Teams are welcome to apply, however only one unit will be made available per approved application.
- Applicants at any stage of their career are welcome to apply.
- Artist Fellowship and Artist Studios will have additional specific criteria.

| Laurel Avenue Artist Residency Program (Program)       |   |
|--|---|
| Elsie Weisman Artist Fellowship<br>(Artist Fellowship) | Laurel Avenue Artist Studios<br>(Artist Studios)                        |
| Visiting artists who Live/Work in the House            | West Hollywood resident artists who utilize the subsidized studio space |

**ELSIE WEISMAN ARTIST FELLOWSHIP (working title) - 4 artists**

The Artist Fellowship is a funded artist opportunity designed to allow an artist to focus on professional and artistic development while immersed in a neighborhood of the City of West Hollywood. During the Artist Fellowship, artists are invited to research for an upcoming project, develop and present a new project, or use the time to explore an innovative technique that will further the artist’s individual practice.

The program will bring in a diverse group of artists working in a range of disciplines, including, but not limited to, visual art, dance, design, music, writing, filmmaking, performance, new genres, community-based art, social practice, and environmental-based art practices. Each cohort of artists promises an inspiring and surprising series of artistic intersections, revelations, and expansions.

Artists will live and work in the four apartments in the Laurel House, for a term of 11-months. A public program will accompany the residency and may include activities such as artist-organized programs, open studios, lectures, exhibitions, and performances.

The city will provide Artist Fellows with the following (subject to final approval of operating budget):

- A monthly stipend

- A one-time travel honorarium to go to and from the site.
- A “family dinner” prepared by a chef 1x per week
- A queen size bed, linens, dresser, worktable and chair in each live/work space
- Basic kitchen supplies in the shared kitchen
- WiFi
- Shared laundry unit in the house
- A residential parking permit (if necessary)
- The city will coordinate professional development and personal networking opportunities for Fellows.
- The city will plan a hosted meal for Fellows and invited guests 1-2 times a year.
- All other provisions must be provided by the artist.
- Funding to purchase tools or equipment that may be required to produce the Fellow’s artwork may be requested. All tools and equipment purchased by the allowance will remain at the Laurel House, as property of the City, for use by future Fellows.

#### Goals for the Elsie Weisman Artist Fellowship

- Provide dedicated space, time, and resources to artists for incubation, thought or creativity, and work.
- Support the creative process of art making by providing artists with the conditions to live and work concurrently while advancing their own artistic practice.
- Select artists representing a wide variety of aesthetic viewpoints, racial and ethnic backgrounds, cultures, disability perspectives, and/or geographic areas.
- Support artists to develop bold new work.

#### Elsie Weisman Artist Fellowship Eligibility

The Artist Fellowship welcomes any art practice, including but not limited to visual art, dance, design, music, writing, filmmaking, performance, new genres, community-based art, social practice, and environmental-based art practices. Diverse artistic points of view will be sought. Artists at any stage of their career may apply.

#### Artist selection criteria:

- Quality of portfolio: A professional body of excellent work with examples of achievements
- Strength of proposal for the residency period: Why is it important to do the work in West Hollywood and Los Angeles County? Why is the proposed work important to the artist’s practice at this time?
- Potential for community enrichment: The promise of contributing to the aesthetic life of neighbors, artists, institutions, and/or publics.
- Relevance of art practice to contemporary urgencies: Why does this work matter now?

## LAUREL AVENUE ARTIST STUDIOS (working title) - 3-4 Local Artists

Laurel Avenue Artist Studio space will be provided to 3-4 local, West Hollywood residents, artists for a two-year period. The primary use of the Artist Studio space is for the creation of new work. The Artist Studios will have defined working hours from 8:00 a.m. - 10:00 p.m. Those artists who meet the minimum qualifications defined by the Arts and Cultural Affairs Commission will be eligible for the subsidized studio space. Staff will review applications according to the defined criteria to qualify artists. Qualified artists will be included in a pool of eligible artists for 2-cycles. Qualified artists will be selected by lottery on a bi-annual basis. Artists who are in good standing with their studio agreement with the city are also eligible to submit their qualifications into the lottery for a second term in the Artist Studios.

One studio space could be a shared facility and/or workshop space with planned events. An example of a shared workshop space could resemble a fashion workshop, outfitted with worktables, sewing machines, clothes racks, dress form, etc. to support the Drag Artist community. Another example of a shared workshop space could resemble a ceramics studio with a kiln, worktables, drying racks, etc. to meet the requests made by the community during the outreach process. There will be no storage in the shared space. The Program Administrator will program the space according to its designated use. Alternative uses for the shared space will be determined by the Arts and Cultural Affairs Commission.

The city will provide Laurel Avenue Artist Studios with the following (subject to operating budget approval):

- Subsidized rent for the Artist Studio
- A “family dinner” prepared by a chef 1x per week
- WiFi
- Access to a shared gender-neutral restroom
- A work sink, worktable, and 2 chairs in every studio.
- All other materials must be provided by the artist.

### Goals for the Laurel Avenue Artist Studios

- Provide dedicated studio space at an affordable price for West Hollywood artists.
- Foster relationship building and networking between artists.
- Support artists to develop bold new work.

### Laurel Avenue Artist Studios Eligibility Criteria

- Applicants must reside in the City of West Hollywood.
- Artist’s Statement that describes professional experience, background, goals, and potential for community enrichment in their art practice.
- Evidence of a professional portfolio: Applicants must present a portfolio/body of work that exemplifies the type of work the applicant will create in the studio.

## REVIEW PROCESS

The City's Cultural Equity Statement, creativity, and critical thinking will guide all processes.

The City of West Hollywood will host two open calls for the Programs – Artist Fellowship and Artist Studios. All applications will be reviewed by staff to confirm that the applicant meets the minimum qualifications. Staff will forward all qualified applications for the Artist Fellowship to the Advisory Panel for review. The applications will be reviewed with recommendations made after each review. The process will start with the Advisory Panel, then Performing Arts and Cultural Affairs Subcommittee, and finally the Arts and Cultural Affairs Commission. All qualified applications for Artist Studios will be entered into a lottery.

### Advisory Panel

The rich ecosystem of cultural, artistic, and educational activity in Los Angeles County will be tapped at all levels to create an advisory panel for the Program with a goal to find the right balance between neighborhood voices and artistic voices, making the program accessible as well as artistically rigorous.

The advisory panel will serve a 3-year term to provide input in defining artistic guidelines, evaluation criteria for the artist selection process, review of artist applications, term of the Artist Fellowship and Artist Studios, and recommendations for Artist Fellows. The advisory panel may elect to define a theme to the call to artists to which applicants respond.

The panel will consist of eight individuals to include the Program Administrator, one Arts Commissioner, one resident from West Hollywood (ideally someone who lives in a close vicinity of the property), arts administrators, artists/performers, curators, and arts professionals, representing a wide variety of artistic mediums such as, but not limited to, visual art, dance, design, music, writing, film-making, performance, new genres, community-based art, social practice, and environmental-based art practices. Staff and the Program Administrator will facilitate the Advisory Panel.

The Arts and Cultural Affairs Commission will be the decision-making body for approving the artistic guidelines, evaluation criteria, term of the Artist Fellowship and Artist Studios, and final selection of artists for the Laurel House Artist Residency Program, with its Performing Arts and Cultural Affairs (PACA) Subcommittee making recommendations based on recommendations from the advisory panel.

## STAFFING

City staff will oversee all production and consultants required for the Program, such as contract positions, guest curators, independent review panelists, advisors, and the Program Administrator.

### Program Administrator

The city will contract with a Program Administrator with artistic vision, cultural competency, and deep knowledge of the Los Angeles arts and culture scene. Duties will include acting as the primary liaison between the city and the artists, organizing public programs, mounting exhibitions, problem-solving, organizing site visits from arts professionals (tailored to the artists' needs) for professional development,

and facilitating meaningful engagement with neighbors. The Program Administrator will be encouraged to provide creative influence on the Program, run all practical and philosophical aspects of the Artist Fellowship and Laurel Avenue Artist Studios, and execute the public programming.

#### Cultural Facility Supervisor

A dedicated facility staff person or contractor (or two) is required. This person is an all-around handyperson, knowledgeable about the cultural facility and park grounds, and available to be always on call (24/7) in case of facilities disruption - plumbing, electricity, wifi, etc.

## **PARTNERSHIPS**

#### Nonprofit Arts Organizations

Affordable housing for artists is a significant struggle in the Los Angeles region. The city will develop relationships with art and cultural spaces both large and small. Large art and cultural spaces could include established arts institutions, art schools and universities in the region. Small art and cultural spaces could include non-profit arts organizations and artist-run initiatives.

A partnership with a nonprofit arts organization will extend the awareness of the artist residency opportunity and support the presentation and development of artists and content from under-represented communities and disciplines. An Artist Fellowship could result from a partnership with an independent nonprofit arts organization whose mission aligns with the Program goals. Eligible organizations are those who regularly host artist projects and residencies but are lacking artist housing. It is recommended to introduce one partnership per year, and it is not required to take place every year.

It is expected that a nonprofit arts organization who intends to partner on an artist's application will contact the city in advance to confirm eligibility. If the partnership artist is selected, the nonprofit arts organization is required to match funds to support the artist's monthly stipend. A sliding scale match, depending on the size of the partnering institution, is recommended. All other aspects of the Artist Fellowship will remain the same. The partnership Artist Fellow will live/work at the property and simultaneously support the goals of the Program and the sponsoring nonprofit arts organization.

## **PUBLIC RELATIONS**

The Program will require a public relations consultant to provide services for the first 3-cycles (3-years), at a minimum. The Program's founding network of colleagues and institutions will be a key asset in promoting its launch, new life, and possible futures, as professional word of mouth is one of the most powerful promotional tools. Additionally, targeted outreach to outlets such as E-Flux, Hyperallergic, ArtNews, Artist Communities Alliance and others will be engaged. Social media will be key to any public relations campaign and print material will be distributed locally.

## BUDGET

The operating budget's personnel costs include panelists and advisors, a full-time program administrator on contract; two part-time facilities supervisors, a chef that cooks weekly for Artist Fellows; and an evaluation consultant to develop measurements and tracking.

The Artist Studios and Artist Fellowships budget includes stipends to assist Artist Fellows with living expenses, such as health insurance, materials, food, and transportation; and a one-time travel honorarium for Artist Fellows to and from the site. The programming budget includes expenses for temporary exhibitions, resident critiques and discussions, and open studios, as well as costs related to networking and building community with artistic and institutional partners.

The budget for furnishings and equipment includes kitchenware, linens, and bedding for each unit; kitchenware for the communal kitchen; and other requests formally submitted by artists, with the understanding that all tools and equipment purchased by the city will remain at the house for use by future resident artists.

The PR and marketing budget includes electronic and print mail outreach. And, anticipated routine costs will include utilities, internet/WiFi, security, maintenance, property insurance, all furniture and fixtures, and kitchen and laundry appliances.

Revenue Streams: For a sustainable program, the bulk of the funding should come from the City of West Hollywood taxes or other revenue. A percentage could come from other government sources such as Federal, State, and County agencies. Additional funding could come from local partners, such as those connected to Artist Fellows or other specific programming. Specific program funding could come from various arts or community engagement grants such as the National Endowment for the Arts, The Warhol Foundation, the California Arts Council, and the California Community Foundation. Most funders will fund specific programs. Grant applications are stronger when the budget shows that operational funding is covered by the city.

## FUTURE PROGRAMMING

As the Artist Residency matures, new layers of programming can be developed and layered in. It is recommended that these programs be considered in years 5 or 7. For example:

### Embedded Government Art Worker

An artist works within the City of West Hollywood on a project defined by the city or by the artist. It gives everyone the opportunity to learn and look at their own work anew. Constituents benefit from a different

voice in their government. West Hollywood joins a small but growing community of government-embedded artist residences.

### Global Exchange

A topic targeting local problems and international commonalities is addressed. Artists and thinkers from across the world are invited to work individually and collectively on shared concerns. The ideas exchanged and developed could play a significant role in addressing urgent issues that are global in scale, local in effect.

### Affordable Housing Pipeline

This approach incubates artist citizens through the stabilization of home, providing facilities for artists and a pathway to stable housing. Eligibility is geared toward residents of Los Angeles County / Southern California. West Hollywood finds a way to address the housing crisis while supporting a swell of creativity and diversity in the city.

### FAQ's for the Program

- How long are Artist Fellow's expected to be on-site?
  - Artist Fellows are expected to live/work on-site for most of the year. Fellows should not be absent for more than 3 weeks. We understand that life situations may arise without warning, and we will work with individuals to the best of our ability to accommodate their needs.
  
- How many public engagement events are expected from artists in the Program?
  - All artists are expected to participate in all open studios (2-4x/year), and provide one lecture, performance, and/or workshop for the community.
  
- Are non-participant significant others allowed?
  - All requests will be considered on a case-by-case basis.
  
- Are Pets allowed in the Program?
  - All requests will be considered on a case-by-case basis.
  
- Are children allowed?
  - Currently there is no funding for childcare services.
  - Artist Fellowship applicants with children will be considered on a case-by-case basis.
  
- Is there parking at the site?
  - There is no onsite parking provided. The site is surrounded by residential permit parking, 2-hour limit. A parking garage is located about ½ block away at the corner of Sunset Blvd. and Laurel Avenue. TBD: Artist Fellows will receive a residential parking permit (if requested).

- What are the working hours for the Artist Studios?
  - The site is in a residential zone. For this reason, the Artist Studio hours are defined as 8:00 a.m. - 10:00 p.m. No noise shall be made by any stereo, television, musical instrument, or similar device that is plainly audible from 25-feet or more outside of these hours.

## Timeline of Major Activities

*Year Zero* (to occur the year prior to anticipated opening, tentative 2024)

Finalize mission statement and all foundational texts related to residency programs

Draft the contracts for both kinds of artist residencies

Publicly introduce the program

Call for applications for the first cohort

Assemble Selection Panel

Make Selection

Communicate to artists and the public about the program

Execute artist contracts

Furnish and supply apartments for incoming artists

*Year One*

Usher in the first cohort

Support the artists in finding their way into and through the residency

Allocate resources for on-site arts and culture programming

Assess the program to date

*Year Two*

Process previous year

Support the artists in finding their way through the residency and conclude projects

Allocate resources for on-site arts and culture programming

Assess the program to date, revise as necessary

Design the next call and cohort

Call for second cohort applications

Assemble Selection Panel

Make Selection

Execute artist contracts

Communicate to artists and the public about the program

*Year Three*

Usher in the second cohort

Support the artists in finding their way into and through the residency

Allocate resources for on-site arts and culture programming



Assess the program to date, revise as necessary

*Year Four*

Process previous year

Support the artists in finding their way into and through the residency

Allocate resources for on-site arts and culture programming

Assess the program to date, revise as necessary

Design the next call and cohort

Call for third cohort applications

Assemble Selection Panel

Make Selection

Communicate to artists and the public about the program

# Park



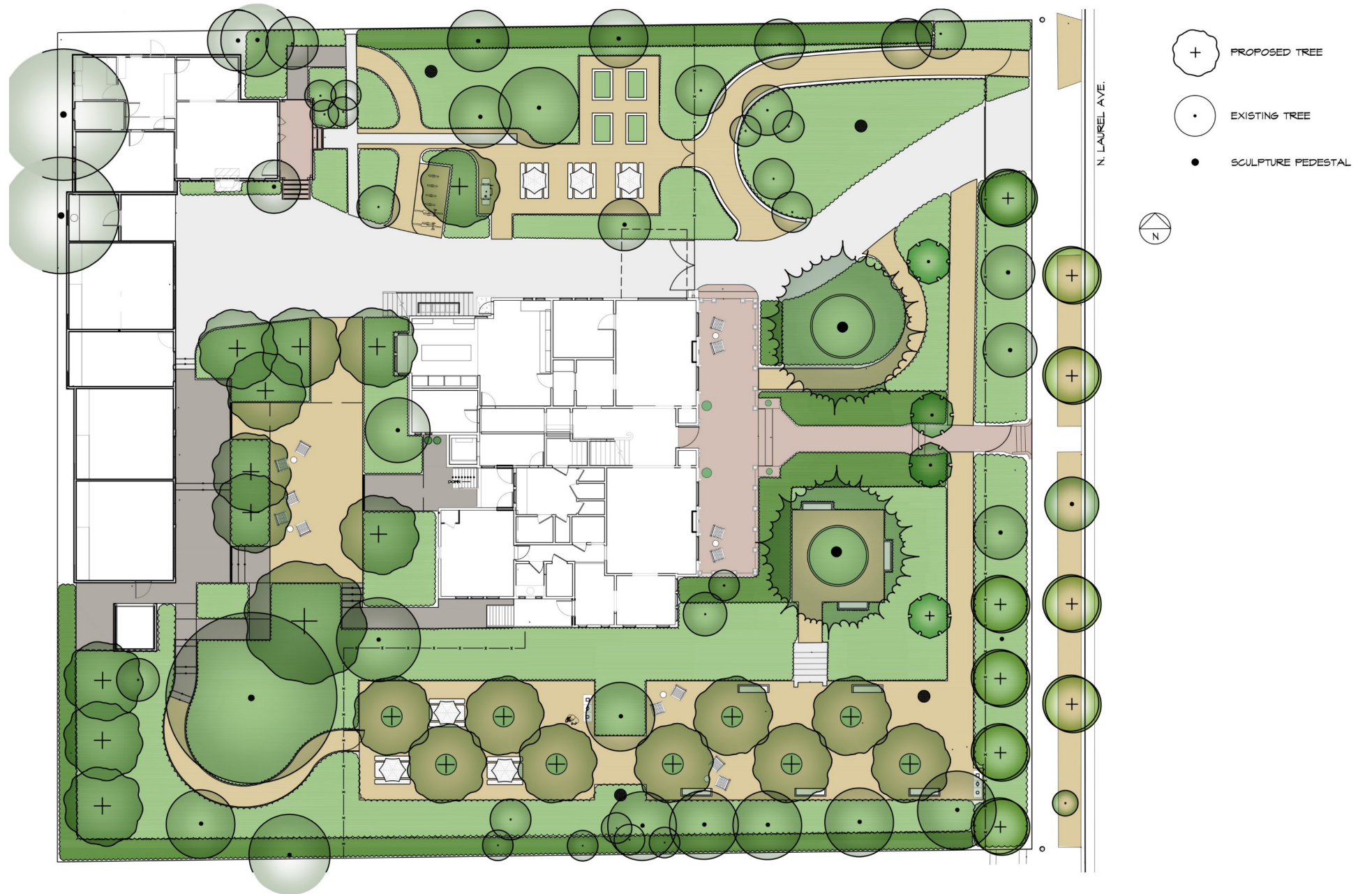
STRUCTURAL  
FOCUS

LGLA

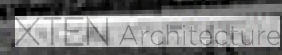
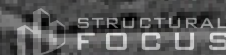
XIEN Architecture



# Laurel Park



# Main House



# Main House Elevation



# Main House First Floor



## Areas Legend

- Circulation
- Gallery
- Green Room
- Kitchen/Dining
- Office
- Restroom
- Storage

# Main House First Floor



# Main House Second Floor



## Areas Legend

- Circulation
- Kitchen/Dining
- Laundry
- Residence
- Restroom



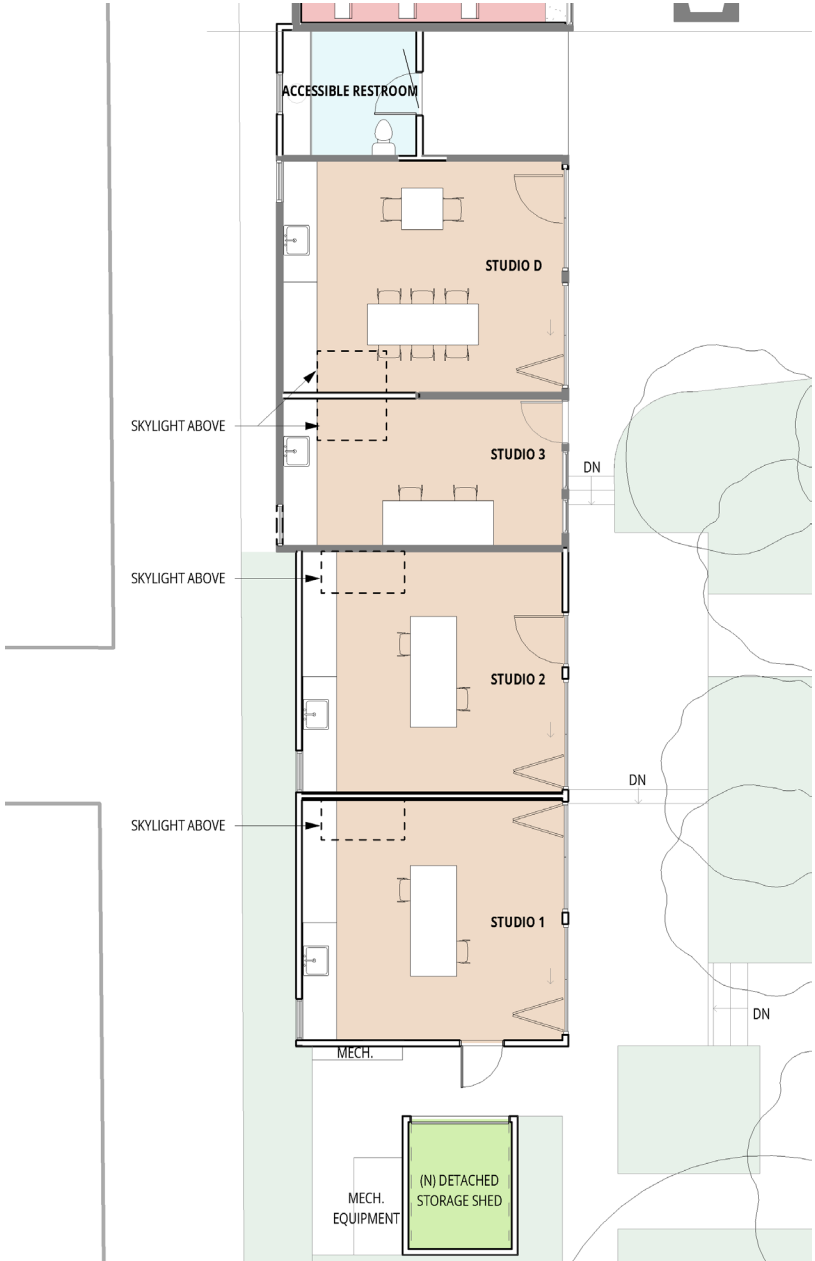
# Servant's Quarters and Garage



# Garage Studios



# Garage Studios



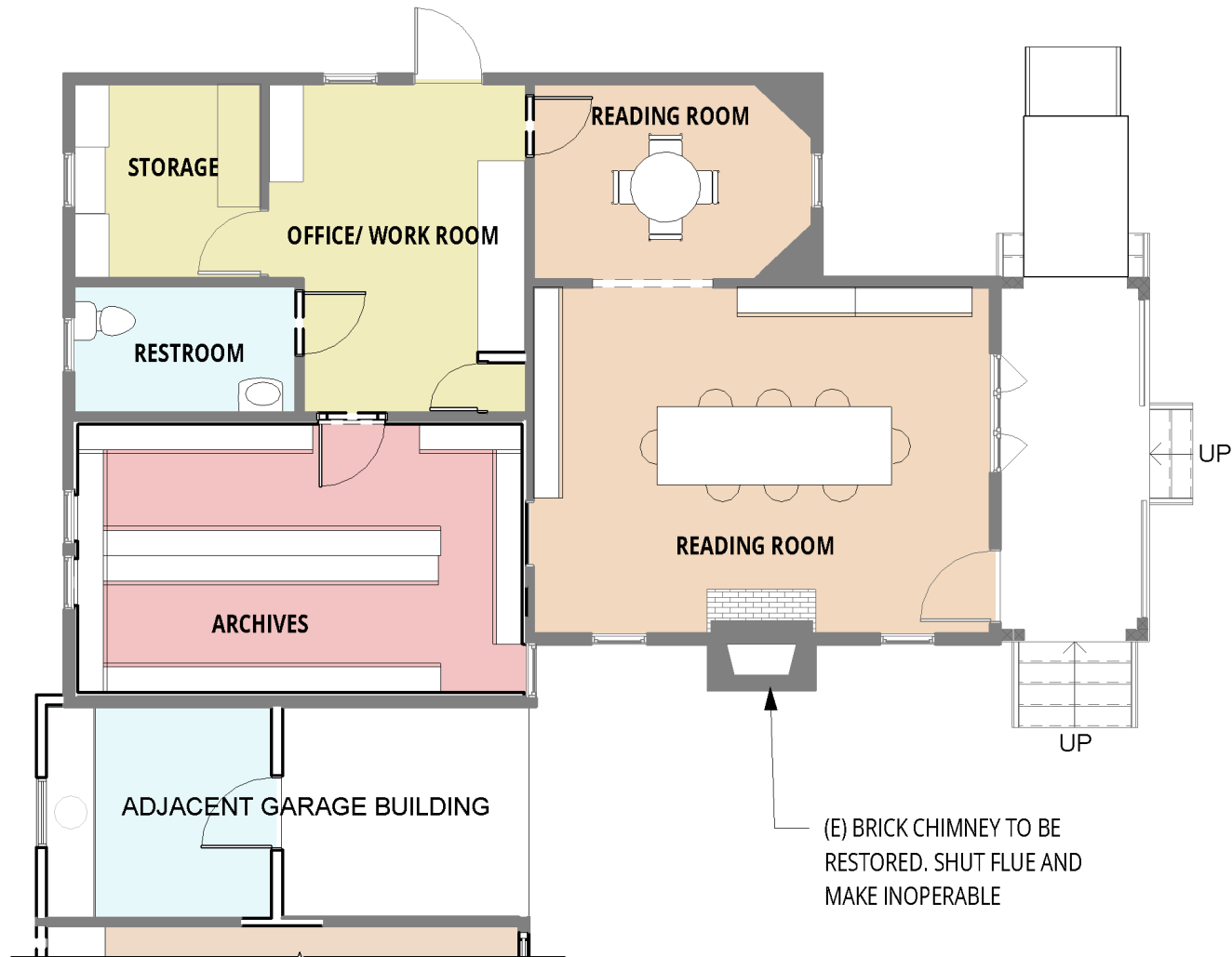
## Areas Legend

- Archives
- Restroom
- Storage
- Studios

# Chauffeur's Cottage



# Cottage Archives



## Areas Legend

-  Admin
-  Archives
-  Reading
-  Restroom
-  Studio

# Laurel Park – Performance Space

