

Solid Waste Planning: Space Allocation Guidelines

Below are some general guidelines to assist in solid waste planning for new development projects.

Note: Athens Services provides hauling services and the data provided here is based on general assumptions. There are numerous factors that can impact the assumptions provided, such as the volume of waste generated, bin, cart or compactor size, frequency of service, etc. It is recommended that Athens provide review of proposed waste plans prior to the City granting approval.

To properly determine the space needed for solid waste storage, it is important to understand how much solid waste the site (residential or commercial) is generating.

Residential Service

For planning purposes, standard service for residential (1-4 units), will be cart service. Proper space will need to be allocated for a minimum of 3 carts per unit.

Residential Type	Total Waste Weekly (cubic yards)	Equipment	Collection Frequency
Residential (1- 4 units) Cart Service	1 yd ³	1 Qty. 64 Gallon Trash Cart 1 Qty. 64 Gallon Recycle Cart 1 Qty. 64 Gallon Green/Organics Cart	1/Week

**Note that customers may order different cart sizes, and increase quantities, based on their individual needs.*

Standard service for residential (5 units for more) should include one trash (3 yd³), one recycle (3 yd³), and one organics bin (2 yd³). Under this assumption, a total of 18 yd³ of trash, 18 yd³ of recycle, and 12 yd³ of organics waste can be collected each week.

Residential Type	Total Waste Weekly (yd ³)	Equipment	Collection Frequency
1-25 Units	Up to 18 yd ³ (trash) Up to 18 yd ³ (recycle) Up to 12 yd ³ (organics)	1 Qty. 3 Yard Bin (Trash) 1 Qty. 3 Yard Bin (Recycle) 1 Qty. 2 Yard Bin (Organics)	Up to 6 Days/Week
26-49 Units	Up to 36 yd ³ (trash) Up to 36 yd ³ (recycle) Up to 24 yd ³ (organics)	2 Qty. 3 Yard Bin (Trash) 2 Qty. 3 Yard Bin (Recycle) 2 Qty. 2 Yard Bin (Organics)	Up to 6 Days/Week
50 Units & Over	Over 30 yd ³	Compactor Service*	TBD

** There are various types of compactors available, depending on the project design. See attached compactor information for more details.*

Commercial Service

Below are some general guidelines for commercial service.

Commercial Type	Total Waste Weekly (yd ³)	Equipment	Collection Frequency
Up to 10,000 sf	Up to 18 yd ³ (trash) Up to 18 yd ³ (recycle) Up to 12 yd ³ (organics)	1 Qty. 3 Yard Bin (Trash) 1 Qty. 3 Yard Bin (Recycle) 1 Qty. 2 Yard Bin (Organics)	Up to 6 Days/Week

Solid Waste Planning: Space Allocation Guidelines

For buildings over 10,000 square feet, see some typical uses are listed below. These are general guidelines to assist in forecasting solid waste generation. Projects should be evaluated individually in conjunction with Athens Services to determine accurate service level.

Business Type	Total Waste Weekly (yd ³)	Business Type	Total Waste Weekly (yd ³)
Warehouse/Supermarket/ Department Store Per 10,000 sq. ft.	48 yd ³	Hotel w/Restaurant (Per 25 rooms)	9 yd ³
Office Building Per 1,000 sq. ft.	3 yd ³	Schools (with Cafeteria) Per 450 Students	15 yd ³
Shopping Center (No restaurants) Per 1,000 sf	9 yd ³	Restaurant - Sit Down (Per 80 seats)	36 yd ³
Retail (No restaurants) Per 1,000 sf	9 yd ³	Restaurant - Fast Food	9 yd ³
Hospital/Nursing Home (Per 10 beds)	6 yd ³	Drug Store	9 yd ³

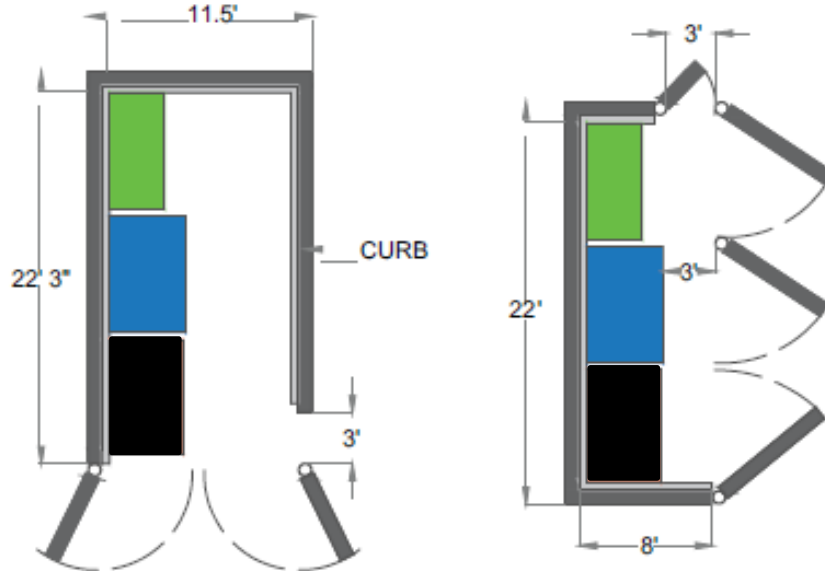
Container Specifications

Container	Width	Depth	Height	Equivalent Containers	Notes
32 Gallon	20"	23"	39"	N/A	N/A
64 Gallon	37"	28"	41"	2 Qty. 32 Gallon Carts	N/A
96 Gallon	29"	34"	45"	3 Qty. 32 Gallon Carts	N/A
1 yd ³	72"	24"	28"	3 Qty. 64 Gallon Carts	N/A
1.5 yd ³	72"	29.5"	34.5"	3 Qty. 96 gal carts	N/A
2 yd ³	72"	34.5"	41.5"	4 Qty. 96 gal carts	N/A
3 yd ³	72"	41.5"	50.5"	6 Qty. 96 gal carts	N/A
4 yd ³	72"	50.5"	57"	8 Qty. 96 gal carts	Not available for Organics
3 yd ³ Compactor	74"	45"	51"	N/A	N/A

Optional: Bin with caster, add 8" to height.

Sample Enclosure Options

Below are some samples of trash enclosures for bin service. Each image includes two 3 yd³ dumpster and one 2 yd³ dumpster. These are just examples and are not to scale and will require engineer/architect design. Each enclosure design will need to be evaluated by Athens Services on a per project basis.



- TRASH
- RECYCLING
- GREENWASTE/ORGANICS

Suggested Material for Path of Travel

Clean, smooth concrete should be used on path of travel for movement of bins from enclosure. Do not use material such as brick or decorative concrete.

Required Clearances for Path of Travel and Subterranean Enclosures

Clearance along path of travel should allow for at least 6' of clearance for bin(s) to be moved from enclosure. From the enclosure to the street shall be no longer than 30' for Valet Service.

For subterranean enclosures, 22' of vertical clearance is required for vehicle to enter and bin to be dumped.

Compactor Service

Size and type of the compactor vary from each account and customer need, but some standard size compactors are provided in the attached documentation. The type of compactor used will also determine which type of truck will be used to haul. Contact Athens Service in the planning stage and before installing compacting units.



RJ-88SC Compactor and RJ-88SC-HT Compactor

The RJ-88 Self-Contained Compactor is the ideal compaction equipment for waste with high liquid content...



RJ-250SC and RJ-250SC-HT Compactors

Our RJ-250 units are state-of-the-art in roll-off self-contained compactors, featuring over-sized feed openings and expanded container storage capacity...

For more information, visit <https://wessconw.com/all-compactors/self-contained-compactors/>



PRODUCTS REMANUFACTURED INDUSTRIES PARTS TRAINING SUPPORT MEDIA CONTACT

SELF-CONTAINED COMPACTORS

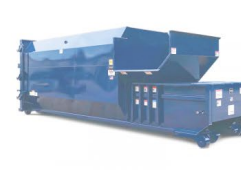
Marathon® Self-Contained Trash Compactors are the most widely used wet-waste trash compactors in the industry. Self-Contained Trash Compactors are the perfect choice for grocery stores, hospitals, restaurants, universities, stadiums, and more.



SC2 SELF-CONTAINED TRASH COMPACTOR



RJ-250SC SELF-CONTAINED COMPACTOR



RJ-100SC SELF-CONTAINED COMPACTOR

For more information, visit <https://www.marathonequipment.com/product-type/self-contained-compactors/>