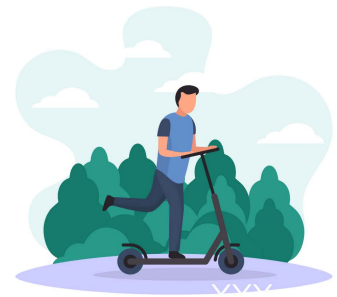
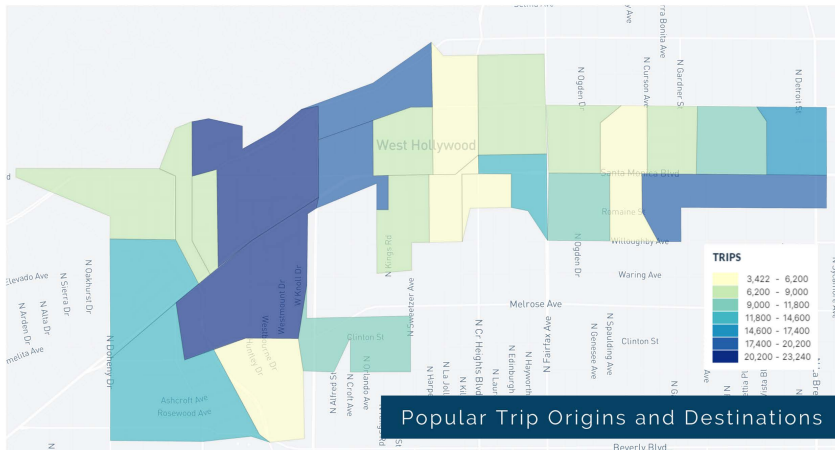


DOCKLESS MOBILITY PILOT PROGRAM

YEARLY REPORT 2022

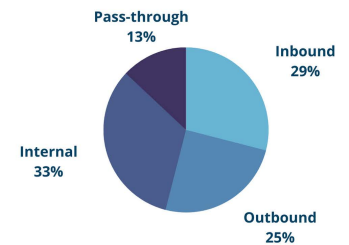


TRAVEL PATTERNS



The map shown on the left, indicates the most popular areas for trip origins and destinations in the City (darkest blue). This data informs staff on where frequently used parking corrals are/should be located, as well as the locations of most traveled neighborhoods and street corridors.

Route Types



	Jan	Feb	Mar	Apr	May	Jun	Jul	Aug	Sept	Oct	Nov	Dec	Total
Total Trips	13,552	14,701	16,921	18,513	23,170	22,194	24,526	25,404	24,265	27,814	19,641	14,694	245,438
Average Daily Trips	437	525	564	597	747	716	766	794	783	897	655	474	893
Relocated Scooters	411	371	379	281	262	253	358	366	199	239	222	241	3,582

*Relocated scooters are scooters that had to be moved to a designated dockless mobility parking station and/or location.

2022 IN A SNAPSHOT



Total Trips Duration
3,149,059 mins



Total Trip Distance
341.733 miles

Average Trip Duration
12 mins 49 secs

Average Trip Distance
1.42 miles

- Spring 2022 mark the beginning of **sidewalk detection technology** testing
- On July, 2022 **e-bikes were introduced**
- Staff attended or participated in a total of **9 Dockless Mobility Events** in 2022
- In 2022, staff conducted **2 surveys** to better understand impact of dockless mobility in the City
- From survey responses, **74% of riders and non-riders supported** the program

CLIMATE ACTION

CO2 Savings

- The Dockless Mobility Program is estimates to have saved approximately **138.06 metric tons of CO2 emissions**
- That is the equivalent of removing **30 average passenger vehicles from the road in a year**



Source: U.S. EPA