

WEST HOLLYWOOD

COMMERCIAL RECYCLING AND WASTE COLLECTION GUIDE

ATHENS SERVICES



Athens Services

AthensServices.com



WELCOME TO ATHENS SERVICES

The City of West Hollywood and Athens Services have partnered to provide enhanced waste, recycling, and organics services to your community. At Athens Services, we value each and every customer. We are committed to providing proactive, high quality collection services to the businesses of West Hollywood. The following guidelines and program details are provided to ensure that you receive the full benefit of your recycling and solid waste management services.

GENERAL INFORMATION

ATHENS SERVICES

14048 E. Valley Blvd., City of Industry, CA 91746

P.O. Box 60009, City of Industry, CA 91716

Phone: (888) 336-6100

Fax: (626) 709-5601

www.AthensServices.com

CUSTOMER CARE CENTER:

7:00 a.m. – 5:00 p.m. (Monday – Friday)

7:00 a.m. – Noon (Saturday)

COLLECTION HOURS:

7:00 a.m. – 5:00 p.m.

CUSTOMER SERVICE & INQUIRIES

SERVICE REQUESTS & QUESTIONS

For all service requests, please call (888) 336-1000 or visit AthensServices.com.

- Pay your bill and sign up for paperless billing
- Chat with a Customer Care Rep
- Schedule the pickup of a bulky item
- Order a temporary bin or roll-off

BILLING INQUIRIES

To make a payment or for questions regarding billing, please contact Athens Services at (888) 336-6100 or visit Billing.AthensServices.com.

HOLIDAYS OBSERVED

Athens Services observes the following holidays:

New Year's Day (January 1st)

Memorial Day (last Monday in May)

Independence Day (July 4th)

Labor Day (first Monday in September)

Thanksgiving Day (fourth Thursday in November)

Christmas Day (December 25th)

If the holiday falls on Monday - Saturday, collection services for the remainder of the week will be delayed one day. If the holiday falls on Sunday, there will be no delay in service.

RECYCLING, WASTE, AND ORGANICS COLLECTION SERVICES

The recycling, trash, and organics collection program consists of bins and carts for businesses. Commercial businesses may subscribe to source-separated recycling and organics collection. Charges for service vary depending on the size and type of container and frequency of collection. Athens Services encourages commercial customers to source separate recyclables by placing them in a recycle bin or cart, rather than the trash bin. Not only does source separation help keep recyclable materials out of the landfill, but commercial customers who recycle may be able to decrease their trash service. **Recycling bins are free and unlimited to customers!**



RECYCLE



Bagged Shredded Paper, Flattened Cardboard, and Paper



Milk Cartons



Plastic Bottles and Cups, Take-out Container, Round Dairy Tubs, Milk Jugs



Ferrous Metals, Aluminum Cans, Foils, Metal Cans, Aluminum Pans



Glass Bottles and Jars

NO LIQUIDS OR FOOD

Remember to flatten cardboard boxes before placing in container.

X NO!



Food Waste



Chemicals



Batteries



FOAM

Foam



Yard Waste



Electronics



Sharp Objects



LANDFILL



Diapers



Coffee Cups and Lids



Juice Packs



FOAM

Foam



Cereal Bars



Broken Ceramics



Condiment Packages



Coffee Pods



Paper Cups, Lids, Straws



Chip Bags



Latex Gloves



Pet Waste



Gum Wrappers

NO RECYCLABLES OR GREEN WASTE

*Automobile parts, construction debris, and hazardous waste are **NOT ALLOWED** in your waste containers.*

X NO!



Batteries



Chemicals



Light Bulbs



Electronics



Sharp Objects



Paint



ORGANICS



✓ FOOD SCRAPS



Fruit Peels



Egg Shells



Cheese and Dairy



Fruits



Bones



Pizza



Coffee Filter

✓ FOOD-SOILED PAPER



Food-Stained Paper



Napkins



Containers



Pizza Containers



Paper Bags



Wooden Utensils



Paper Straws



Bowls

✓ FOOD-SOILED PAPER



Leaves



Grass Clippings



Tree Trimmings



Branches



Scrap Wood *No painted or treated wood. No larger than 4 inches in diameter and 4 feet in length.



Flowers

DO NOT PUT
PALM FRONDS OR
SUCCULENTS IN YOUR
ORGANICS CONTAINER.

*Reminder: Pet waste
should be placed in the
trash bin.*

✗ NO!



Plastics



Gloves



Pet Waste



Glass



Metal



Foam



Palm Fronds

WHAT GOES IN MY CONTAINER?

The following is a useful guide on how to properly dispose of common household waste.



Athens' "What Goes Where" interactive, online recycling guide features over 350 items and acts as the go-to resource for correctly disposing, reducing, reusing, recycling, and composting unwanted waste material. Check out the guide by visiting CanIRecycleMy.com or scanning the QR code.

BLUE CART = RECYCLING

If empty of liquid and food, the following is acceptable in your **blue recycling container.**

Plastic:

- Plastic #1 beverage bottles/ jugs (with cap) & to-go clamshells
- Plastic #2 & #5 detergent jugs & food containers

Paper: (clean, dry, and no metal or lamination), magazines, mail, office paper, newspaper, paper bags, & telephone books

Cardboard: broken down cardboard, corrugated fiberboard, & clean pizza boxes

Glass: bottles & jars only (remove lids)

Metals: aluminum cans, foil, & trays, scrap metal, steel cans & tin cans



GREEN CART = ORGANICS

Green Waste: branches; flowers; grass clippings; hedge trimmings; leaves; weeds; & untreated/unpainted lumber, slywood, & scrap wood.

Food Scraps: fruits; vegetables; bread; rice; pasta; cheese; dairy; coffee grounds; coffee filters; meat; bones; poultry; seafood; soft shells (e.g. lobster, crab, & shrimp)

Food-Soiled Paper:

*All items must be 100% plant-fiber based with NO petroleum based plastic, wax, or bio-plastic coating, liner, or laminate. Must be soiled **ONLY** with food or drink liquids.

- 100% fiber based, compostable to-go containers & servingware, egg cartons (paper), paper napkins & kitchen towels, plates, packaging, and pizza boxes



BLACK CART = LANDFILL

Glass: ceramic, porcelain, & non-food related glass

Food Containers: chip bags, compostable "plant-based plastic," juice pouches, paper coffee cups, snack bar wrappers, tea bags, & tea wrappers

Paper: bathroom & facial tissues, envelopes (padded and Tyvek), laminated or plastic coated paper, napkins, photographs, & receipts

Plastic: plastics #3 & #6 (hard & foam); all black plastics; bubble wrap; disposable gloves; garden hoses; empty motor oil containers; plastic bags & film (e.g. dry cleaning bags & cellophane); plastic toys; tarps; & small plastics (e.g. utensils, straws, serving cups, etc.)

Misc.: unusable clothing & fabric; cacti & succulents; cigarette butts; diapers; hard shells (e.g. clams, mussels, & oysters); lint; palm fronds; pet waste; produce stickers; & yucca leaves





CONTAINER ACCESSIBILITY

The container must be accessible at all times on your regularly scheduled collection day. Please make sure that gates are open or that our driver has a key or gate code. Make sure there are no delivery trucks, excessive trash, or other obstructions preventing access to your container.

WEIGHT AND VOLUME LIMITS

Do not overfill your bins or carts. All waste must be placed inside of the containers with the lids closed. Any material or bags placed alongside or above the sides of containers will not be collected. If needed, please request an additional pickup. It is illegal to abandon or dump bulky items or other waste materials in the public right-of-way; this may result in a citation from the City.

Carts cannot exceed a weight limit of 150 pounds; doing so can damage the cart or collection truck. Do not overfill the cart by tightly packing it; all items inside the cart must freely fall out when emptied. Dirt, rock, concrete, and other construction debris are NOT allowed in waste containers. Please order a construction debris (roll-off) container for those materials.

DO NOT OVERLOAD CONTAINERS

Do not overfill your waste containers. Please, request additional collection service if necessary. To maximize capacity of your container, please break down all cardboard boxes.



TEMPORARY BINS

For short-term projects, you can order an additional 3-cubic-yard temporary bin by visiting AthensServices.com/Rent.

EXTRA COLLECTION SERVICE

We have radio-dispatched trucks in your area six days per week (Monday - Saturday) that can provide you with additional collection service as needed. For more information visit, AthensServices.com/Request.

ROLL-OFF SERVICE

These containers handle large volumes of material and are perfect for construction and demolition projects. If you are removing concrete or asphalt, you will need a low-profile, 10-cubic-yard roll-off container. Construction projects may necessitate a large 30 or 40-cubic-yard roll-off container. Please visit AthensServices.com/Rent to place an order.

ILLEGAL DUMPING

It is illegal to abandon or dump bulky waste or other trash in the public right-of-way. Please schedule a bulky item pickup prior to placing materials at the curb (see Bulky Items section for further detail). Please visit AthensServices.com/Bulky to request the collection of any illegally dumped items.



BULKY ITEM PICKUP AND ELECTRONIC WASTE

For an additional fee, commercial customers can contact Athens Services for the removal of large bulky items and electronics.

BULKY ITEM EXAMPLES

Acceptable bulky items include (but are not limited to): dryers, furniture, mattresses, refrigerators, rugs, tree trunks, washing machines, and water heaters.

Automobile parts, construction debris, and hazardous waste are **not allowed** in your waste containers or as part of a bulky item pickup.


It is illegal to dump items on the sidewalk without calling Athens to arrange for a pickup. Illegal dumping will result in a citation ranging from \$250-\$850.



Electronics (e-waste) can include those devices that utilize electrical wiring, plug into an electric outlet, or require a battery or light bulb. Examples of e-waste include (but are not limited to): computers and accessories, circuit boards, extension cords, flash lights, microwaves, phones, stereos, and televisions.



SCHEDULE A PICKUP - BULKY AND E-WASTE

- ▶ Requests must be made 48 hours in advance of your normal collection day by filling out a “**Bulky Pickup**” request at AthensServices.com/Bulky.
- ▶ Requests for bulky pickup can also be made through the City’s Official App. 
- ▶ Place all bulky items next to your containers, before 7:00 a.m. on your scheduled collection day.
- ▶ All bushes, branches, and lumber must be cut and tied in bundles no longer than 4 feet in length. Carpet must be cut into lengths no longer than 4 feet and rolled into a diameter of no more than 18 inches. Refrigerator doors must be removed from the hinges.

DONATE, DON'T DISPOSE

If your items are still in good condition, consider donating. There are several organizations in the community that would be happy to rescue your items:

- ▶ **Out of the Closet Thrift Store**
8224 Santa Monica Blvd.
West Hollywood, CA 90046
(323) 848-9760
10:00 a.m to 7:00 p.m. Daily

- ▶ **National Council of Jewish Women | Los Angeles Council Thrift Store**
360 N. Fairfax Ave.
Los Angeles, CA 90036
(323) 651-2080
For more information or to schedule a donation pickup, visit <https://ncjwla.org/> or call (800) 400-6259.

- ▶ **Goodwill Southern California Donation Center**
8430 Beverly Blvd.
Los Angeles, CA 90025

- ▶ **Craigslist**
<https://losangeles.craigslist.org/>

- ▶ **The Freecycle Network**
<https://www.freecycle.org/>

UNIVERSAL WASTE AND HAZARDOUS WASTE

U-Waste primarily comes from consumer products containing mercury, lead, cadmium, and other substances that are hazardous to human health and the environment. Examples of U-Waste include: batteries, fluorescent light tubes, compact fluorescent light bulbs or CFLs, thermometers, thermostats, and various electronic devices.



U-WASTE DISPOSAL

Businesses and residents can properly dispose of CFLs and batteries at the following location during regular business hours:

- ▶ **Home Depot**
5600 Sunset Blvd.
Los Angeles CA 90028
(323) 461-3303

HAZARDOUS WASTE

It is illegal to dispose of hazardous materials into your waste container, down the drain, or by abandonment. Hazardous waste is any product labeled toxic, poisonous, corrosive, flammable, combustible, or an irritant. Examples include (but are not limited to): antifreeze; automotive fluids; cleaning products; compressed gas cylinders (full or empty); fertilizers, herbicides, and pesticides; paint; pharmaceuticals; pool chemicals; solvents; and more. For a complete list, visit <http://ladpw.org/epd/hhw/>.

Business hazardous waste and electronic waste is not accepted at the County permanent centers or collection events. If you are a small business with hazardous waste, you may qualify for the City of L.A.'s Small Quantity Generator Program. Visit www.businessrecycling.com to locate a proper recycler.



SPECIAL WASTE

Athens Services is qualified and experienced in handling your most challenging waste streams. Athens is staffed with specialists in the area of regulatory framework for hazardous and toxic substances; organic, inorganic, and analytical chemistry; and environmental law. Email specialwaste@athensservices.com for more information.

TIRE RECYCLING

Tires are not permitted for disposal in your trash, recycling, or green waste containers. To find a center that accepts used tires call **1(888) CLEAN LA (888) 253-2652** or visit their website at www.888cleanla.com.



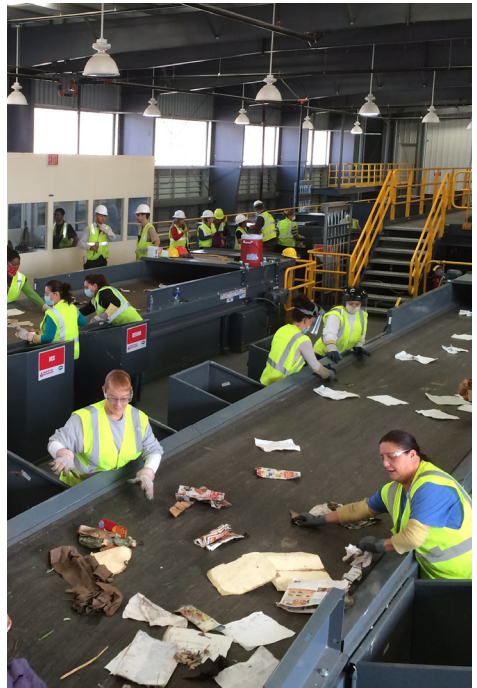
MANDATORY RECYCLING LEGISLATION

MANDATORY COMMERCIAL RECYCLING (AB 341)

To further California's recycling efforts, AB 341 established a statewide recycling goal of 75% by 2020. This law requires California commercial or public entities that generate four or more cubic yards of solid waste per week, and multi-family dwellings of five or more units, to arrange for recycling services.

COMMERCIAL/BUSINESS ORGANICS RECYCLING (AB 1826)

Requires businesses and multi-family buildings (of 5 or more units) that generate two (2) cubic yards or more of solid waste per week to arrange for organics recycling services. As of January 1, 2022, all businesses are required to follow the SB 1383 regulations.



CALIFORNIA'S SHORT-LIVED CLIMATE POLLUTANT REDUCTION STRATEGY (SB 1383)

Targets the reduction of methane emissions from landfills. The law establishes targets to achieve a 75% reduction in the level of the statewide disposal of organics waste from the 2014 level by 2025. It also requires that at least 20% of currently disposed edible food be recovered for human consumption statewide by 2025.

Beginning January 1, 2022, all businesses, multi-family complexes, and single-family home residents are required to subscribe to an organics collection service and must source separate ALL of their green waste, food scraps, and food-soiled paper (100% fiber based) into their green organics container. For more information, visit AthensServices.com/SB-1383.



Organic Waste Examples:



GREEN WASTE

- Flower & hedge trimmings
- Grass clippings
- Leaves & branches
- Lumber, scrap wood, & plywood (not painted or treated)
- Weeds

FOOD SCRAPS

- Bread, rice, & pasta
- Cheese & dairy
- Coffee grounds & filters
- Fruits & vegetables
- Flowers & herbs
- Meat, bones, & poultry
- Seafood & soft shells
- Pet food (non-medicated)

FOOD-SOILED PAPER*

- Food-stained paper
- Paper egg cartons
- Paper napkins & kitchen towels
- Pizza boxes
- Plates
- To-go boxes (no coating)
- Wooden & fiber-based utensils

**Must be 100% fiber-based. NO materials with petroleum based plastic, wax, or bio-plastic coating, liner, or laminate.*

Consider Food Donation:

Food donations are legally protected and supported by the California Department of Public Health. The California Good Samaritan Food Donation Act (AB 1219) provides liability protections for entities that make good faith donations of surplus food. The federal Bill Emerson Good Samaritan Food Donation Act also protects businesses from civil and criminal liability, should donated products cause any harm to the recipient. For further information, please contact the LA County Department of Public Health.



WEST HOLLYWOOD

COMMERCIAL RECYCLING AND WASTE COLLECTION GUIDE

ATHENS SERVICES



PRINTED ON RECYCLED PAPER



P.O. BOX 60009
City of Industry, CA 91716

