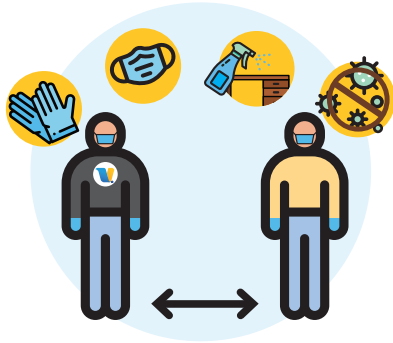




## SAFE ELECTION PLAN

The Los Angeles County “Safe Election Plan” aligns with California’s “Election Administration Guidance under COVID-19.” Each was developed in consultation with relevant health authorities using the best public health information available, including guidance provided by the U.S. Centers for Disease Control and Prevention (CDC) and California public health officials.



### The Los Angeles Registrar-Recorder/County Clerk (RR/CC) will:

- Develop a voting location-specific protection plan.
- Train workers on measures to limit the spread of COVID-19, including screening themselves for symptoms and staying home when necessary.
- Establish prevention and self-screenings measures for workers.
- Establish and communicate physical distancing guidelines.
- Implement hand-washing, mask and disinfection protocols.

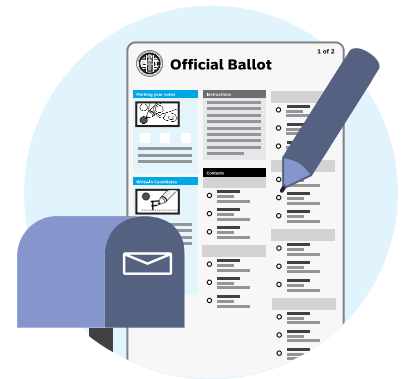
## FOR VOTERS

### All registered voters will be mailed a Vote by Mail ballot.

L.A. County will encourage voters to stay home and vote using their mail-in ballot. However, for some individuals it will still be preferable to vote in person. Wherever in-person voting is offered, we will follow the State and County’s public health and safety guidance to provide a safe voting environment.

### COVID-19 Information for Voting In-Person:

- Masks are recommended for all voters, however voters who are not fully vaccinated must wear a mask in the Vote Center.
- Masks and gloves will be available for voters if requested.
- Hand sanitizer will be provided upon entry and exit of the Vote Center. Hand sanitizer will also be available at key stations during the voting process.
- Social distancing will be encouraged while waiting in line and throughout the check-in and voting process.
- ePollbooks and Ballot Marking devices will be sanitized after every voter.
- Voters will be encouraged to take measures to speed up their election process to limit their time in the Vote Center. This includes verifying voter registration in advance, using the Interactive Sample Ballot (ISB) to pre-mark selections, and bringing their Sample Ballot to speed up the voter check-in.
- Voters will be encouraged to take advantage of early voting and vote at off-peak times if possible.
- Curbside voting will continue to be available for voters who are unable to enter the Vote Center.



***Vote Safely  
at Home,  
Make Your  
Voice Heard!***



## FOR ELECTION WORKERS

### Election Workers will be trained to implement the following guidelines:

- Follow prevention measures while at home to help limit the spread of COVID-19.
- Do not come to the Vote Center if diagnosed with COVID-19, symptomatic, or subject to a quarantine or isolation order.
- Confirmation of self-screening as part of daily worker sign-in.
- Wash hands frequently or use hand sanitizer where soap and water are unavailable.
- Wear protective equipment including masks, face shields, and gloves.
- Establish non-contact norms so workers avoid greeting co-workers and voters with physical contact: "Distancing starts at hello."
- Frequently sanitize work items and commonly used surfaces.
- Sanitize ePollbooks and Ballot Marking Devices before start of day, after each voter, on an hourly schedule, and at closing time.
- Minimize the handling of shared objects.
- Limit nonessential visitors to the Vote Center.
- Take special care to disinfect equipment before use by voters with disabilities because they may interact with the equipment in different ways, and some may have unique health vulnerabilities. Accessibility controls for voting equipment will be cleaned before and after each use.
- Single-use disposable ear covers for device headphones will be provided and replaced after each use.

## VOTE CENTER LAYOUT

- A custom Vote Center layout will be created for each location that ensures appropriate physical distance throughout the Vote Center to the extent possible.
- One-directional foot traffic.
- Separate routes for entry and exit where possible.
- Doors propped open.
- Windows will be opened to increase air circulation where possible.
- Check-in stations and Ballot Marking Devices will be placed to create physical distance.
- Each vote center will have a stop station at the entrance where voters will be provided with hand sanitizer. Masks and gloves will be available for voters if needed. An election worker will be stationed here to remind voters of special precautions.
- If weather permits, the number of voters in the facility will be limited by moving lines outdoors.

## SIGNAGE

- Signage to remind voters, observers and workers of physical distancing, masks, and updated foot traffic patterns.
- Clear signage to indicate appropriate distances.
- Posted at entrances and highly visible locations.
- Visual cues (e.g., floor markings, colored tape, or signs) will be deployed to remind workers and voters of appropriate distancing.

## MEDIA, SOCIAL MEDIA AND DIRECT COMMUNICATION

### The County's media campaign will include the following components:

- Voting by mail is a safe choice to avoid exposure to COVID-19 while voting.
- There are alternatives to provide a ballot replacement or to help you cast a ballot without entering a voting site including procedures for requesting a replacement, drop boxes and curbside voting.
- If you must enter a voting location, please:
  - Wear a mask.
  - Maintain appropriate physical distance from people not from your household.
  - Use hand sanitizer before approaching the check-in station and after voting.
  - Follow any additional guidance provided at the voting location.

This plan serves as a baseline. The RR/CC Safe Election Plan will continue to grow and expand as new guidance and recommendations continue to come out.