

City of West Hollywood  
California 1984

# Information About Local Measure E and Changes To The 2020 Election Format

Fall 2020

# The November 2020 Municipal Election and Voting Changes



The City of West Hollywood local ballot will include:

- Measure E- a  $\frac{3}{4}$ -cent local sales tax measure
- Candidates for City Council
- Visit [www.weho.org/Elections](http://www.weho.org/Elections) for more information.

The State of California has recently changed the format of the election and will be mailing ballots to all voters.

- In person voting will also continue.
- Visit [www.sos.ca.gov/elections](http://www.sos.ca.gov/elections) or [www.lavote.net](http://www.lavote.net) for more information

# What is Measure E?



- On August 3, the West Hollywood City Council unanimously placed Measure E, a 3/4- cent local sales tax measure, on the November 3, 2020 ballot.
- If approved by West Hollywood voters this November, Measure E would provide a source of local funds to maintain critical services as the city addresses the impacts of the Coronavirus.

# Measure E Ballot Question

To maintain City of West Hollywood services and recover from public health emergencies; support senior services and health-related services; keep public areas clean and safe; address homelessness; help retain local businesses and jobs; repair potholes and streets; maintain public safety and 911 response; and provide other City services; shall a measure be adopted establishing a 3/4¢ sales tax providing approximately \$11,000,000 annually until ended by voters, requiring annual independent audits with all funds benefiting West Hollywood residents?

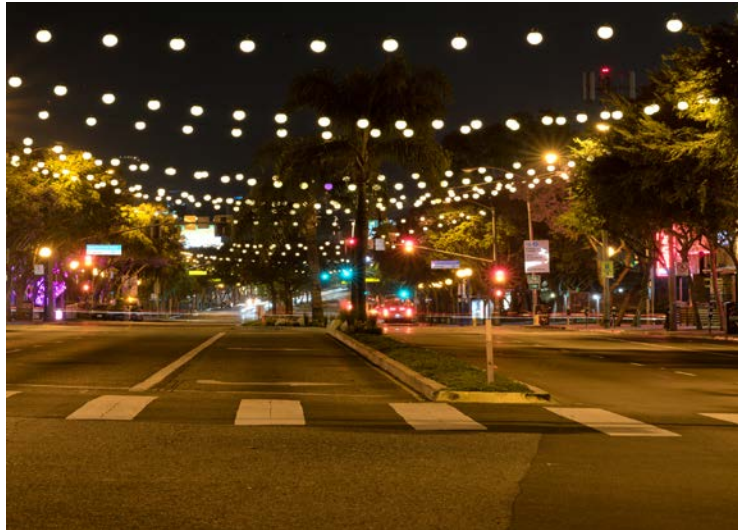
# Why Place Measure E on the Ballot Now?



- The City of West Hollywood is projected to lose as much as \$35,000,000 in revenue this year and next due to COVID.
- If approved by West Hollywood Voters, Measure E would provide the funds needed to prevent cuts to programs and services that could otherwise help our City recover including:
  - Protecting public health
  - Working with local non-profits to help community members in need
  - Helping local businesses survive



# What Priorities Could Measure E Address?



**HIV**  
**ZERO**  
STRATEGIC PLAN



Measure E could help prevent cuts to community-identified service priorities including:

- Addressing homelessness and expanding shelter, health, and mental health services
- Helping retain local businesses and jobs
- Keeping public areas clean and safe
- Maintaining HIV/AIDS health services
- Supporting disaster and emergency preparedness

# Measure E and Addressing Homelessness

Goals of The City  
of West Hollywood  
Five-Year Plan to  
Address Homelessness  
in Our Community

Community

HELP IS  
WITHIN  
REACH.

WEST HOLLYWOOD  
HOMELESS INITIATIVE

- Currently there are over 125 homeless individuals within West Hollywood's less than two-square mile boundary.
- Measure E can help the City advance its goal of addressing and preventing homelessness and protecting public health by helping fund temporary shelter and homeless services including:
  - Health and mental health services
  - Substance abuse treatment
  - Assistance to prevent rental evictions



# Measure E and Protecting West Hollywood Seniors



Measure E funding can be used to:

- Fund support services that more than 4,000 West Hollywood senior citizens and their families rely on including:
  - Meal delivery programs
  - Health screenings
  - Transportation services
  - Cultural and recreation programs
- Address needs at the Senior Center at Plummer Park — used by the City and community partners as a cooling center and gathering point for community members in need.



# Measure E and Accountability



Measure E accountability provisions include:

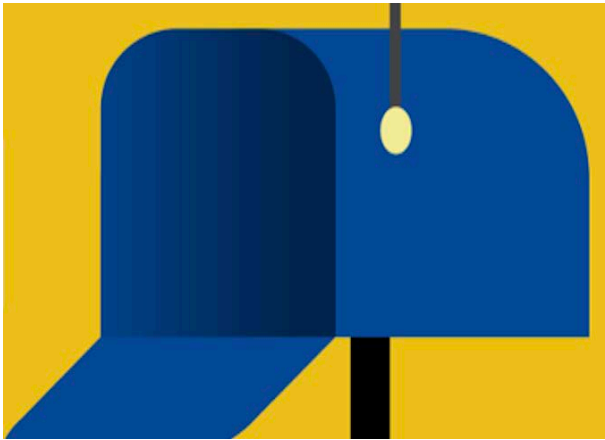
- Annual independent financial audits
- Public review of expenditures during an annual public hearing.
- By law, all Measure E funds must remain in the City of West Hollywood and cannot be taken by the state.

# Who Will Pay For Measure E?



According to city reports, as much as 2/3rds of Measure E would be paid by tourists and visitors to West Hollywood, ensuring out-of-town visitors pay their fair share to use our City's streets, 911 emergency services, parks, and litter removal.

# Voting By Mail



- Beginning with the November 3, 2020 General Election, all registered voters will be mailed a Vote by Mail ballot to ensure a safe and accessible voting option during the COVID-19 pandemic.
- Mailing of Vote by Mail ballots in all elections begins **29 days** prior to Election Day.
- All registered voters have been mailed a Vote by Mail Address Confirmation Notice with information on how to safely vote in the November 3, 2020 General Election.
- If you have recently moved, you must update your registration. You can easily update your address by filling out the Vote by Mail Address Confirmation Notice and dropping it in the mail!
- If your address hasn't changed then no action is needed. Although, we always encourage voters to check their registration information on the registration status tool at [www.lavote.net](http://www.lavote.net).

# Dropping Off Your Vote By Mail Ballot



## Return by mail.

**Must** be postmarked by Election Day. No postage required.



## Drop-off at a Vote by Mail Ballot Drop-Off Location.

List of drop-off locations available at [LAVote.net](http://LAVote.net) prior to each election.



## Drop-off at any Vote Center leading up to and on Election Day.

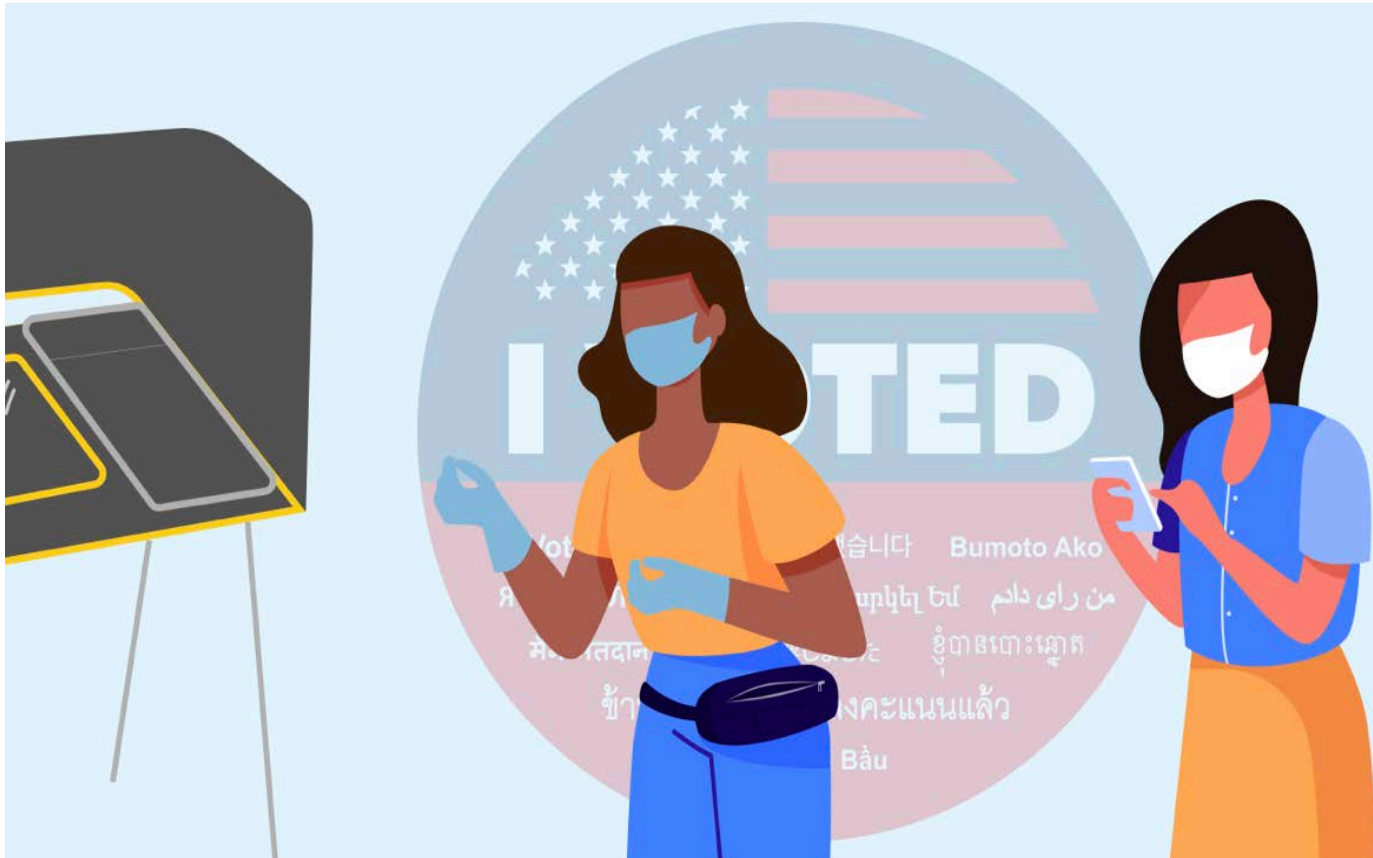
List of Vote Centers available at [LAVote.net](http://LAVote.net) prior to each election.

- There are multiple options on how to return your ballot:
  1. By mail, remember no postage is necessary
  2. In person at any Vote by Mail drop box location
  3. At any Vote Center in L.A. County
- If your ballot is postmarked by Election Day and received within 17 days by the County Elections Department they will process, verify and count that ballot.
- Visit [www.lavote.net](http://www.lavote.net) to track your vote by mail ballot:  
[www.lavote.net/av\\_inquiry](http://www.lavote.net/av_inquiry)





# Voting In Person



## Vote Center Locations:

- Locations will be made available in early October.
- Vote Center locations will also be printed on your Sample Ballot Book and a Vote Center catalog listing all locations will be mailed leading up to the election.

## Vote Center Days and Hours

- Voters will have 10 consecutive days and Election Day to vote in-person at **ANY** participating Vote Center in the County.
- Select Vote Centers will be available beginning Saturday, October 24. All Vote Centers will be available beginning Friday, October 30.
- Vote Centers will be open every day from 10 AM to 7 PM during the early voting period. On Election Day Vote Centers will be open from 7 AM to 8 PM.



City of West Hollywood  
California 1984

Questions?