



ACCESSIBLE UNISEX BATHROOMS: COMMERCIAL

When toilet rooms are provided, each toilet room shall comply with Section 11B-213.2 of the California Building Code.

Unisex toilet rooms (Single-use or family) shall contain not more than one lavatory, and not more than two water closets without urinals or one water closet and one urinal. Doors to unisex toilet rooms and unisex bathing rooms shall have privacy latches.
(CBC Section 11B-213.2.1)

CLEARANCES

Clearances. Clearances shall comply with Section 11B-603.2.

Turning spaces. Turning space complying with Section 11B-304.3.1 or 11B-304.3.2 shall be provided within the room.
(CBC Section 11B-603.2.1, 11B-304.3)

Circular space. The turning space shall be a space of 60 inches (1524 mm) diameter minimum (Fig. 1(a)). The space shall be permitted to include knee and toe clearance complying with Section 11B-306.
(CBC Section 11B-603.2.1, 11B-304.3.1)

T-Shaped space. The turning space shall be a T-shaped space within a 60 inch (1524mm) square minimum with arms and base 36 inches (914 mm) wide minimum. Each arm of the T shall be clear of obstructions 12 inches (305mm) minimum in each direction and the base shall be clear of obstructions 24 inches (610mm) minimum (Fig. 1(b)). The space shall be permitted to include knee and toe clearance complying with Section 11B-306 only at the end of either the base or one arm.
(CBC Section 11B-304.3.2)

Overlap. Required clear floor spaces, clearance at fixtures, and turning space shall be permitted to overlap.
(CBC Section 11B-603.2.2)

Door swings. Doors shall not swing into the clear floor space or clearance required for any fixture. Other than the door to the accessible water closet compartment, a door in any position, may encroach into the turning space by 12 inches (305mm) maximum.
(CBC Section 11B-603.2.3)

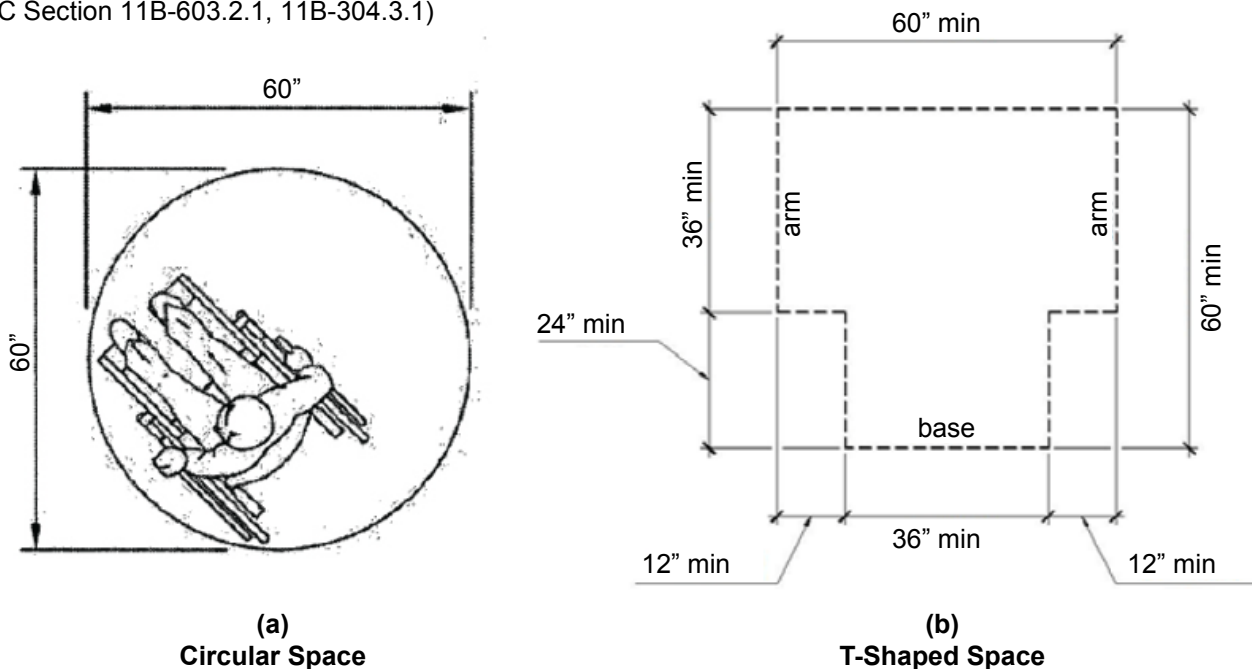


Figure 1 a & b
Wheelchair Turning Space



ACCESSIBLE UNISEX BATHROOMS: COMMERCIAL

WATER CLOSETS

Water closets. Where water closets are provided, at least one shall comply with Section 11B-604 (Fig. 2).
(CBC Section 11B-213.3.2)

Location. The water closet shall be positioned with a wall or partition to the rear and to one side. The center-line of the water closet shall be 17 inches (432mm) minimum to 18 inches (457mm) maximum from the side wall or partition. Water closets shall be arranged for a left-hand or right-hand approach.
(CBC Section 11B-604.2)

Size. Clearance around a water closet shall be 60 inches (1524mm) minimum measured perpendicular from the side wall and 56 inches (1422mm) minimum measured perpendicular from the rear wall. A minimum 60 inches (1524mm) wide and 48 inches (1219mm) deep maneuvering space shall be provided in front of the water closet (Fig.2).
(CBC Section 11B-604.3.1)

Overlap. The Required Clearance around the water closet shall be permitted to overlap the water closet, associated grab bars, dispensers, sanitary napkin disposal units, coat hooks, shelves, accessible routes, clear floor space and clearances required at other fixtures, and the turning space. No fixtures or obstructions shall be located within the water closet clearance.
(CBC Section 11B-604.3.2)

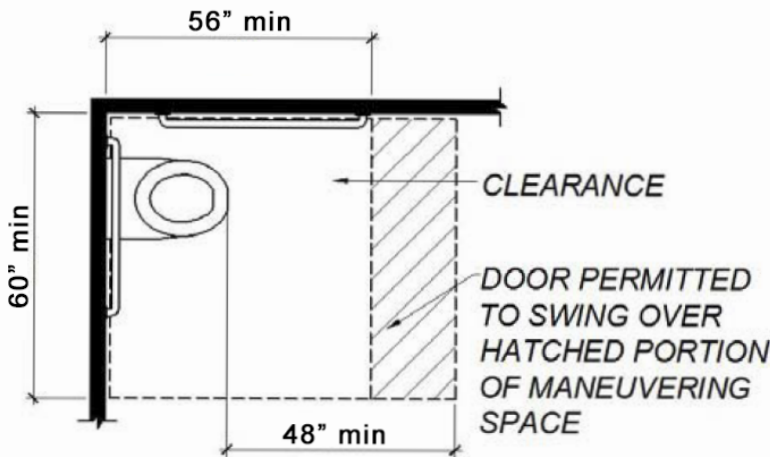


Figure 2
Size of Clearance at Water Closets
(CBC Figure 11B-604.3.1)

Seats. The seat height of a water closet above the finish floor shall be 17 inches (432mm) minimum and 19 inches (483mm) maximum measured to the top of the seat. Seats shall not be sprung to return to a lifted position. Seats shall be 2 inches (51mm) high maximum.
(CBC Section 11B-604.4)

Flush controls. Flush controls shall be hand operated or automatic. Hand operated flush controls shall comply with Section 11B-309 except they shall be located 44 inches (1118mm) maximum above the floor. Flush controls shall be located on the open side of the water closet.
(CBC Section 11B-604.6)

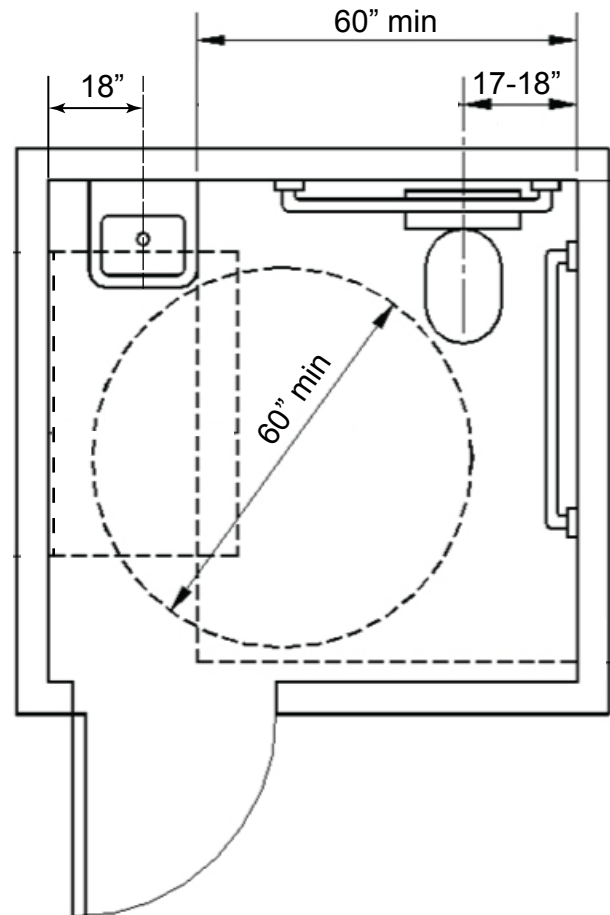


Figure 3
Typical Water Closet Dimensions
(Configuration may vary)



ACCESSIBLE UNISEX BATHROOMS: COMMERCIAL

GRAB BARS

Grab bars. Grab bars for water closets shall comply with Section 11B-609. Grab bars shall be provided on the side wall closet to the water closet and on the rear wall. Where separate grab bars are required on adjacent walls at a common mounting height, an L-shaped grab bar meeting the dimensional requirements of Section 11B-604.5.1 and 11B-604.5.2 shall be permitted. (CBC Section 11B-604.5)

Circular cross section. Grab bars with circular cross sections shall have an outside diameter of 1 1/4 inches (32mm) minimum and 2 inches (51mm) maximum. (CBC Section 11B-609.2.1)

Non-circular cross section. Grab bars with non-circular cross sections shall have a cross-section dimension of 2 inches (51mm) maximum and a perimeter dimension of 4 inches (102mm) minimum and 4.8 inches (122mm) maximum. (CBC Section 11B-609.2.2)

Spacing. The space between the wall and the grab wall shall be 1 1/2 inches (38 mm). The space between the grab bar and projecting objects below and at the ends shall be 1 1/2 inches (38mm) minimum. The space between the grab bar and projecting objects above shall be 12 inches (305mm) minimum. (CBC Section 11B-609.3)

Position of grab bars. Grab bars shall be installed in a horizontal position, 33 inches (838mm) minimum and 36 inches (914mm) maximum above the finish floor measured to the top of the gripping surface. (CBC Section 11B-609.4)

Side wall. The side wall grab bars shall be 42 inches (1067mm) long minimum, located 12 inches (305mm) maximum from the rear wall and extending 54 inches (1372mm) minimum from the rear wall with the front end positioned 24 inches (610mm) minimum in front of the water closet (Fig.5). (CBC Section 11B-604.5.1)

Rear wall. The rear wall grab bar shall be 36 inches (914mm) long minimum and extend from the centerline of the water closet 12 inches (305mm) minimum on one side and 24 inches (610mm) minimum on the other side (Fig.6). (CBC Section 11B-604.5.2)

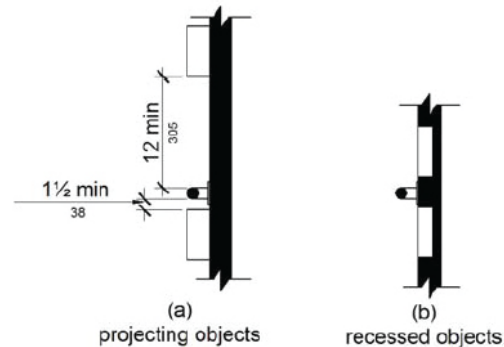


Figure 4
Spacing of Grab Bars
(CBC 2013 Figure 11B-609.3)

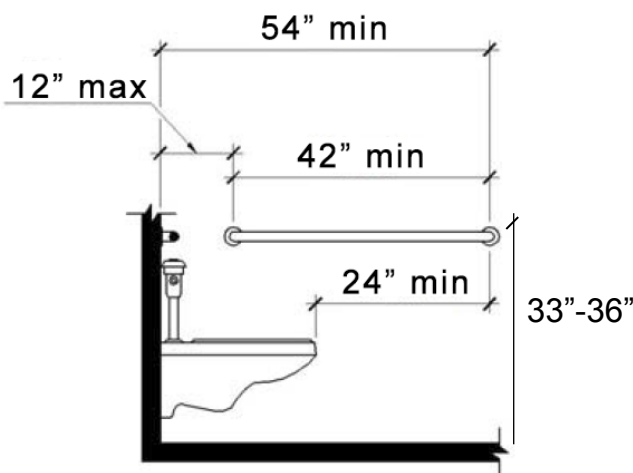


Figure 5
Side Wall Grab Bar at Water Closets
(CBC 2013 Figure 11B-604.5.1)

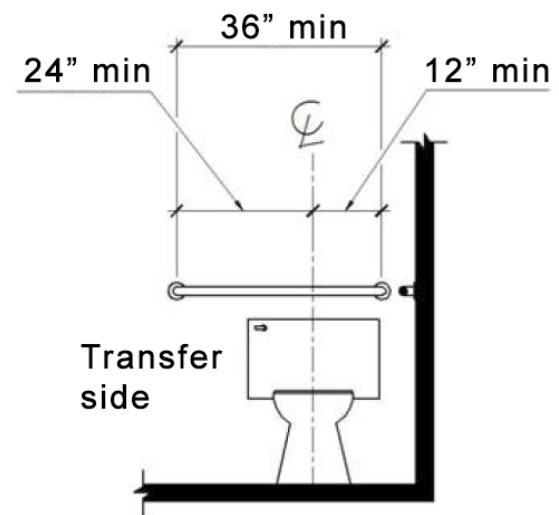


Figure 6
Rear Wall Grab Bar at Water Closets
(CBC Figure 11B-604.5.2)



ACCESSIBLE UNISEX BATHROOMS: COMMERCIAL

URINALS

Urinals. Where one or more urinals are provided, at least one shall comply with Section 11B-605. (CBC Section 11B-213.3.3)

Height and depth. Urinals shall be the stall-type or the wall-hung type with the rim 17 inches (432mm) maximum above the finish floor or ground. Urinals shall be 13 ½ inches (343mm) deep minimum measured from the outer face of the urinal rim to the back of the fixture (Fig.4). (CBC Section 11B-605.2)

Clear floor space. A clear floor or ground space complying with Section 11B-305 positioned for forward approach shall be provided (Fig. 7). (CBC Section 11B-605.3)

Flush controls. Flush controls shall be hand operated or automatic. Hand operated flush controls shall comply with Section 11B-309 except that the flush control shall be mounted at a maximum height of 44 inches (1118mm) above the finish floor. (CBC Section 11B-605.4)

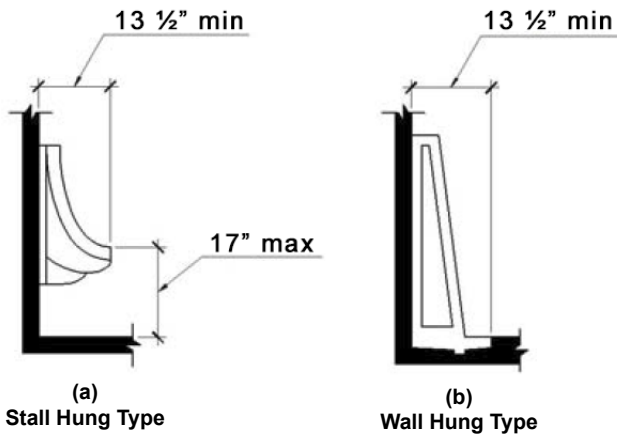


Figure 4
Height and Depth of Urinals
(CBC 2013 Figure 11B-605.2)

LAVATORIES

Lavatories. Where lavatories are provided, at least five percent but no fewer than one shall comply with Section 11B-606. (CBC Section 11B-213.3.4)

Clear floor space. A clear floor space complying with Section 11B-305 (Fig. 7), positioned for a forward approach, and knee and toe clearance complying with Section 11B-306 shall be provided. (Fig. 8 and 9) (CBC Section 11B-606.2)

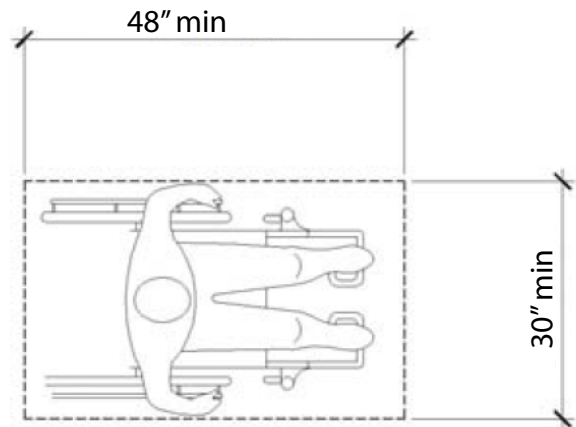


Figure 7
Clear Floor or Ground Space
(CBC 2013 Figure 11B-305.3)



ACCESSIBLE UNISEX BATHROOMS: COMMERCIAL

Knee clearance. At lavatories required to be accessible by Section 11B-213.3.4, space between 9 inches (229mm) and 29 inches (737mm) above the finish floor or ground shall be considered knee clearance.
(CBC Section 11B-306.3.1)

Minimum required depth. At Lavatories required to be accessible by Section 11B-213.3.4, the knee clearance shall be 27 inches (686mm) high minimum above the finish floor or ground at a depth of 8 inches (203mm) minimum increasing to 29 inches (737mm) high minimum above the finish floor or ground at the front edge of a counter with a built-in lavatory or at the front edge of a wall-mounted lavatory fixture.
(CBC Section 11B-306.3.3)

Clearance reduction. Between 9 inches (229mm) and 27 inches (686mm) above the finish floor or ground, the knee clearance shall be permitted to reduce at a rate of 1 inch (25mm) in depth for each 6 inches (152mm) in height.
(CBC Section 11B-306.3.4)

Width. Knee clearance shall be 30 inches (762mm) wide minimum.
(CBC Section 11B-306.3.5)

Height. Lavatories and sinks with the front of the higher rim or counter surface 34 inches (864 mm) maximum above the finish floor or ground.
(CBC Section 11B-606.3)

Faucets. Control faucets shall comply with Section 11B-309. Hand-operated metering faucets shall remain open for 10 seconds minimum.
(CBC Section 11B-606.4)

Exposed pipes and surfaces. Water supply and drain pipes under lavatories and sinks shall be insulated or otherwise configured to protect against contact. There shall be no sharp or abrasive surfaces under lavatories and sinks.
(CBC Section 11B-606.5)

Adjacent side or wall partition. Lavatories, when located adjacent to a side wall or partition, shall be a minimum of 18 inches (457mm) to the centerline of the fixture.
(CBC Section 11B-606.6)

Sink Depth. Sinks shall be 6 ½ inches (165mm) deep maximum.
(CBC Section 11B-606.7)

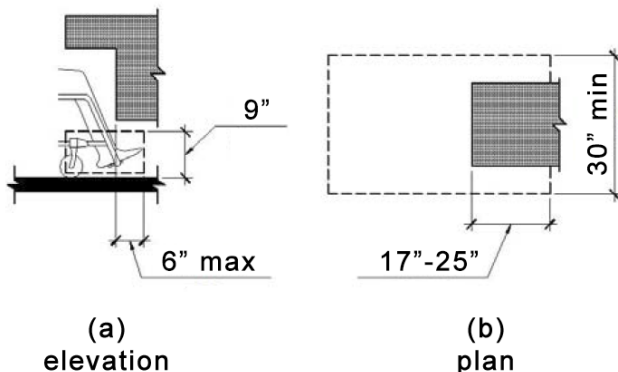


Figure 8
Toe Clearance
(CBC 2013 Figure 11B-604.8.1.4)

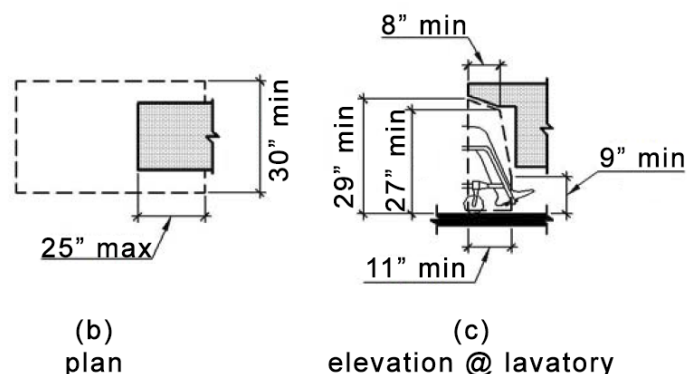


Figure 9
Knee Clearance
(CBC 2013 Figure 11B-306.3)