

# **WEST HOLLYWOOD**

## **RESIDENTIAL AND MULTIFAMILY RECYCLING AND WASTE COLLECTION GUIDE**

**ATHENS SERVICES**



Waste Collection • Recycling • Transfer • Disposal • Street Sweeping  
888-338-6160  
www.athensservices.com



City of West Hollywood  
California 1984



**Athens Services**

**AthensServices.com**

# WELCOME TO ATHENS SERVICES

The City of West Hollywood and Athens Services have partnered to provide enhanced recycling and waste services to your community. At Athens Services, we value each and every customer. We are committed to providing proactive, high quality collection services to the residents of West Hollywood. The following guidelines and program details are provided to ensure that you receive the full benefit of your recycling and solid waste management services.

## GENERAL INFORMATION

### Athens Services

14048 E. Valley Blvd., City of Industry, CA 91746  
P.O. Box 60009, City of Industry, CA 91716  
Phone: (888) 336-6100  
Fax: (626) 709-5601  
[www.AthensServices.com](http://www.AthensServices.com)

### Customer Service Hours:

7:00 a.m. - 5:00 p.m. (Monday - Friday)  
7:00 a.m. - 12:00 Noon (Saturday)

### Collection Hours:

7:00 a.m. - 6:00 p.m.

## HOLIDAYS OBSERVED

Athens Services observes New Year's Day, Memorial Day, Independence Day (4th of July), Labor Day, Thanksgiving Day, and Christmas Day. If the holiday falls on Monday - Saturday, collection services for the remainder of the week will be delayed one day. If the holiday falls on Sunday, there will be no delay in service.



## CUSTOMER SERVICE IS OUR PRIORITY!

Our Customer Service staff is specially trained to respond quickly to your needs and service requests. Simply call **(888) 336-6100** for our customer service center.

Visit our website [www.AthensServices.com](http://www.AthensServices.com) to:

- ▶ Pay your bill and sign up for paperless billing.
- ▶ Live chat with a Customer Service Agent to ask a question or review the services provided to your community.
- ▶ Schedule the pickup of a bulky item.
- ▶ Order temporary services including construction roll-offs and temporary 3-cubic-yard bins for household cleanup.

# RECYCLING, WASTE, AND ORGANICS COLLECTION SERVICES

## SINGLE-FAMILY RESIDENTIAL AND MULTIFAMILY RESIDENTIAL (UP TO FOUR UNITS) – CART SERVICE

Single-family residential service and multifamily residential service (up to four units) includes (3) 64-gallon carts: 1 black cart for landfill, 1 blue cart for recyclables, and 1 green cart for green waste. Single-family and multifamily customers (up to four units) are entitled to unlimited recycling and green waste carts free of charge. Additional trash carts are available for a monthly fee. The standard cart size is 64 gallons, but other sizes are available per request, including 20, 32 and 96 gallons.



## MULTIFAMILY RESIDENTIAL (FIVE UNITS OR MORE) – BIN SERVICE

For multifamily residential (five units or more), standard service includes trash, recycling and green waste. All multifamily customers are provided with two 96-gallon recyclable carts and one 96-gallon green waste cart. Additional carts may be requested for no additional cost.

For trash service, multifamily customers can choose from a variety of bin sizes: 1 cubic yard, 1.5 cubic yard, 2 cubic yard, 3 cubic yard, 4 cubic yard, 5 cubic yard, 6 cubic yard, and compactor service. Bins are also available for recycle service for multifamily residential accounts.





# RECYCLE



Bagged Shredded Paper, Flattened Cardboard, and Paper



Milk Cartons



Plastic Bottles and Cups, Take-out Container, Round Dairy Tubs, Milk Jugs



Ferrous Metals, Aluminum Cans, Foils, Metal Cans, Aluminum Pans



Glass Bottles and Jars

## NO LIQUIDS OR FOOD

*Remember to flatten cardboard boxes before placing in container.*

### X NO!



Food Waste



Chemicals



Batteries



FOAM

Foam



Yard Waste



Electronics



Sharp Objects



# LANDFILL



Diapers



Coffee Cups and Lids



Juice Packs

## FOAM



Foam



Cereal Bars



Broken Ceramics



Condiment Packages



Coffee Pods



Paper Cups, Lids, Straws



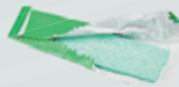
Chip Bags



Latex Gloves



Pet Waste



Gum Wrappers

**NO FOOD OR GREEN WASTE, BUT PALM FRONDS ARE ACCEPTED.**

## **X NO!**



Batteries



Chemicals



Light Bulbs



Electronics



Sharp Objects



Paint

*Remember to close the lids to your bin after disposing of trash.*



# GREEN WASTE (YARD WASTE)



Branches



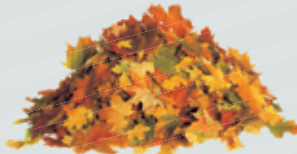
Tree Trimmings



Grass Clippings



Flowers



Leaves



Scrap Wood  
*No painted or treated wood.  
No larger than 4 inches in diameter and 4 feet in length.*

**DO NOT PUT PALM FRONDS OR SUCCULENTS IN YOUR GREEN WASTE BIN.**

*Reminder: Pet waste should be placed in the trash bin.*

**X NO!**



Pet Waste



Foam



Rocks



Soil



Palm Fronds



Cacti, Succulents or Yucca



### **CART PLACEMENT**

Place your carts at the curb, sidewalk, or in adjacent alley with the wheels against the curb and the lid closed by 7:00 a.m. on your collection day. Place carts side-by-side, spaced about 1 foot apart, and at least 3 feet from parked vehicles or objects. Please make sure all waste containers are not blocked. **Carts should be returned to your property by 6:00 p.m. on day of service.**

## **MULTIFAMILY CUSTOMER DISCOUNTS**

### **SENIOR DISCOUNT**

Athens Services provides a 10% service fee discount to multifamily property owners (five units or more) who meet **all** of the following criteria: (1) are 65 years of age or older, (2) are the legal owners of the multifamily residential building, and (3) reside in the building. Contact Athens Services for additional information at (888) 336-6100.

### **LOW-INCOME DISCOUNT**

Athens Services provides a 10% service fee discount to multifamily property owners (five units or more) who meet **all** of the following criteria: (1) are the legal owners of the multifamily residential building, (2) reside in the building, and (3) have an annual gross income for the household which is less than 50 percent (50%) of the area median income. Contact Athens Services for additional information at (888) 336-6100.

### **WEIGHT AND VOLUME LIMITS**

Carts cannot exceed a weight limit of 150 pounds, doing so can damage the cart or collection truck. Do not overfill the cart by tightly packing it; all items inside the cart must freely fall out when emptied. Do not place auto parts; hazardous waste; construction debris such as bricks, concrete, dirt, gravel, rock, and sand; or other heavy materials into your waste carts.

Please order a construction debris (roll-off) container for those materials. If a cart is unserviceable, Athens Services will leave a warning notice indicating why the cart was not emptied. Please correct the problem for your next week's collection.

### **TEMPORARY BINS AND ROLL OFF CONTAINERS**

If you are cleaning out your home, complex, or garage you may need a 3-cubic-yard, temporary bin. If you are removing concrete or asphalt, you will need a low-profile, 10-cubic-yard roll-off container. Construction projects may necessitate large 30-cubic-yard roll-off containers. Please visit [www.athensservices.com](http://www.athensservices.com) and submit a "Request Services" form to place an order.



### **ORDERING ADDITIONAL CARTS**

To order additional carts, replace broken carts, or make changes to your cart size, visit [www.AthensServices.com](http://www.AthensServices.com) and fill out a "Request Services" form. Standard residential service includes (3) 64-gallon carts – 1 black cart for trash, 1 blue cart for recyclables, and 1 green cart for green waste. You may request smaller or larger trash, recycling or green waste carts in 20-gallon, 32-gallon, and 96-gallon sizes.

Additional trash carts are available upon request for customers who require more containers beyond standard service, for an additional fee. In West Hollywood, recycling is free. You may request additional recycling and green waste carts at no additional charge.

## **HOLIDAY TREE RECYCLING**

Trees are **100% recyclable!** Holiday trees are collected on your normal pickup day, beginning December 26th and continuing through the second Saturday in January. Trees must be cut into lengths no longer than 4 feet; be free of ornaments, garlands, tinsel and flocking; and stands must be removed. Place the trees next to your regular carts or bins on your scheduled collection day.



## **BULKY ITEM PICKUP AND ELECTRONIC WASTE**

Residents receive unlimited bulky item and electronic waste collection at no additional charge.



## **BULKY ITEM EXAMPLES**

Acceptable bulky items include (but are not limited to): dryers, furniture, mattresses, refrigerators, rugs, tree trunks, washing machines, and water heaters.

It is illegal to dump items on the sidewalk without calling Athens to arrange for a pickup. Illegal dumping will result in a citation ranging from \$250-\$850.

## **ELECTRONIC WASTE EXAMPLES**


Electronics (e-waste) includes devices that utilize electrical wiring, plug into an electric outlet, or require a battery or light bulb. Examples of e-waste include (but are not limited to): computers and accessories, circuit boards, extension cords, flash lights, microwaves, phones, stereos, and televisions.



## **NOT ACCEPTABLE**

Automobile parts, construction debris, and hazardous waste are **not allowed** in your waste containers or as part of a bulky item pickup. Please see below for special collection options.

## **SCHEDULE A PICKUP - BULKY AND E-WASTE**

- ▶ Requests must be made 48 hours in advance of your normal collection day by filling out a “**Bulky Pickup**” request at [www.athensservices.com](http://www.athensservices.com).
- ▶ Requests for bulky pickup can also be made through the City’s Official App. 
- ▶ Place all bulky items curbside, before 7:00 a.m. on your scheduled collection day.
- ▶ All bushes, branches, and lumber must be cut and tied in bundles no longer than 4 feet in length. Carpet must be cut into lengths no longer than 4 feet and rolled into a diameter of no more than 18 inches. Refrigerator doors must be removed from the hinges.



## DONATE, DON'T DISPOSE

If your items are still in good condition, consider donating. There are several organizations in the community that would be happy to rescue your items:

- ▶ **Out of the Closet Thrift Store**  
8224 Santa Monica Blvd.  
West Hollywood, CA 90046  
(323) 848-9760  
10:00 a.m. to 7:00 p.m. Daily
- ▶ **National Council of Jewish Women | Los Angeles Council Thrift Store**  
455 N. Fairfax Ave.  
Los Angeles, CA 90036  
(323) 651-2080  
For more information or to schedule a pickup, visit <https://ncjwla.org/council-thrift-shops/> or call (800) 400-6259.
- ▶ **Goodwill Southern California Donation Center**  
8430 Beverly Blvd.  
Los Angeles, CA 90025
- ▶ **Craigslist**  
<https://losangeles.craigslist.org/>
- ▶ **The Freecycle Network**  
<https://www.freecycle.org/>

## HOUSEHOLD HAZARDOUS WASTE

It is illegal to dispose of household hazardous waste (HHW) and universal waste (u-waste) in your recycling, trash, or green waste containers; down the drain; or by abandonment. These products can pose a threat to human health and the environment if they are incorrectly handled or disposed of.



## HAZARDOUS WASTE EXAMPLES

HHW is any product labeled toxic, poisonous, corrosive, flammable, combustible, or an irritant. Examples include antifreeze; automotive fluids; cleaning products; compressed gas cylinders (full or empty); fertilizers, herbicides, and pesticides; paint; pharmaceuticals; pool chemicals; solvents; and more. For a complete list, visit <http://ladpw.org/epd/hhw/>.



## UNIVERSAL WASTE EXAMPLES

U-waste comes primarily from consumer products containing mercury, lead, cadmium, and other substances that are hazardous to human health and the environment. Examples of u-waste include batteries, fluorescent light tubes, compact fluorescent light bulbs (CFLs), thermometers, thermostats, and various electronic devices.



## PROPER DISPOSAL

HHW and u-waste can be disposed at Los Angeles County Department of Public Works -sponsored collection events. For additional information, call **1(888)CLEAN LA (888-253-2652)** or visit **[www.lacsd.org](http://www.lacsd.org)**. Residents can properly dispose of CFLs and batteries at the following location during regular business hours:

### ► Home Depot

5600 Sunset Blvd., Los Angeles CA 90028  
(323) 461-3303

## NEED TO GET RID OF LEFTOVER PAINT?

Residents can conveniently and properly dispose of leftover paint by taking it to the following locations during regular business hours:

### ► Dunn-Edwards

7064 Sunset Blvd., Los Angeles, CA 90028  
(323) 469-1743

### ► Sherwin-Williams

805 N. Highland Ave., Los Angeles, CA 90038  
(323) 467-2468

### ► Sherwin-Williams

1404 S. La Cienega Blvd., Los Angeles, CA 90035  
(310) 289-0461

### ► Sherwin-Williams

883 N. Western Ave., Los Angeles, CA 90029  
(323) 460-2011

For more information, please visit the City's website at **<http://weho.org/services/trash-recycling>**

Los Angeles County has five permanent drop-off points for HHW. The closest site to West Hollywood is the West Los Angeles location (UCLA S.A.F.E Center), which is located at 550 Charles E. Young Dr. West Los Angeles CA 90095. Their hours are Thursday, Friday and Saturday, 8 a.m.-2 p.m.

For more information, please call **(800) 773-2489**.



## SHARPS DISPOSAL

Sharps waste is hazardous waste. California prohibits the disposal of sharps (hypodermic needles, pen needles, intravenous needles, lancets, and other devices used to penetrate the skin for the delivery of medications) in your trash, recycling, or green waste carts. Home-generated needles and other sharps thrown into household waste present a great risk to sanitation and sewage treatment workers, janitors, housekeepers, children, and pets. Do NOT place in any recycling, landfill, or organics container!

The City of West Hollywood offers free "Sharps Disposal by Mail". To enroll, call the City's Office of Environmental Services at **(323) 848-6404** or visit City Hall, 2nd Floor, Department of Public Works. Please be prepared to provide proof of residency upon request. "Sharps Disposal by Mail" kits store used needles, syringes and lancets - and when full, are mailed to a facility that will dispose of them properly, as biohazardous waste. The original packing box also doubles as the mail-back box, with pre-paid postage. This action will protect your families, sanitation workers and others from accidental injury by needles thrown in the trash.

Sharps may also be disposed of at a sharps drop-off box at the West Hollywood Sheriff Station located at 780 N. San Vicente Blvd. Sharps may be placed in any sturdy container with a lid that will fit through the narrow opening provided. The box is located in the station's parking lot, and is available 24 hours a day, 7 days a week, FREE of charge.

For more information, visit the City's website at **<http://weho.org/services/trash-recycling>**



## TIRE RECYCLING

Tires are not permitted for disposal in your trash, recycling, or green waste containers. To find a center that accepts used tires call:

**1(888) CLEAN LA (888) 253-2652**, or visit their website at [www.888cleanla.com](http://www.888cleanla.com).



## USED OIL RECYCLING

Motor oil improperly disposed onto the ground or into storm drains can contaminate and pollute the soil, groundwater, and the ocean. Take your used motor oil to a certified collection center to be recycled for free.

The following local businesses are state-certified, used oil and filter collection centers:

- ▶ **One Stop Auto Shop**  
7935 Santa Monica Blvd., West Hollywood, CA 90046  
(323) 227-9999
- ▶ **EZ Lube #63**  
6536 Melrose Ave., Los Angeles, CA 90038  
(323) 790-0333
- ▶ **EZ Lube #54**  
201 South La Brea Ave., Los Angeles, CA 90036  
(323) 930-9389
- ▶ **AutoZone #5432**  
5852 Santa Monica Blvd., Los Angeles, CA 90038  
(323) 467-8182
- ▶ **AutoZone #5434**  
1308 N Highland Ave., Los Angeles, CA 90028  
(323) 466-9285
- ▶ **Pep Boys #604**  
6125 Hollywood Blvd., Hollywood, CA 90028  
(323) 469-1195

## MANDATORY RECYCLING LEGISLATION

### COMMERCIAL RECYCLING (AB 341)

California Assembly Bill (AB 341) requires all businesses and multifamily buildings (of five or more units) that generate 4 cubic yards or more of commercial solid waste per week to arrange for recycling services.

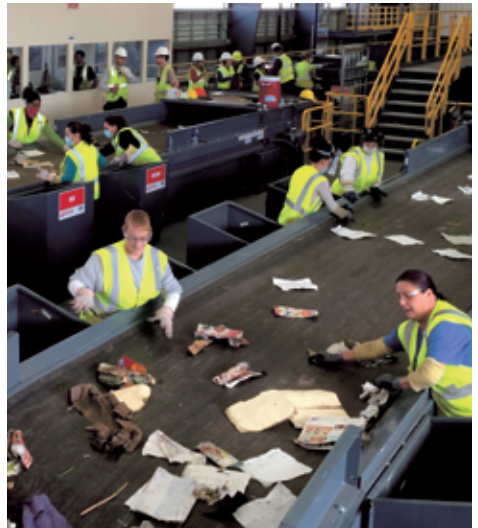
**Is My Business Compliant?** Yes! If you are a customer of Athens Services, you are compliant with AB 341. The Athens Services state-of-the-art Material Recovery Facilities (MRFs) process trash and recyclables to ensure AB 341 compliance.

For more information, please visit: <http://athensservices.com/diversionab-341> or visit [calrecycle.ca.gov](http://calrecycle.ca.gov).

### COMMERCIAL ORGANICS RECYCLING (AB 1826)

California **Assembly Bill 1826 - Mandatory Commercial Organics Recycling Law** requires businesses and apartments (of five or more units) that generate (on a weekly basis) 4 cubic yards or more of municipal solid waste to implement organics waste recycling (including landscape waste and food waste).

For more information on the compliance timeline and legislation, please visit: <https://athensservices.com/organics-waste-and-ab-1826/>





# **WEST HOLLYWOOD**

## **RESIDENTIAL AND MULTIFAMILY RECYCLING AND WASTE COLLECTION GUIDE**

### **ATHENS SERVICES**



PRINTED ON RECYCLED PAPER



P.O. BOX 60009  
City of Industry, CA 91716

PRSRRT STD  
U.S. POSTAGE  
**PAID**  
PERMIT #100  
CLAREMONT, CA