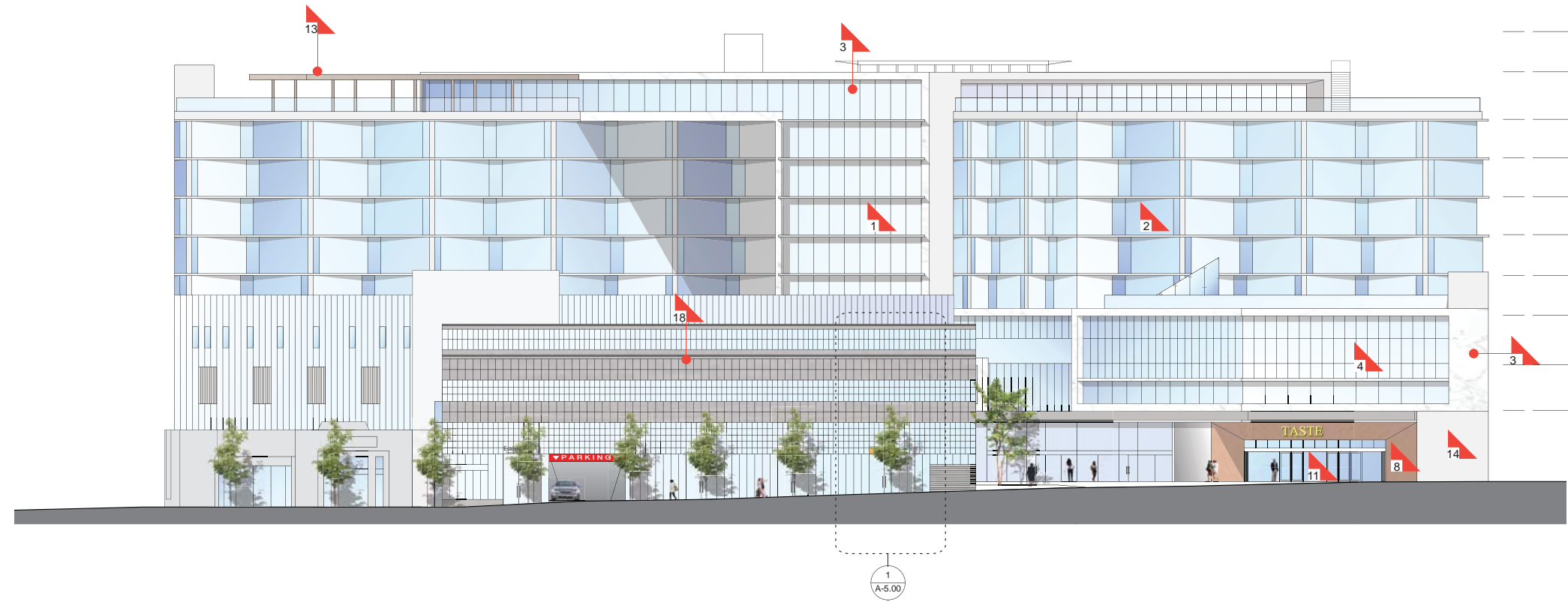


- ROOF TOP ACCESSORIES
EL 123'-0"
- RESTAURANT ROOF
EL 113'-0"
- HOTEL ROOF
EL 98'-0"
- LEVEL 8
EL 86'-0"
- LEVEL 7
EL 76'-0"
- LEVEL 6
EL 66'-0"
- LEVEL 5
EL 56'-0"
- LEVEL 4
EL 46'-0"
- LEVEL 3
EL 33'-0"
- LEVEL 2
EL 21'-0"
- LA PEER
4'-0"

2 LA PEER ELEVATION
1/16" = 1' - 0"



- ROOF TOP ACCESSORIES
EL 123'-0"
- RESTAURANT ROOF
EL 113'-0"
- HOTEL ROOF
EL 98'-0"
- LEVEL 8
EL 86'-0"
- LEVEL 7
EL 76'-0"
- LEVEL 6
EL 66'-0"
- LEVEL 5
EL 56'-0"
- LEVEL 4
EL 46'-0"
- LEVEL 3
EL 33'-0"
- LEVEL 2
EL 21'-0"
- ROBERTSON BLVD
EL 0'-0" (212)

1 ROBERTSON BOULEVARD ELEVATION
1/16" = 1' - 0"

MATERIAL LEGEND

- 1 LOW-E GLAZING
W/ CERAMIC FRIT
- 2 BRONZE ANODIZED
ALUM. WINDOW WALL
- 3 MARBLE TILE
- 4 BRONZE ANODIZED
POINT SUPPORT WINDOW WALL
- 5 CHANNEL GLASS
- 6 DICHROIC GLASS LOUVER
- 7 PAINTED MTL CLADDING
- 8 ENGINEERED WOOD
CLADDING
- 9 FIBER CEMENT CLADDING
- 10 MODULAR GREEN WALL
SYSTEM
- 11 ANODIZED ALUMINUM
STOREFRONT SYSTEM
- 12 SAND SMOOTH
ACRYLIC PLASTER
- 13 TIMBER LATTICE
- 14 CAST-IN-PLACE CONCRETE
- 15 STAINLESS STEEL
- 16 WOOD SLATS
- 17 POINT SUPPORT
GLASS GUARDRAIL
- 18 PAINTED STEEL

CONSULTANT INFORMATION

LANDSCAPE ARCHITECT
AHBE Landscape Architects
617 West Seventh St, Suite 304
Los Angeles, CA 90017
P: 213 694 3800
F: 213 694 3801
E: cabei@ahbe.com

LIGHTING DESIGN
Horton, Lees, Brogden Lighting Design
6580 Washington Blvd.
Culver City, CA 90232
P: 310 837 0929
F: 310 837 0902
E: taghassan@hblighting.com

STRUCTURAL
Englekirk
888 S. Figueroa Street, 18th Floor
Los Angeles, CA 90017
P: 323.733.6673
E: vladim.volnyy@englekirk.com

ROBERTSON LANE
645-681 N. Robertson Boulevard and 648-668 N. La Peer Drive.
West Hollywood, CA 90069

Faring Capital // Jason Moulton, Managing Partner
8899 Beverly Blvd., Suite 716 West Hollywood, CA 90048
P: 310-995-7399 E: jason@faringcapital.com

HODGETTS + FUNG
DESIGN AND ARCHITECTURE

hplusf^{LLC}

5837 Adams Blvd.
Culver City, CA 90232
323.937.2150
mailbox@hplusf.com

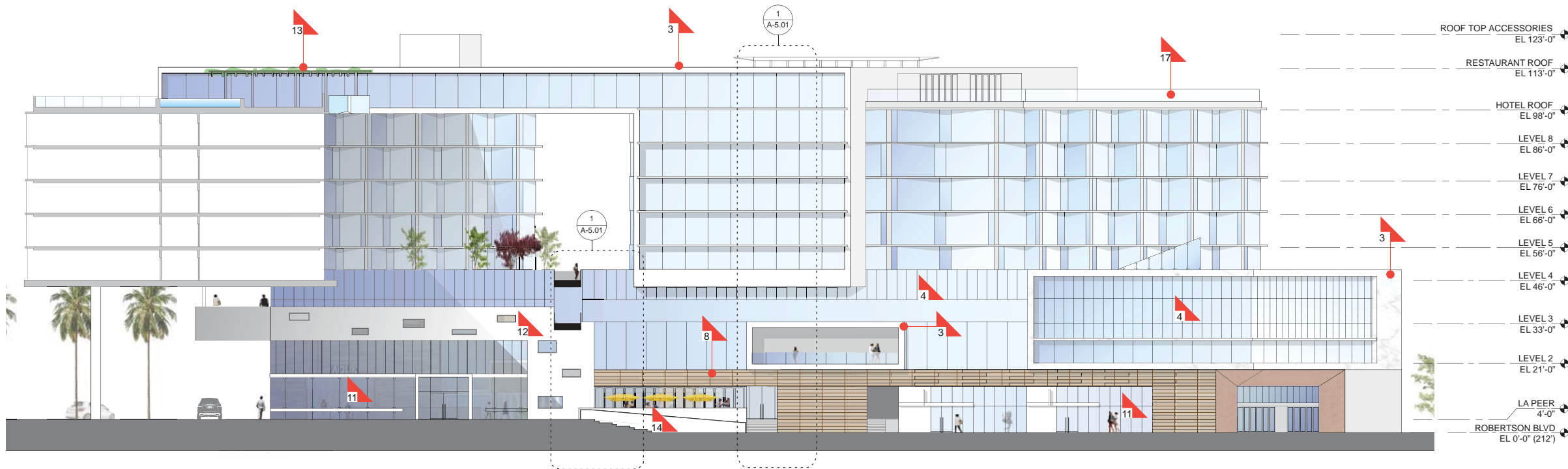
The designs, details and specifications contained in this drawing are confidential. The recipients of this drawing hereby acknowledge and agree that it is the sole property of Hodgetts + Fung and that they shall neither use nor reveal any of the designs, details and specifications contained in this drawing, outside of the contractual agreement expressed without permission from Hodgetts + Fung.

Deviations from this drawing shall not be made without consulting Hodgetts + Fung. In case of discrepancies between drawings, specifications, and details included in contract documents, Hodgetts + Fung shall decide which deviation must be followed and their decision shall be final.

Copyright Hodgetts + Fung Design and Architecture.
All rights reserved.

MARK	DATE	DESCRIPTION
	03.29.15	DEVELOPMENT REVISIONS
	04.12.16	DEVELOPMENT REVISIONS

DRAWING	PROJECT NO.	1330
SUBMISSION	DEVELOPMENT PERMIT	
DATE	06.16.14	
SCALE	1/16" = 1'-0"	
DRAWN BY	AK	
CHECKED BY	DV	SHEET SIZE: 30" x 40"
DRAWING TITLE	BUILDING ELEVATIONS	
DRAWING NO.	A-3.00	



- ROOF TOP ACCESSORIES
EL 123'-0"
- RESTAURANT ROOF
EL 113'-0"
- HOTEL ROOF
EL 98'-0"
- LEVEL 8
EL 86'-0"
- LEVEL 7
EL 76'-0"
- LEVEL 6
EL 66'-0"
- LEVEL 5
EL 56'-0"
- LEVEL 4
EL 46'-0"
- LEVEL 3
EL 33'-0"
- LEVEL 2
EL 21'-0"
- LA PEER
4'-0"
- ROBERTSON BLVD
EL 0'-0" (212)

MATERIAL LEGEND

- 1 LOW-E GLAZING
W/ CERAMIC FRIT
- 2 BRONZE ANODIZED
ALUM. WINDOW WALL
- 3 MARBLE TILE
- 4 BRONZE ANODIZED
POINT SUPPORT WINDOW WALL
- 5 CHANNEL GLASS
- 6 DICHROIC GLASS LOUVER
- 7 PAINTED MTL CLADDING
- 8 ENGINEERED WOOD
CLADDING
- 9 FIBER CEMENT CLADDING
- 10 MODULAR GREEN WALL
SYSTEM
- 11 ANODIZED ALUMINUM
STOREFRONT SYSTEM
- 12 SAND SMOOTH
ACRYLIC PLASTER
- 13 TIMBER LATTICE
- 14 CAST-IN-PLACE CONCRETE
- 15 STAINLESS STEEL
- 16 WOOD SLATS
- 17 POINT SUPPORT
GLASS GUARDRAIL
- 18 PAINTED STEEL

LANDSCAPE ARCHITECT
AHBE Landscape Architects
617 West Seventh St, Suite 304
Los Angeles, CA 90017
P: 213 694 3801
F: 213 694 3801
E: cabei@ahbe.com

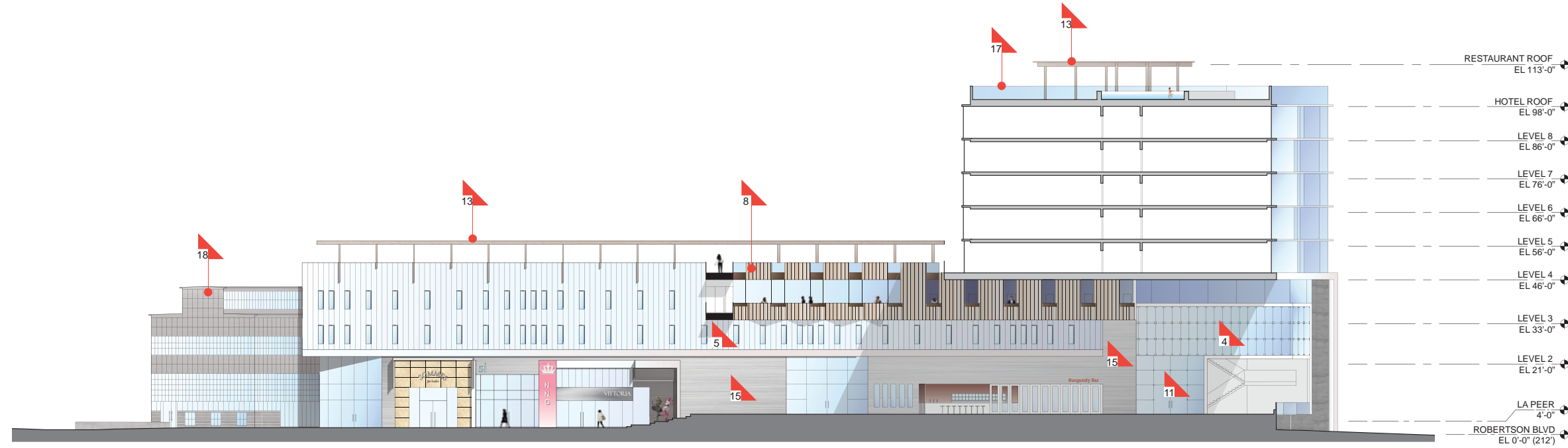
LIGHTING DESIGN
Horton, Lees, Brogden Lighting Design
6580 Washington Blvd.
Culver City, CA 90232
P: 310 837 0929
F: 310 837 0929
E: taghassan@hblighting.com

STRUCTURAL
Englekirk
888 S. Figueroa Street, 18th Floor
Los Angeles, CA 90017
P: 323.733.6673
E: vladim.volnyy@englekirk.com

ROBERTSON LANE
645-681 N. Robertson Boulevard and 648-668 N. La Peer Drive.
West Hollywood, CA 90069

Faring Capital // Jason Moulton, Managing Partner
8899 Beverly Blvd., Suite 716 West Hollywood, CA 90048
P: 310-995-7399 E: jason@faringcapital.com

2 ROBERTSON LANE NORTH
1/16" = 1' - 0"



- RESTAURANT ROOF
EL 113'-0"
- HOTEL ROOF
EL 98'-0"
- LEVEL 8
EL 86'-0"
- LEVEL 7
EL 76'-0"
- LEVEL 6
EL 66'-0"
- LEVEL 5
EL 56'-0"
- LEVEL 4
EL 46'-0"
- LEVEL 3
EL 33'-0"
- LEVEL 2
EL 21'-0"
- LA PEER
4'-0"
- ROBERTSON BLVD
EL 0'-0" (212)

1 ROBERTSON LANE SOUTH
1/16" = 1' - 0"

HODGETTS + FUNG
DESIGN AND ARCHITECTURE
hplusf.com
5837 Adams Blvd.
Culver City, CA 90232
3 2 3 . 9 3 7 . 2 1 5 0
mailbox@hplusf.com



The designs, details and specifications contained in this drawing are confidential. The recipients of this drawing hereby acknowledge and agree that it is the sole property of Hodgetts + Fung and that they shall neither use nor reveal any of the designs, details and specifications contained in this drawing, outside of the contractual agreement expressed within permission from Hodgetts + Fung.

Deviations from this drawing shall not be made without consulting Hodgetts + Fung. In case of discrepancies between drawings, specifications, and details included in contract documents, Hodgetts + Fung shall decide which notation must be followed and their decision shall be final.

Copyright Hodgetts + Fung Design and Architecture.
All rights reserved.

MARK	DATE	DESCRIPTION
	03.24.15	DEVELOPMENT REVISIONS
	04.12.16	DEVELOPMENT REVISIONS

PROJECT NO.	1330
SUBMISSION DATE	DEVELOPMENT PERMIT
DATE	06.16.14
SCALE	1/16" = 1'-0"
DRAWN BY	AK
CHECKED BY	DV SHEET SIZE: 30" x 40"
DRAWING TITLE	BUILDING ELEVATIONS
DRAWING NO.	A-3.01

MATERIAL LEGEND

- 1 LOW-E GLAZING
W/ CERAMIC FRIT
- 2 BRONZE ANODIZED
ALUM. WINDOW WALL
- 3 MARBLE TILE
- 4 BRONZE ANODIZED
POINT SUPPORT WINDOW WALL
- 5 CHANNEL GLASS
- 6 DICHROIC GLASS LOUVER
- 7 PAINTED MTL CLADDING
- 8 ENGINEERED WOOD
CLADDING
- 9 FIBER CEMENT CLADDING
- 10 MODULAR GREEN WALL
SYSTEM
- 11 ANODIZED ALUMINUM
STOREFRONT SYSTEM
- 12 SAND SMOOTH
ACRYLIC PLASTER
- 13 TIMBER LATTICE
- 14 CAST-IN-PLACE CONCRETE
- 15 STAINLESS STEEL
- 16 WOOD SLATS
- 17 POINT SUPPORT
GLASS GUARDRAIL
- 18 PAINTED STEEL

CONSULTANT INFORMATION

LANDSCAPE ARCHITECT
AHBE Landscape Architects
617 West Seventh St, Suite 304
Los Angeles, CA 90017
P: 213 694 3801
F: 213 694 3801
E: cabei@ahbe.com

LIGHTING DESIGN
Horton, Lees, Brogden Lighting Design
6580 Washington Blvd.
Culver City, CA 90232
P: 310 837 0929
F: 310 837 0902
E: taghassan@hblighting.com

STRUCTURAL
Englekirk
888 S. Figueroa Street, 18th Floor
Los Angeles, CA 90017
P: 323.733.6673
E: vladimk.volnyy@englekirk.com

ROBERTSON LANE
645-681 N. Robertson Boulevard and 648-668 N. La Peer Drive.
West Hollywood, CA 90069

Faring Capital // Jason Moulton, Managing Partner
8899 Beverly Blvd., Suite 716 West Hollywood, CA 90048
P: 310-995-7399 E: jason@faringcapital.com

HODGETTS + FUNG
DESIGN AND ARCHITECTURE
hplusf.com
5837 Adams Blvd.
Culver City, CA 90232
3 2 3 . 9 3 7 . 2 1 5 0
mailbox@hplusf.com



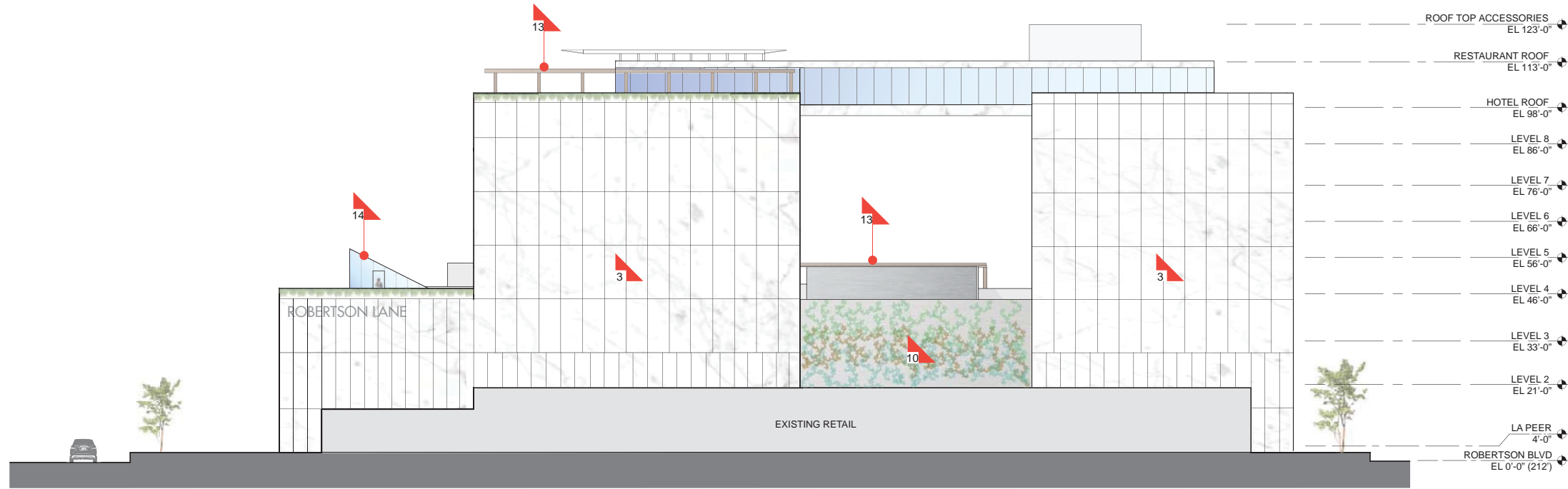
The designs, details and specifications contained in this drawing are confidential. The recipients of this drawing hereby acknowledge and agree that it is the sole property of Hodgett + Fung and that they shall neither use nor reveal any of the designs, details and specifications contained in this drawing, outside of the contractual agreement expressed without permission from Hodgett + Fung.

Deviations from this drawing shall not be made without consulting Hodgett + Fung. In case of discrepancies between drawings, specifications, and details included in contract documents, Hodgett + Fung shall decide which notation must be followed and their decision shall be final.

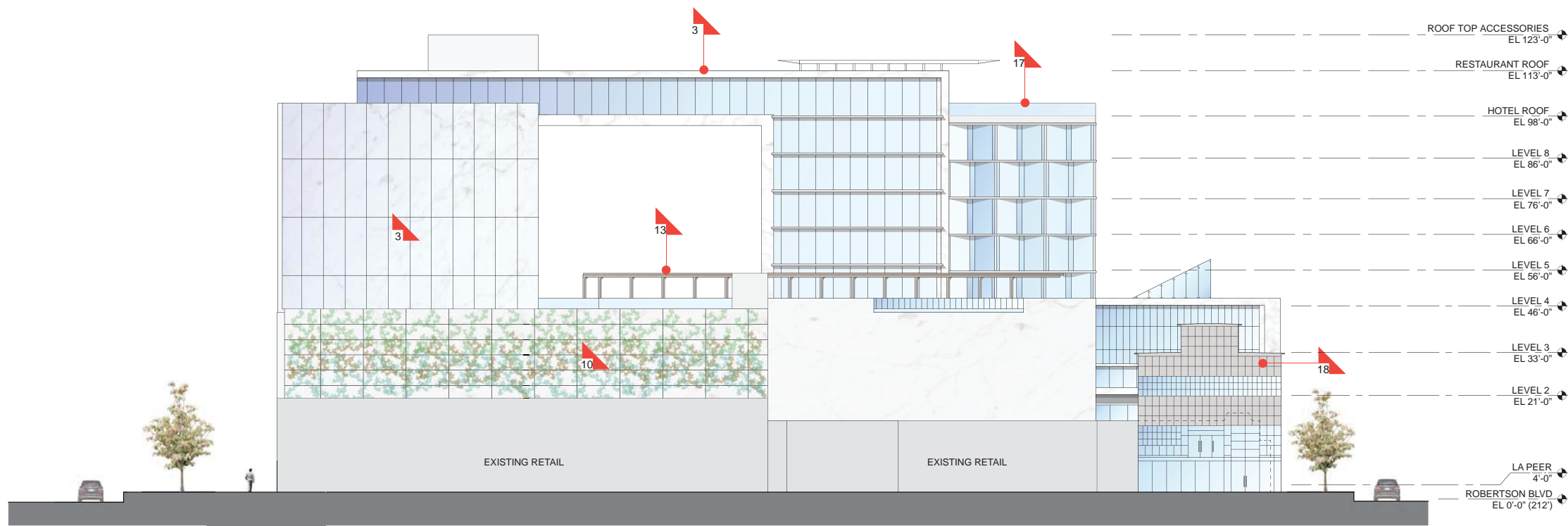
Copyright Hodgett + Fung Design and Architecture.
All rights reserved.

MARK	DATE	DESCRIPTION
	03.28.15	DEVELOPMENT REVISIONS
	04.12.16	DEVELOPMENT REVISIONS

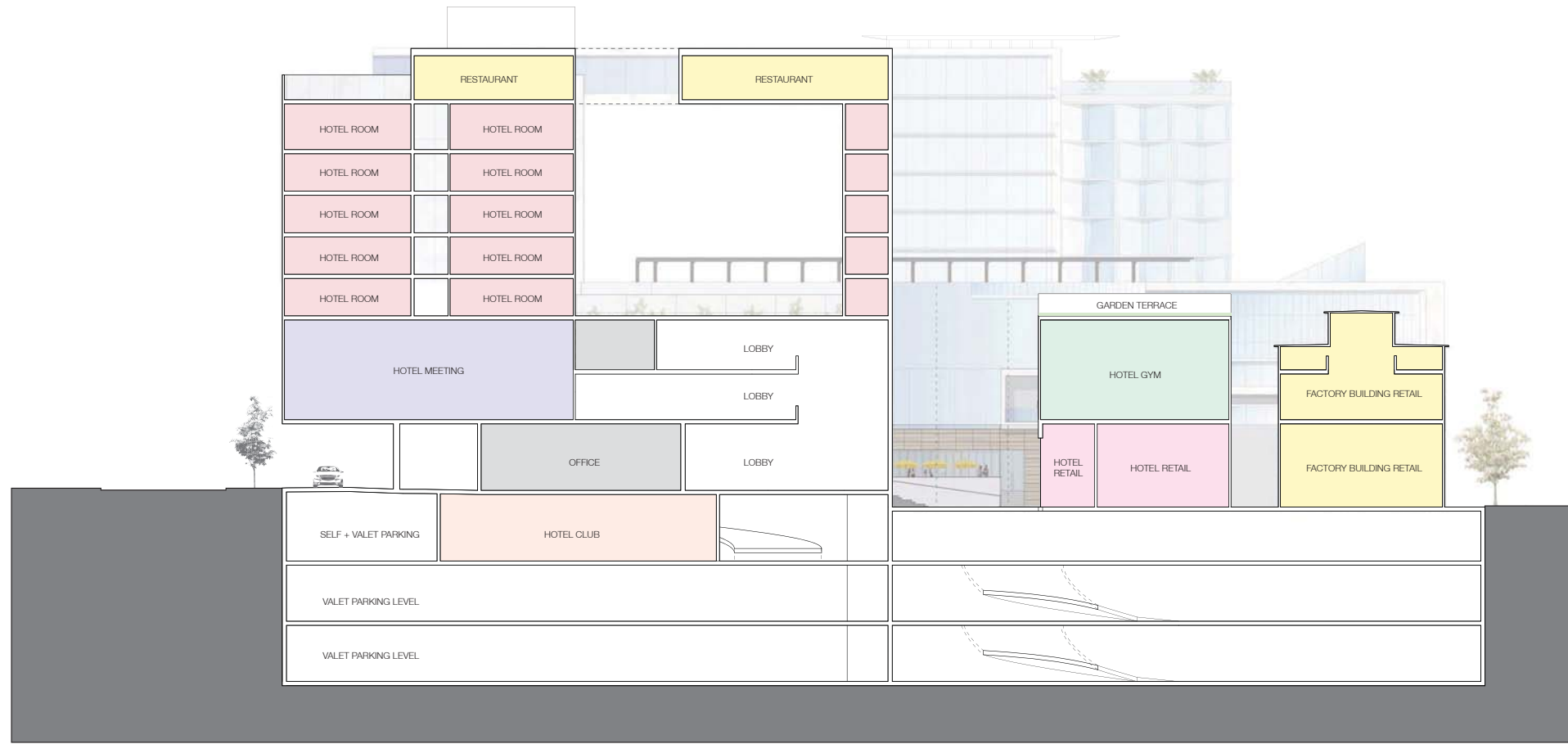
PROJECT NO.	1330
SUBMISSION DATE	06.16.14
SCALE	1/16" = 1'-0"
DRAWN BY	AK
CHECKED BY	DV
DRAWING TITLE	BUILDING ELEVATIONS
DRAWING NO.	A-3.02



2 NORTH ELEVATION
1/16" = 1' - 0"

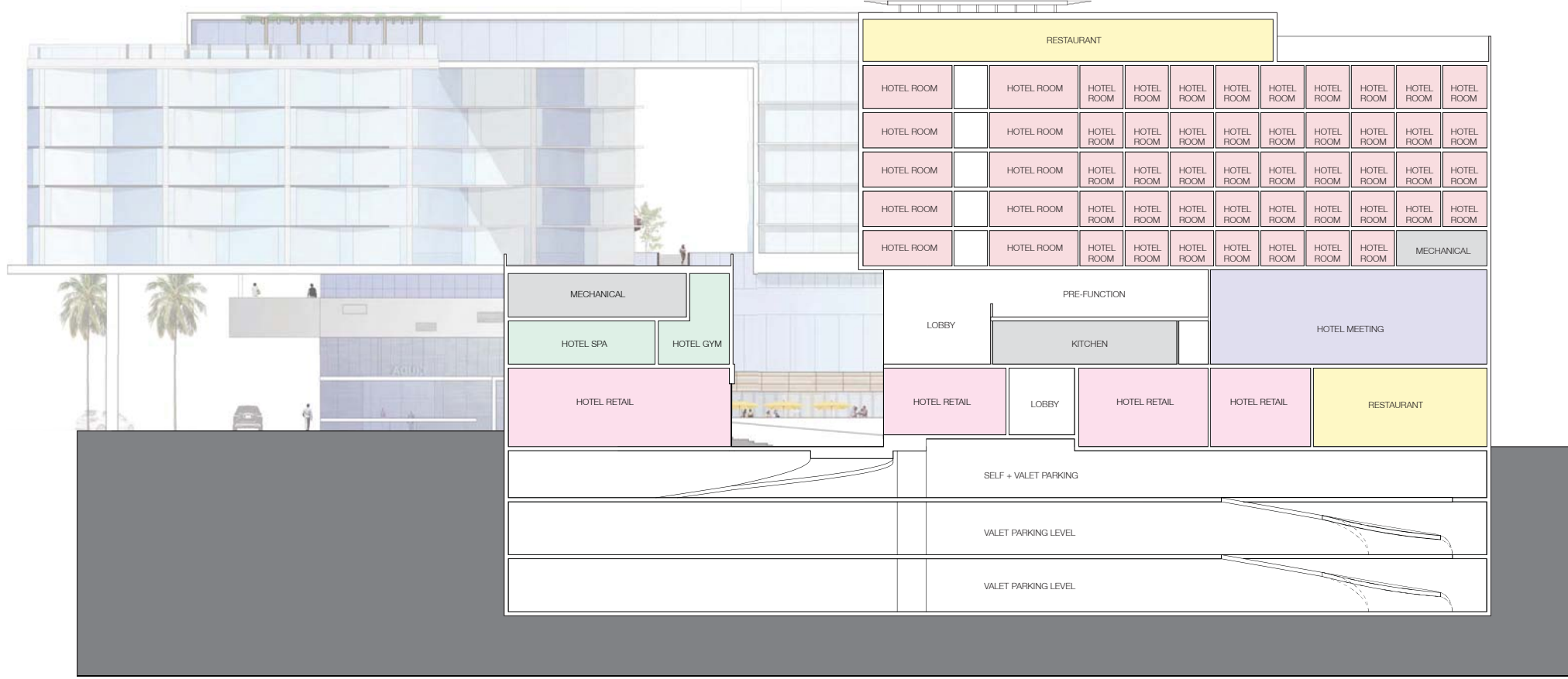


1 SOUTH ELEVATION
1/16" = 1' - 0"



- ROOF TOP ACCESSORIES
EL 123'-0"
- RESTAURANT ROOF
EL 113'-0"
- HOTEL ROOF
EL 98'-0"
- LEVEL 8
EL 86'-0"
- LEVEL 7
EL 76'-0"
- LEVEL 6
EL 66'-0"
- LEVEL 5
EL 56'-0"
- LEVEL 4
EL 46'-0"
- LEVEL 3
EL 33'-0"
- LEVEL 2
EL 21'-0"
- LA PEER 4'-0"
ROBERTSON BLVD
EL. 212'
- P1
EL -13'-0"
- P2
EL -27'-6"
- P3
EL -42'-0"

2 EAST - WEST BUILDING SECTION
1/16" = 1' - 0"



- RESTAURANT ROOF
EL 113'-0"
- HOTEL ROOF
EL 98'-0"
- LEVEL 8
EL 86'-0"
- LEVEL 7
EL 76'-0"
- LEVEL 6
EL 66'-0"
- LEVEL 5
EL 56'-0"
- LEVEL 4
EL 46'-0"
- LEVEL 3
EL 33'-0"
- LEVEL 2
EL 21'-0"
- LA PEER 4'-0"
ROBERTSON BLVD
0'0"
- P1
EL -13'-0"
- P2
EL -27'-6"
- P3
EL -42'-0"

1 NORTH - SOUTH BUILDING SECTION
1/16" = 1' - 0"

CONSULTANT INFORMATION

LANDSCAPE ARCHITECT
AHBE Landscape Architects
617 West Seventh St, Suite 304
Los Angeles, CA, 90017
P: 213 694 3800
F: 213 694 3801
E: cabc@ahbe.com

LIGHTING DESIGN
Horton, Lees, Brogden Lighting Design
8580 Washington Blvd.
Culver City, CA 90232
P: 310 837 0829
F: 310 837 0802
E: taghassian@hlblighting.com

STRUCTURAL
Englekirk
888 S. Figueroa Street, 18th Floor
Los Angeles, CA 90017
P: 323.733.6673
E: vladnk.votnyy@englekirk.com

ROBERTSON LANE
645-681 N. Robertson Boulevard and 648-668 N. La Peer Drive,
West Hollywood, CA 90069

Fairing Capital / Jason Houlahan, Managing Partner
8895 Beverly Blvd, Suite 716 West Hollywood, CA 90048
P: 310-995-7399 E: jason@fairingcapital.com

HODGETTS + FUNG
DESIGN AND ARCHITECTURE

hplusf.

5837 Adams Blvd.
Culver City, CA 90232
3 2 3 . 9 3 7 . 2 1 5 0
mailbox@hplusf.com

REGISTERED ARCHITECT
C-24194
STATE OF CALIFORNIA

The designs, details and specifications contained in this drawing are confidential. The recipients of this drawing hereby acknowledge and agree that it is the sole property of Hodgetts + Fung and that they shall neither use nor reveal any of the designs, details and specifications contained in this drawing, outside of the contractual agreement expressed within permission from Hodgetts + Fung.

Decisions from this drawing shall not be made without consulting Hodgetts + Fung. In case of incongruities between drawings, specifications, and details included in contract documents, Hodgetts + Fung shall decide which instruction must be followed and their decision shall be final.

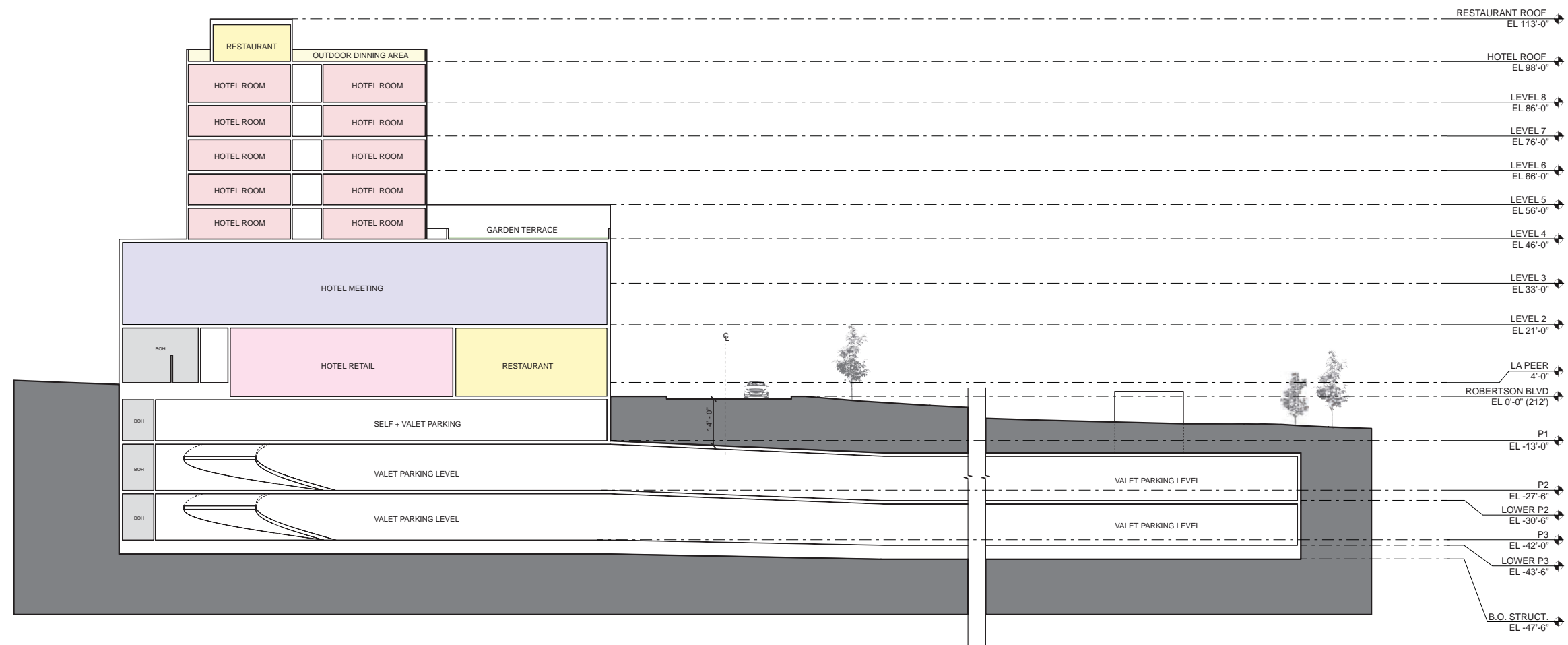
Copyright Hodgetts + Fung Design and Architecture. All rights reserved.

ISSUE NOTES

MARK	DATE	DESCRIPTION
	05.28.15	DEVELOPMENT REVISIONS
	04.12.16	DEVELOPMENT REVISIONS

DRAWING

PROJECT NO.	1330
SUBMISSION	DEVELOPMENT PERMIT
SUB. DATE	05.15.14
SCALE	1/8" = 1'-0"
DRAWN BY	LS
CHECKED BY	DV
DRAWING TITLE	BUILDING SECTIONS
DRAWING NO.	A-3.03



CONSULTANT INFORMATION

LANDSCAPE ARCHITECT
 AHBE Landscape Architects
 617 West Seventh St, Suite 304
 Los Angeles, CA, 90017
 P: 213 694 3800
 F: 213 694 3801
 E: cabc@ahbe.com

LIGHTING DESIGN
 Horton, Lees, Brogden Lighting Design
 8580 Washington Blvd.
 Culver City, CA 90232
 P: 310 837 0829
 F: 310 837 0892
 E: taghassian@hblighting.com

STRUCTURAL
 Englekirk
 888 S. Figueroa Street, 18th Floor
 Los Angeles, CA 90017
 P: 323.733.6673
 E: vladnk.votnyy@englekirk.com

ROBERTSON LANE
 645-681 N. Robertson Boulevard and 648-668 N. La Peer Drive,
 West Hollywood, CA 90069

Fairing Capital / Jason Moulton, Managing Partner
 8895 Beverly Blvd, Suite 716 West Hollywood, CA 90048
 P: 310-995-7399 E: jason@fairingcapital.com

HODGETTS + FUNG
 DESIGN AND ARCHITECTURE

hplusf.com

5837 Adams Blvd.
 Culver City, CA 90232
 3 2 3 . 9 3 7 . 2 1 5 0
 mailbox@hplusf.com

The designs, details and specifications contained in this drawing are confidential. The recipient of this drawing hereby acknowledges and agrees that it is the sole property of Hodgett + Fung and that they shall neither use nor reveal any of the designs, details and specifications contained in this drawing, outside of the contractual agreement expressed within permission from Hodgett + Fung.

Decisions from this drawing shall not be made without consulting Hodgett + Fung. In case of incongruities between drawings, modifications, and details included in contract documents, Hodgett + Fung shall decide which instruction must be followed and their decision shall be final.

Copyright Hodgett + Fung Design and Architecture. All rights reserved.

ISSUE NOTES

MARK	DATE	DESCRIPTION
	05.29.15	DEVELOPMENT REVISIONS
	04.12.16	DEVELOPMENT REVISIONS

DRAWING

PROJECT NO.	1330
SUBMISSION	DEVELOPMENT PERMIT
SUB. DATE	05.15.14
SCALE	1/8" = 1'-0"
DRAWN BY	LS
CHECKED BY	DV
SHEET SIZE	24" x 48"
DRAWING TITLE	BUILDING SECTIONS
DRAWING NO.	A-3.04

1 BUILDING SECTION THROUGH PARKING EXTENSION
 1/16" = 1' - 0"

LANDSCAPE ARCHITECT
 AHBE Landscape Architects
 617 West Seventh St, Suite 304
 Los Angeles, CA 90017
 P: 213 694 3801
 F: 213 694 3801
 E: cabei@ahbe.com

LIGHTING DESIGN
 Horton, Lees, Brogden Lighting Design
 6580 Washington Blvd.
 Culver City, CA 90232
 P: 310 837 0929
 F: 310 837 0902
 E: taghassan@hblighting.com

STRUCTURAL
 Englekirk
 888 S. Figueroa Street, 18th Floor
 Los Angeles, CA 90017
 P: 323.733.6673
 E: vladimk.volnyy@englekirk.com

ROBERTSON LANE
 645-681 N. Robertson Boulevard and 648-668 N. La Peer Drive.
 West Hollywood, CA 90069

Faring Capital // Jason Moulton, Managing Partner
 8899 Beverly Blvd., Suite 716 West Hollywood, CA 90048
 P: 310-995-7399 E: jason@faringcapital.com

HODGETTS + FUNG
 DESIGN AND ARCHITECTURE

hplusf.com

5837 Adams Blvd.
 Culver City, CA 90232
 3 2 3 . 9 3 7 . 2 1 5 0
 mailbox@hplusf.com



The designs, details and specifications contained in this drawing are confidential. The recipients of this drawing hereby acknowledge and agree that it is the sole property of Hodgetts + Fung and that they shall neither use nor reveal any of the designs, details and specifications contained in this drawing, outside of the contractual agreement expressed without permission from Hodgetts + Fung.

Deviations from this drawing shall not be made without consulting Hodgetts + Fung. In case of discrepancies between drawings, specifications, and details included in contract documents, Hodgetts + Fung shall decide which instruction must be followed and their decision shall be final.

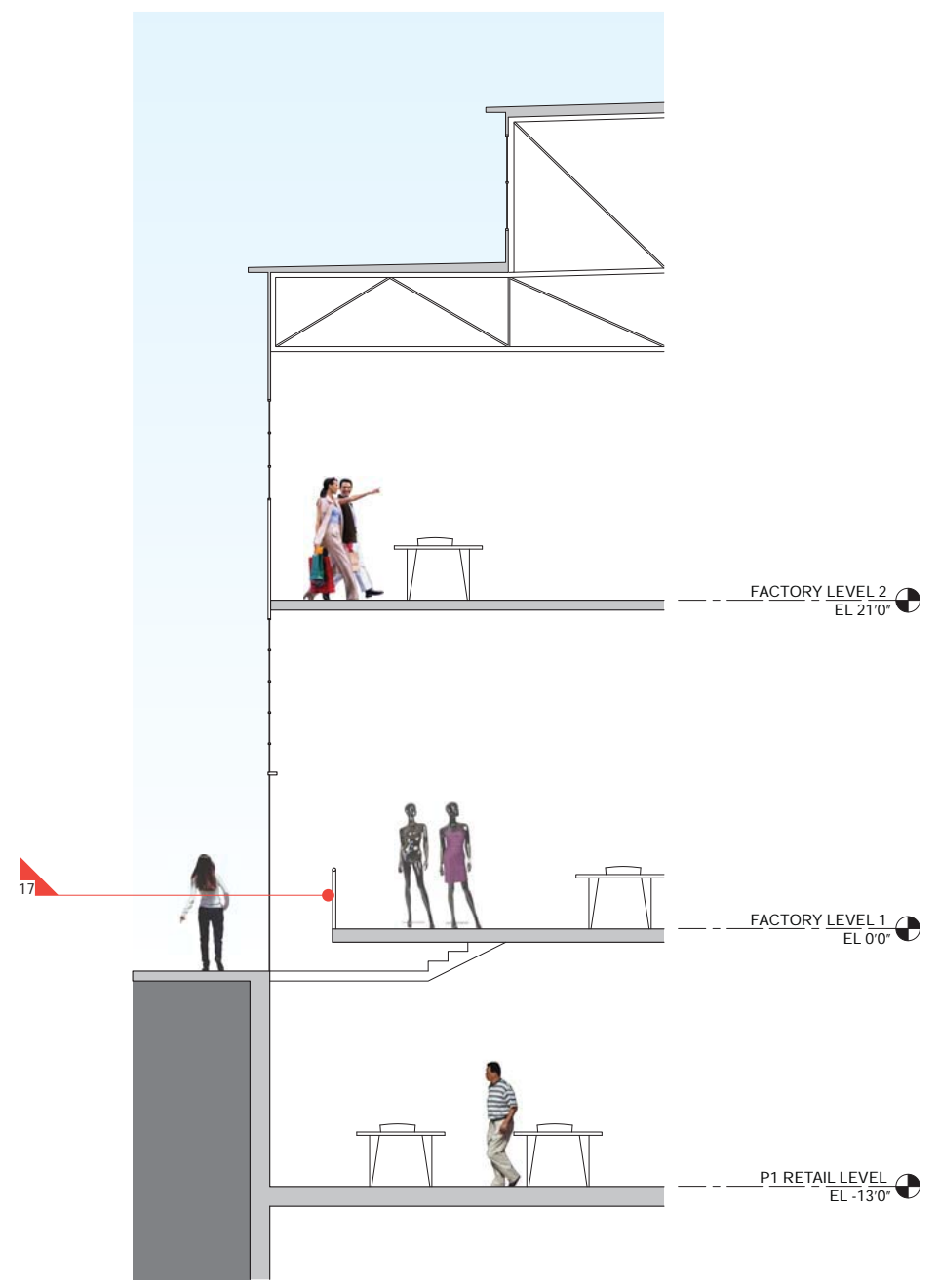
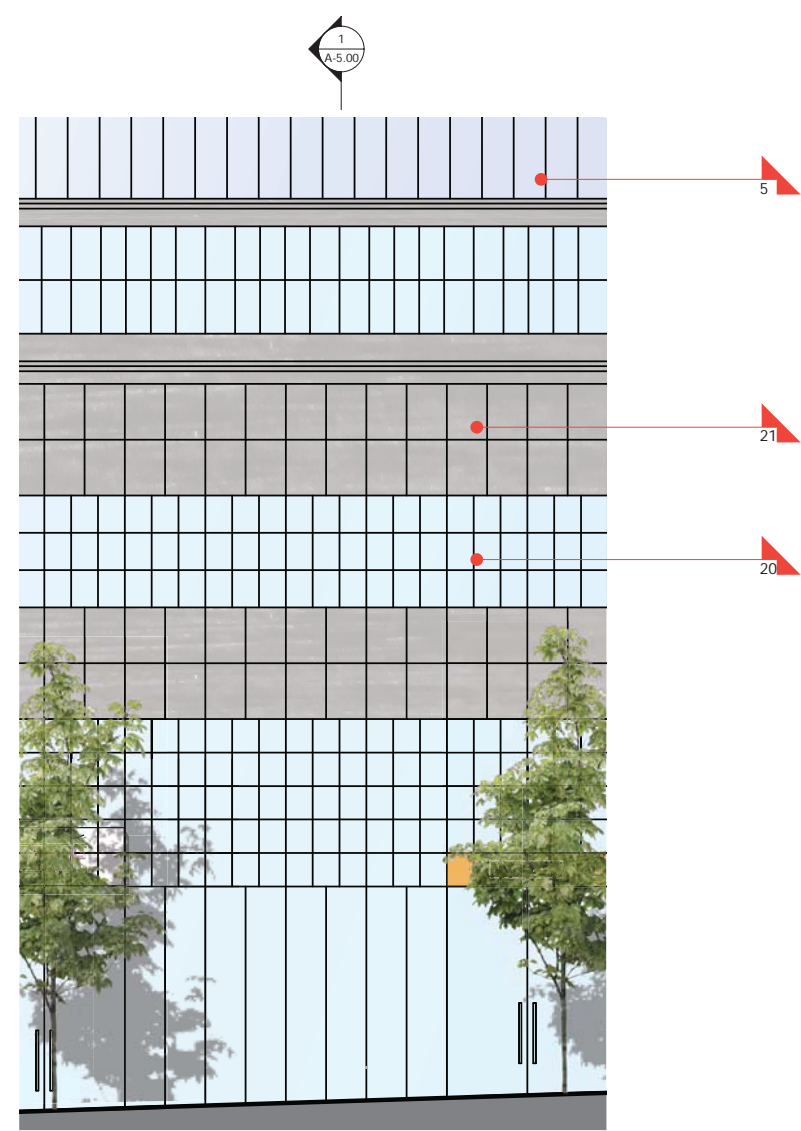
Copyright Hodgetts + Fung Design and Architecture.
 All rights reserved.

MARK	DATE	DESCRIPTION
	02.29.15	DEVELOPMENT REVISIONS
		DEVELOPMENT REVISIONS

PROJECT NO.	1330
SUBMISSION	DEVELOPMENT PERMIT
ISSUE DATE	06.16.14
SCALE	1/4" = 1'-0"
DRAWN BY	AK
CHECKED BY	DV
DRAWING TITLE	WALL SECTIONS
DRAWING NO.	A-5.00

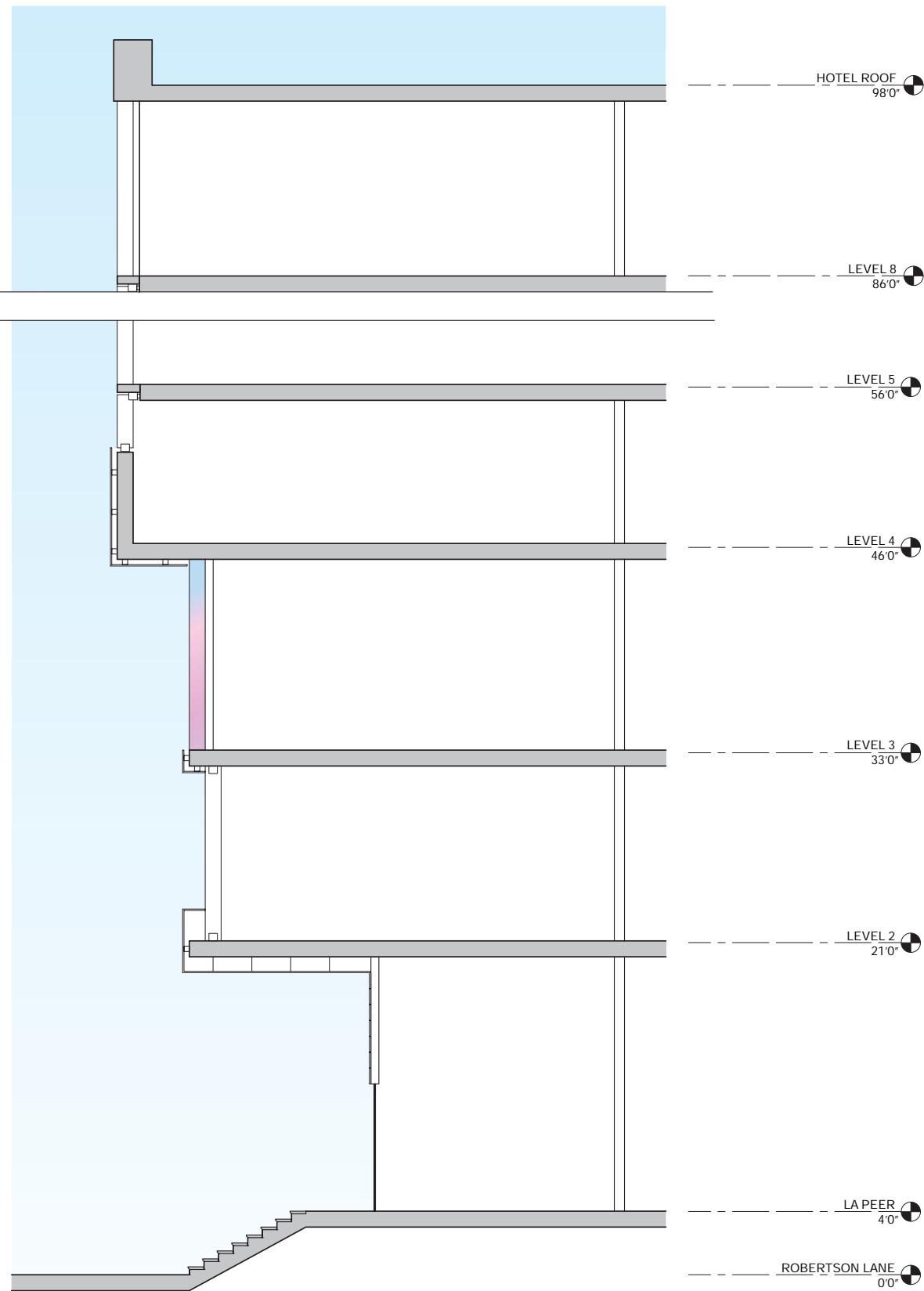
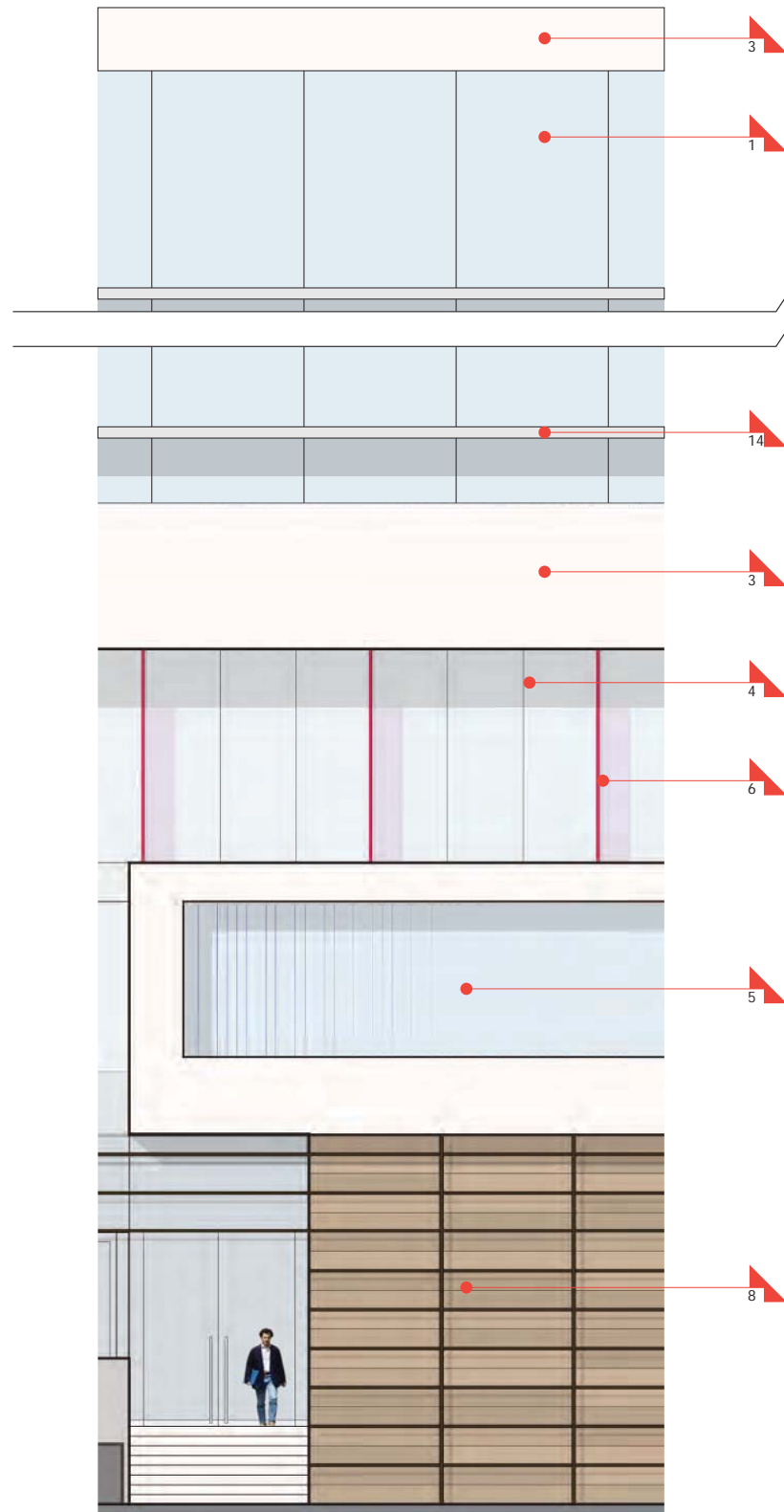
MATERIAL LEGEND

- 1 LOW-E GLASS W/ CERAMIC FRIT
- 2 BRONZE ANODIZED ALUM. WINDOW WALL
- 3 MARBLE TILE
- 4 BRONZE ANODIZED POINT SUPPORT WINDOW WALL
- 5 CHANNEL GLASS
- 6 DICHROIC GLASS LOUVER
- 7 PAINTED METAL CLADDING
- 8 ENGINEERED WOOD CLADDING
- 9 FIBER CEMENT CLADDING
- 10 MODULAR GREEN WALL SYSTEM
- 11 ANODIZED ALUMINUM STOREFRONT SYSTEM
- 12 SAND SMOOTH ACRYLIC PLASTER
- 13 TIMBER LATTICE
- 14 CAST-IN-PLACE CONCRETE
- 15 STAINLESS STEEL
- 16 WOOD SLATS
- 17 POINT SUPPORT GLASS GUARDRAIL
- 18 PAINTED STEEL
- 19 BUTT-GLAZED STOREFRONT SYSTEM
- 20 REFURBISHED STEEL FACTORY SASH
- 21 EMBOSSED METAL PANEL, PTD.



2 ENLARGED ELEVATION
 1/4" = 1'-0"

1 ENLARGED WALL SECTION
 1/4" = 1'-0"



MATERIAL LEGEND

- 1 LOW-E GLASS W/ CERAMIC FRIT
- 2 BRONZE ANODIZED ALUM. WINDOW WALL
- 3 MARBLE TILE
- 4 BRONZE ANODIZED POINT SUPPORT WINDOW WALL
- 5 CHANNEL GLASS
- 6 DICHROIC GLASS LOUVER
- 7 PAINTED METAL CLADDING
- 8 ENGINEERED WOOD CLADDING
- 9 FIBER CEMENT CLADDING
- 10 MODULAR GREEN WALL SYSTEM
- 11 ANODIZED ALUMINUM STOREFRONT SYSTEM
- 12 SAND SMOOTH ACRYLIC PLASTER
- 13 TIMBER LATTICE
- 14 CAST-IN-PLACE CONCRETE
- 15 STAINLESS STEEL
- 16 WOOD SLATS
- 17 POINT SUPPORT GLASS GUARDRAIL
- 18 PAINTED STEEL

CONSULTANT INFORMATION

LANDSCAPE ARCHITECT
 AHBE Landscape Architects
 617 West Seventh St, Suite 304
 Los Angeles, CA 90017
 P: 213 694 3801
 F: 213 694 3801
 E: cabei@ahbe.com

LIGHTING DESIGN
 Horton, Lees, Brogden Lighting Design
 6580 Washington Blvd.
 Culver City, CA 90232
 P: 310 837 0929
 F: 310 837 0902
 E: taghassian@hblighting.com

STRUCTURAL
 Englekirk
 888 S. Figueroa Street, 18th Floor
 Los Angeles, CA 90017
 P: 323.733.6673
 E: vladim.volnyy@englekirk.com

ROBERTSON LANE
 645-681 N. Robertson Boulevard and 648-668 N. La Peer Drive.
 West Hollywood, CA 90069

Faring Capital // Jason Moulton, Managing Partner
 8899 Beverly Blvd., Suite 716 West Hollywood, CA 90048
 P: 310-995-7399 E: jason@faringcapital.com

HODGETTS + FUNG
 DESIGN AND ARCHITECTURE

hplusf.com

5837 Adams Blvd.
 Culver City, CA 90232
 3 2 3 . 9 3 7 . 2 1 5 0
 mailbox@hplusf.com



The designs, details and specifications contained in this drawing are confidential. The recipients of this drawing hereby acknowledge and agree that it is the sole property of Hodgetts + Fung and that they shall neither use nor reveal any of the designs, details and specifications contained in this drawing, outside of the contractual agreement expressed without permission from Hodgetts + Fung.

Deviations from this drawing shall not be made without consulting Hodgetts + Fung. In case of discrepancies between drawings, specifications, and details included in contract documents, Hodgetts + Fung shall decide which deviation must be followed and their decision shall be final.

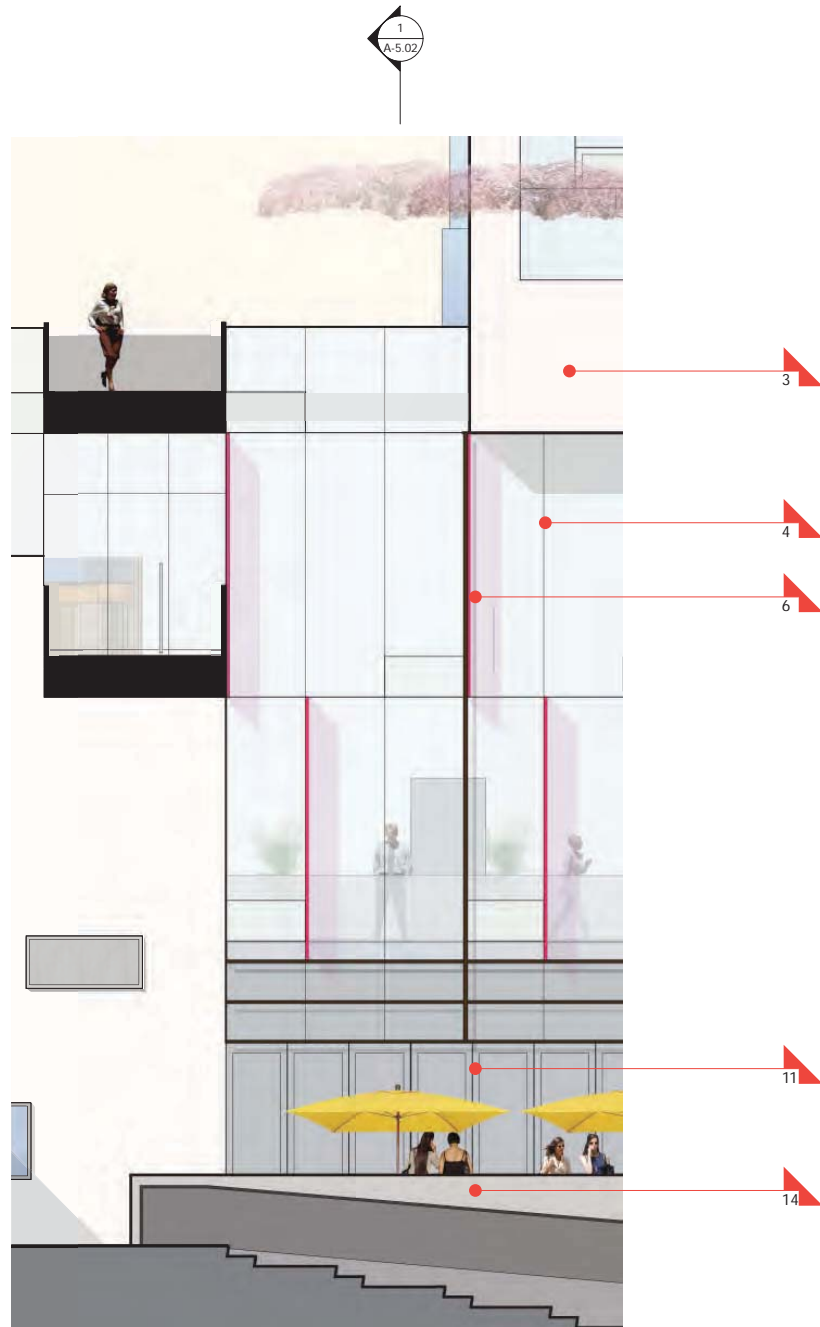
Copyright Hodgetts + Fung Design and Architecture.
 All rights reserved.

MARK	DATE	DESCRIPTION
	08.28.15	DEVELOPMENT REVISIONS
	08.12.15	DEVELOPMENT REVISIONS

PROJECT NO.	1330
SUBMISSION DATE	DEVELOPMENT PERMIT
DATE	06.16.14
SCALE	1/16" = 1'-0"
DRAWN BY	AK
CHECKED BY	DV SHEET SIZE: 30" x 40"
DRAWING TITLE	WALL SECTIONS
DRAWING NO.	A-5.01

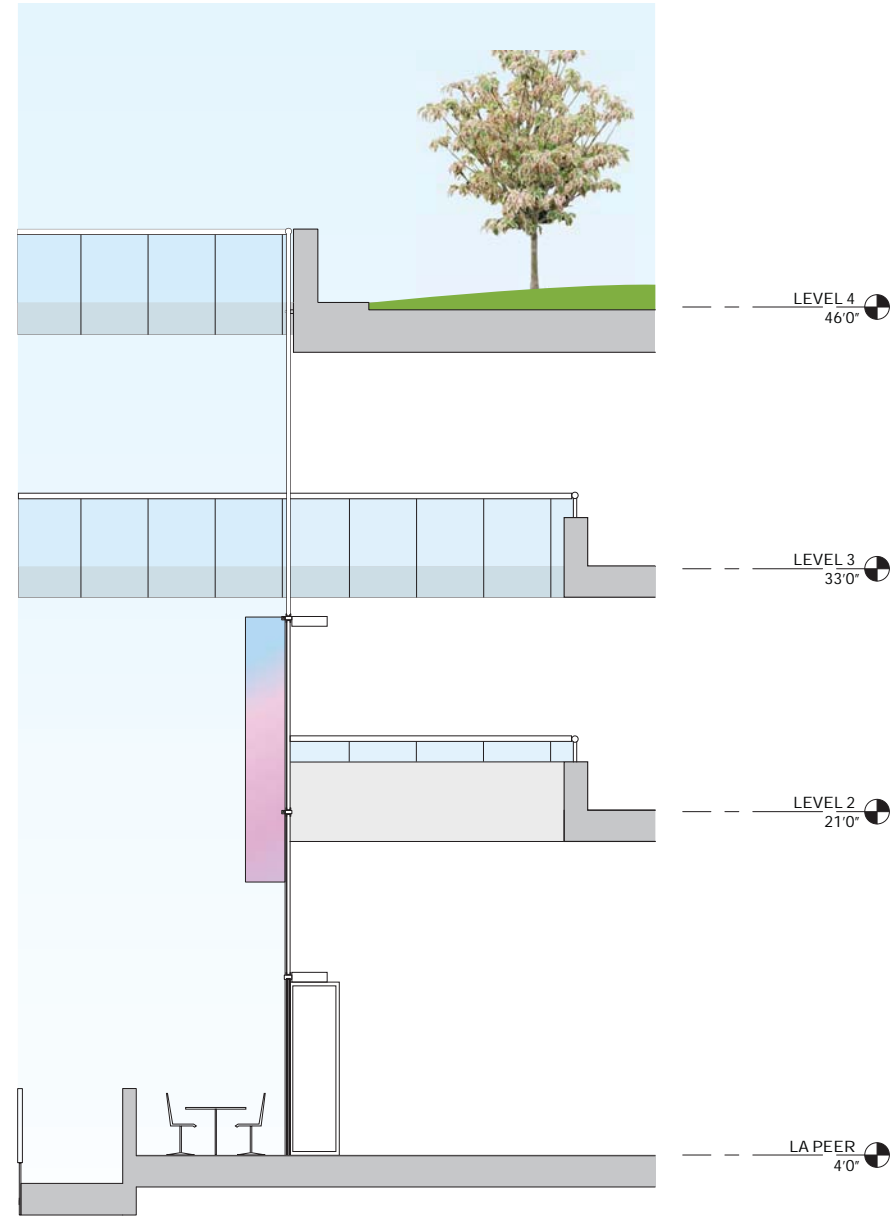
2 ENLARGED ELEVATION
 1/4" = 1' - 0"

1 ENLARGED WALL SECTION
 1/4" = 1' - 0"



2

ENLARGED ELEVATION
1/4" = 1' - 0"



1

ENLARGED WALL SECTION
1/4" = 1' - 0"

MATERIAL LEGEND

- 1 LOW-E GLASS W/ CERAMIC FRIT
- 2 BRONZE ANODIZED ALUM. WINDOW WALL
- 3 MARBLE TILE
- 4 BRONZE ANODIZED POINT SUPPORT WINDOW WALL
- 5 CHANNEL GLASS
- 6 DICHROIC GLASS LOUVER
- 7 PAINTED METAL CLADDING
- 8 ENGINEERED WOOD CLADDING
- 9 FIBER CEMENT CLADDING
- 10 MODULAR GREEN WALL SYSTEM
- 11 ANODIZED ALUMINUM STOREFRONT SYSTEM
- 12 SAND SMOOTH ACRYLIC PLASTER
- 13 TIMBER LATTICE
- 14 CAST-IN-PLACE CONCRETE
- 15 STAINLESS STEEL
- 16 WOOD SLATS
- 17 POINT SUPPORT GLASS GUARDRAIL
- 18 PAINTED STEEL

CONSULTANT INFORMATION

LANDSCAPE ARCHITECT
AHBE Landscape Architects
617 West Seventh St, Suite 304
Los Angeles, CA 90017
P: 213 694 3800
F: 213 694 3801
E: cabei@ahbe.com

LIGHTING DESIGN
Horton, Lees, Brogden Lighting Design
Culver City, CA 90232
P: 310 837 0929
F: 310 837 0902
E: taghassian@hblighting.com

STRUCTURAL
Englekirk
888 S. Figueroa Street, 18th Floor
Los Angeles, CA 90017
P: 323.733.6673
E: vladimk.volnyy@englekirk.com

ROBERTSON LANE

645-681 N. Robertson Boulevard and 648-668 N. La Peer Drive.
West Hollywood, CA 90069

Faring Capital // Jason Moulton, Managing Partner
8899 Beverly Blvd., Suite 716 West Hollywood, CA 90048
P: 310-995-7399 E: jason@faringcapital.com

HODGETTS + FUNG

DESIGN AND ARCHITECTURE

hplusf.com

5837 Adams Blvd.
Culver City, CA 90232
323.937.2150
mailbox@hplusf.com



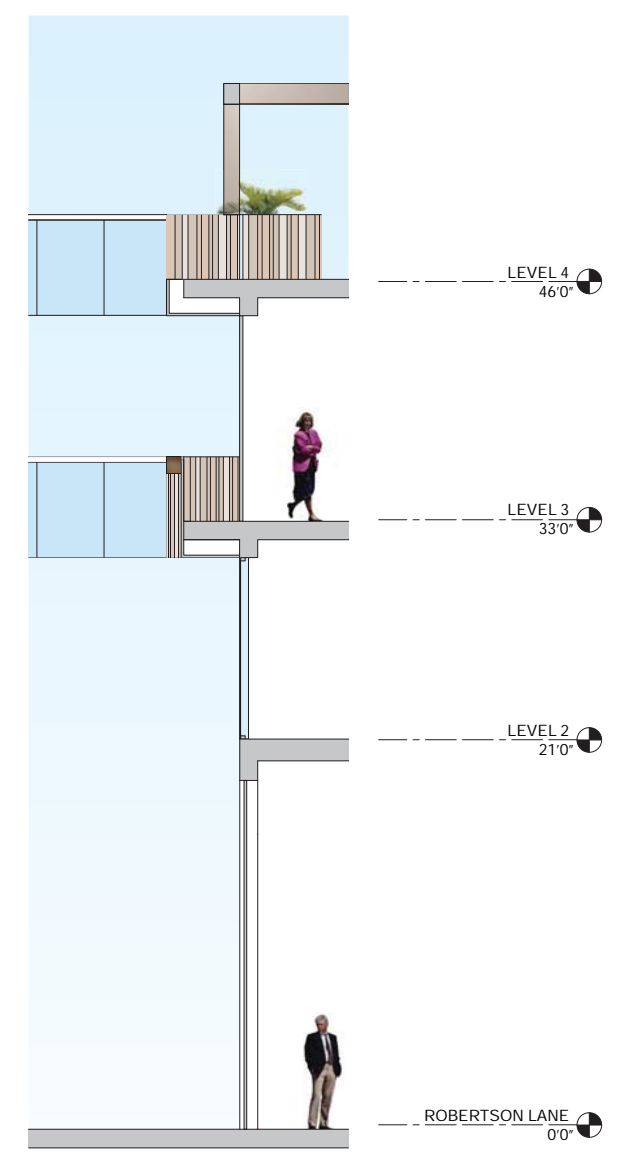
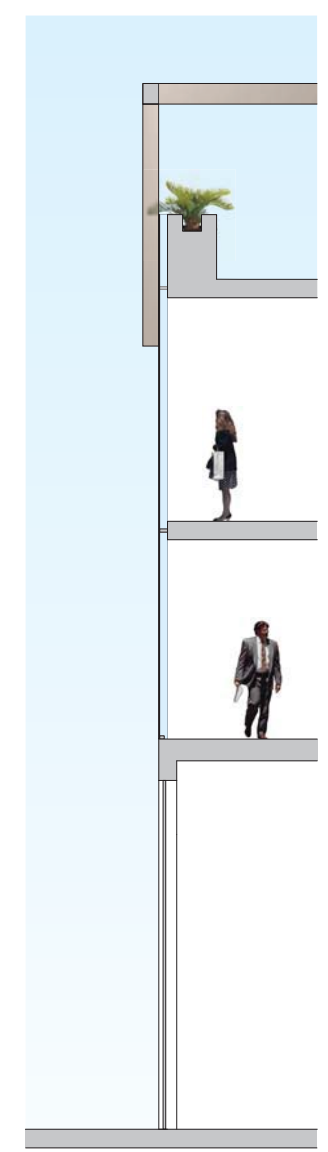
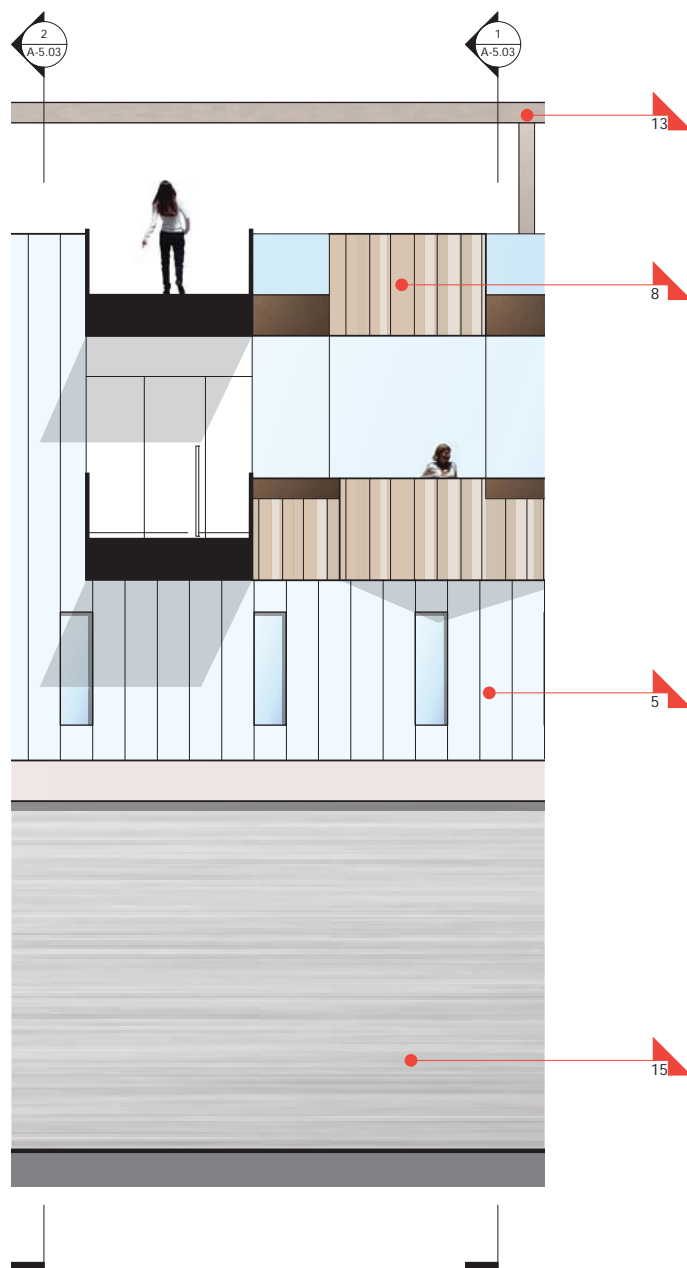
The designs, details and specifications contained in this drawing are confidential. The recipients of this drawing hereby acknowledge and agree that it is the sole property of Hodgetts + Fung and that they shall neither use nor reveal any of the designs, details and specifications contained in this drawing, outside of the contractual agreement expressed without permission from Hodgetts + Fung.

Deviations from this drawing shall not be made without consulting Hodgetts + Fung. In case of discrepancies between drawings, specifications, and details included in contract documents, Hodgetts + Fung shall decide which deviation must be followed and their decision shall be final.

Copyright Hodgetts + Fung Design and Architecture. All rights reserved.

MARK	DATE	DESCRIPTION
	08.28.15	DEVELOPMENT REVISIONS
	09.13.15	DEVELOPMENT REVISIONS

PROJECT NO.	1330
SUBMISSION	DEVELOPMENT PERMIT
SUB. DATE	06.16.14
SCALE	1/16" = 1'-0"
DRAWN BY	AK
CHECKED BY	DV SHEET SIZE: 30" x 40"
DRAWING TITLE	WALL SECTIONS
DRAWING NO.	A-5.02



MATERIAL LEGEND

- 1 LOW-E GLASS W/ CERAMIC FRIT
- 2 BRONZE ANODIZED ALUM. WINDOW WALL
- 3 MARBLE TILE
- 4 BRONZE ANODIZED POINT SUPPORT WINDOW WALL
- 5 CHANNEL GLASS
- 6 DICHROIC GLASS LOUVER
- 7 PAINTED METAL CLADDING
- 8 ENGINEERED WOOD CLADDING
- 9 FIBER CEMENT CLADDING
- 10 MODULAR GREEN WALL SYSTEM
- 11 ANODIZED ALUMINUM STOREFRONT SYSTEM
- 12 SAND SMOOTH ACRYLIC PLASTER
- 13 TIMBER LATTICE
- 14 CAST-IN-PLACE CONCRETE
- 15 STAINLESS STEEL
- 16 WOOD SLATS
- 17 POINT SUPPORT GLASS GUARDRAIL
- 18 PAINTED STEEL

CONSULTANT INFORMATION

LANDSCAPE ARCHITECT
 AHBE Landscape Architects
 617 West Seventh St, Suite 304
 Los Angeles, CA 90017
 P: 213 694 3800
 F: 213 694 3801
 E: cabei@ahbe.com

LIGHTING DESIGN
 Horton, Lees, Brogden Lighting Design
 6580 Washington Blvd.
 Culver City, CA 90232
 P: 310 837 0929
 F: 310 837 0902
 E: taghassan@hblighting.com

STRUCTURAL
 Englekirk
 888 S. Figueroa Street, 18th Floor
 Los Angeles, CA 90017
 P: 323.733.6673
 E: vladimk.volnyy@englekirk.com

ROBERTSON LANE
 645-681 N. Robertson Boulevard and 648-688 N. La Peer Drive.
 West Hollywood, CA 90069

Faring Capital // Jason Moulton, Managing Partner
 8889 Beverly Blvd., Suite 716 West Hollywood, CA 90048
 P: 310-985-7389 E: jason@faringcapital.com

HODGETTS + FUNG
 DESIGN AND ARCHITECTURE

hplusf.com

5837 Adams Blvd.
 Culver City, CA 90232
 3 2 3 . 9 3 7 . 2 1 5 0
 mailbox@hplusf.com



The designs, details and specifications contained in this drawing are confidential. The recipients of this drawing hereby acknowledge and agree that it is the sole property of Hodgetts + Fung and that they shall neither use nor reveal any of the designs, details and specifications contained in this drawing, outside of the contractual agreement expressed without permission from Hodgetts + Fung.

Decisions from this drawing shall not be made without consulting Hodgetts + Fung. In case of discrepancies between drawings, specifications, and details included in contract documents, Hodgetts + Fung shall decide which instruction must be followed and their decision shall be final.

Copyright Hodgetts + Fung Design and Architecture.
 All rights reserved.

ISSUE NOTES

MARK	DATE	DESCRIPTION
	08.26.15	DEVELOPMENT REVISIONS
	08.13.16	DEVELOPMENT REVISIONS

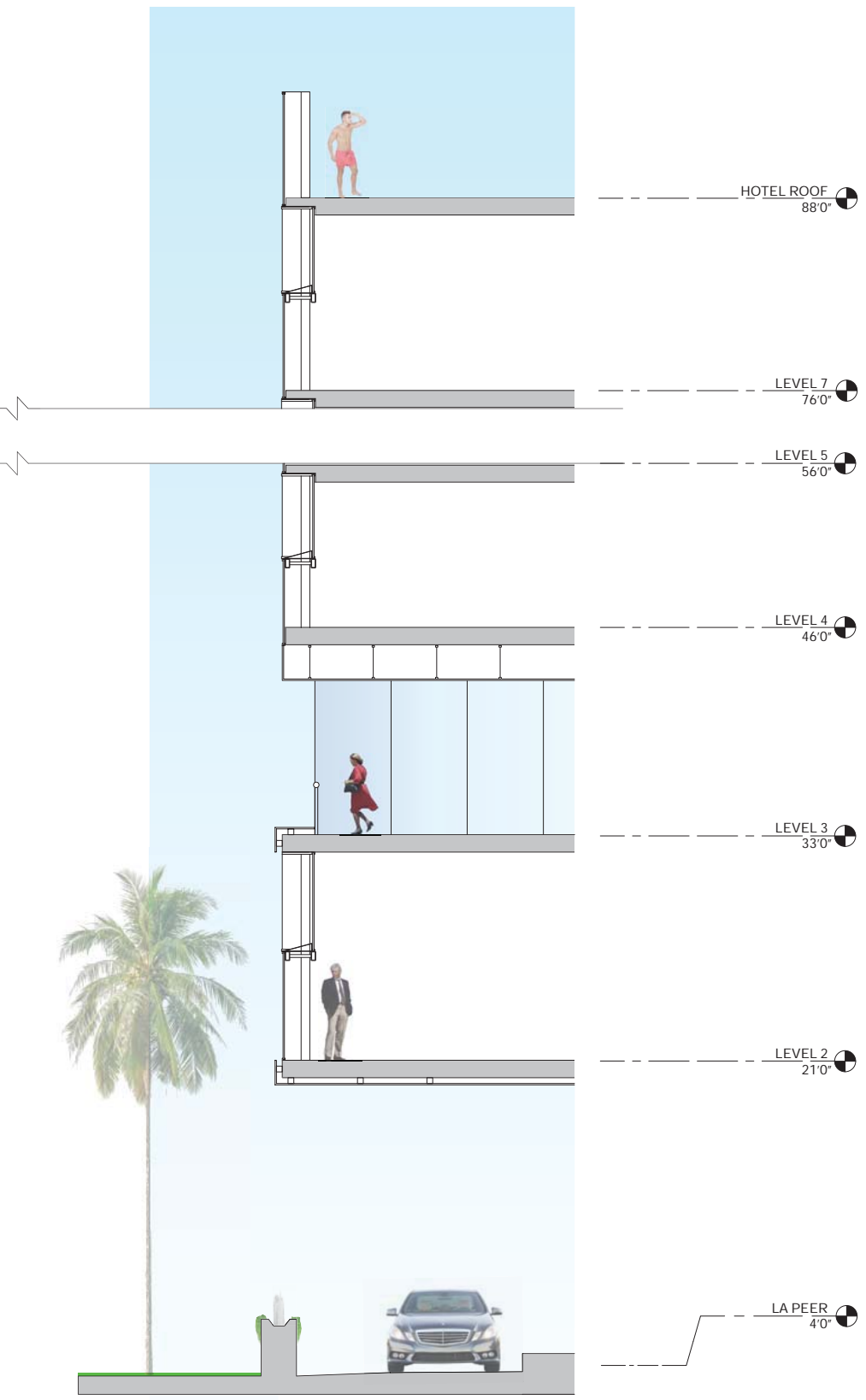
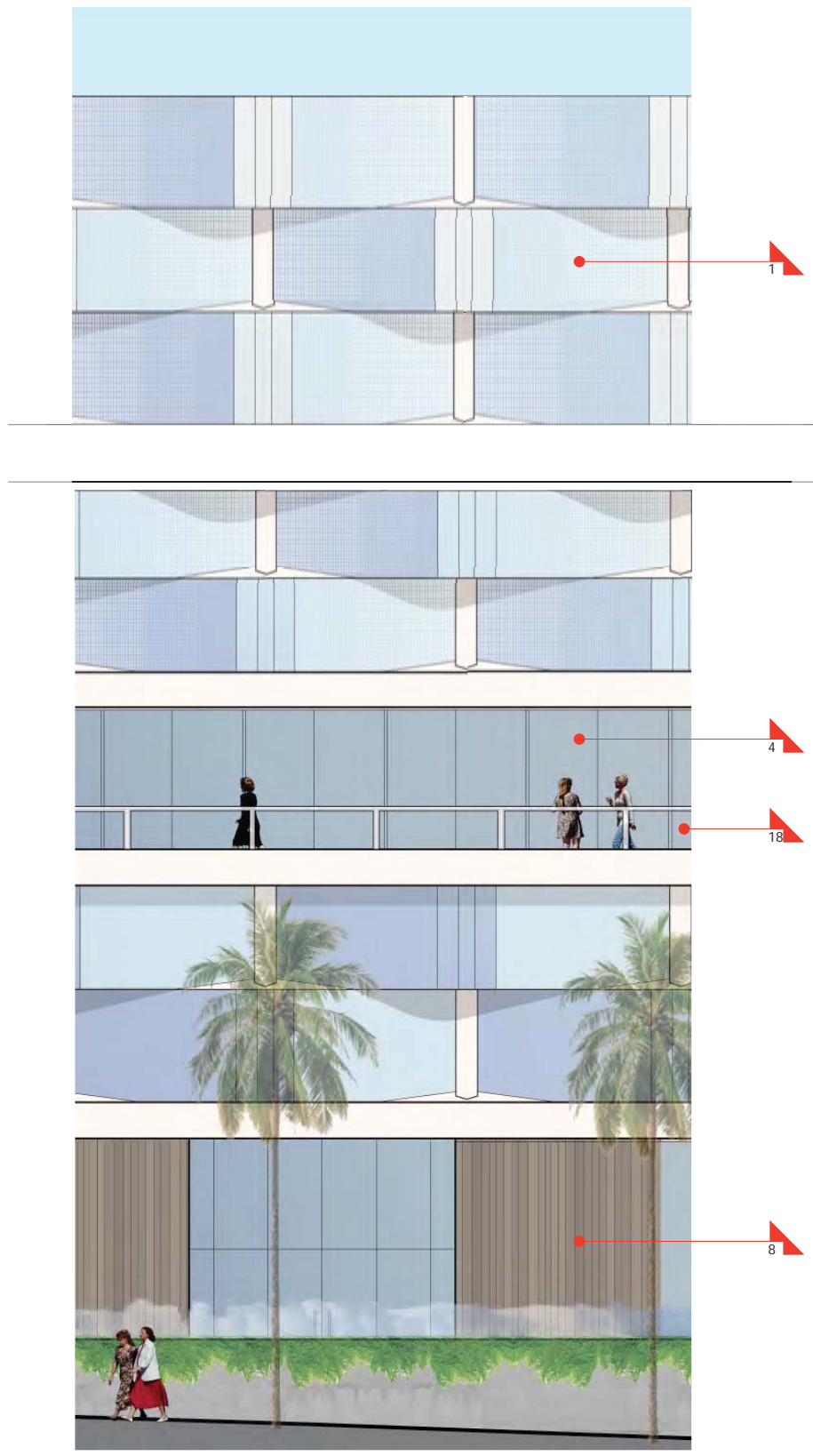
DRAWING

PROJECT NO.	1330
SUBMISSION	DEVELOPMENT PERMIT
ISSUE DATE	08.16.14
SCALE	1/16" = 1'-0"
DRAWN BY	AK
CHECKED BY	DV
SHEET SIZE	30" x 40"
DRAWING TITLE	WALL SECTIONS
DRAWING NO.	A-5.03

3 ENLARGED ELEVATION
 1/4" = 1' - 0"

2 ENLARGED WALL SECTION
 1/4" = 1' - 0"

1 ENLARGED WALL SECTION
 1/4" = 1' - 0"



MATERIAL LEGEND

- 1 LOW-E GLASS W/ CERAMIC FRIT
- 2 BRONZE ANODIZED ALUM. WINDOW WALL
- 3 MARBLE TILE
- 4 BRONZE ANODIZED POINT SUPPORT WINDOW WALL
- 5 CHANNEL GLASS
- 6 DICHROIC GLASS LOUVER
- 7 PAINTED METAL CLADDING
- 8 ENGINEERED WOOD CLADDING
- 9 FIBER CEMENT CLADDING
- 10 MODULAR GREEN WALL SYSTEM
- 11 ANODIZED ALUMINUM STOREFRONT SYSTEM
- 12 SAND SMOOTH ACRYLIC PLASTER
- 13 TIMBER LATTICE
- 14 CAST-IN-PLACE CONCRETE
- 15 STAINLESS STEEL
- 16 WOOD SLATS
- 17 POINT SUPPORT GLASS GUARDRAIL
- 18 PAINTED STEEL

CONSULTANT INFORMATION
 LANDSCAPE ARCHITECT
 AHBE Landscape Architects
 617 West Seventh St, Suite 304
 Los Angeles, CA 90017
 P: 213 694 3801
 F: 213 694 3801
 E: cabei@ahbe.com

LIGHTING DESIGN
 Horton, Lees, Brogden Lighting Design
 6580 Washington Blvd.
 Culver City, CA 90232
 P: 310 837 0929
 F: 310 837 0902
 E: taghassan@hblighting.com

STRUCTURAL
 Englekirk
 888 S. Figueroa Street, 18th Floor
 Los Angeles, CA 90017
 P: 323,733,6673
 E: vladim.volnyy@englekirk.com

ROBERTSON LANE

645-681 N. Robertson Boulevard and 648-668 N. La Peer Drive.
 West Hollywood, CA 90069
 Faring Capital // Jason Moulton, Managing Partner
 8899 Beverly Blvd., Suite 716 West Hollywood, CA 90048
 P: 310-995-7399 E: jason@faringcapital.com

HODGETTS + FUNG
 DESIGN AND ARCHITECTURE
hplusf.com
 5837 Adams Blvd.
 Culver City, CA 90232
 323.937.2150
 mailbox@hplusf.com



The designs, details and specifications contained in this drawing are confidential. The recipients of this drawing hereby acknowledge and agree that it is the sole property of Hodgetts + Fung and that they shall neither use nor reveal any of the designs, details and specifications contained in this drawing, outside of the contractual agreement expressed within permission from Hodgetts + Fung.
 Deviations from this drawing shall not be made without consulting Hodgetts + Fung. In case of discrepancies between drawings, specifications, and details included in contract documents, Hodgetts + Fung shall decide which instruction must be followed and their decision shall be final.
 Copyright Hodgetts + Fung Design and Architecture.
 All rights reserved.

ISSUE NOTES

MARK	DATE	DESCRIPTION
	08.28.15	DEVELOPMENT REVISIONS
	08.13.15	DEVELOPMENT REVISIONS

DRAWING

PROJECT NO.	1330
SUBMISSION	DEVELOPMENT PERMIT
ISSUE DATE	08.15.14
SCALE	1/4" = 1'-0"
DRAWN BY	AK
CHECKED BY	DV SHEET SIZE: 30" x 48"
DRAWING TITLE	WALL SECTIONS
DRAWING NO.	A-5.04

2 ENLARGED ELEVATION
 1/4" = 1'-0"

1 ENLARGED WALL SECTION
 1/4" = 1'-0"