

LANDSCAPE ARCHITECT
 AHBE Landscape Architects
 617 West Seventh St, Suite 304
 Los Angeles, CA 90017
 P: 213 694 3801
 F: 213 694 3801
 E: cabei@ahbe.com

LIGHTING DESIGN
 Horton, Lees, Brogden Lighting Design
 6580 Washington Blvd.
 Culver City, CA 90232
 P: 310 837 0929
 F: 310 837 0902
 E: taghassan@hblighting.com

STRUCTURAL
 Englekirk
 888 S. Figueroa Street, 18th Floor
 Los Angeles, CA 90017
 P: 323.733.6673
 E: vladimk.volnyy@englekirk.com

ROBERTSON LANE
 645-681 N. Robertson Boulevard and 648-668 N. La Peer Drive.
 West Hollywood, CA 90069

Faring Capital // Jason Moulton, Managing Partner
 8899 Beverly Blvd., Suite 716 West Hollywood, CA 90048
 P: 310-995-7399 E: jason@faringcapital.com

HODGETTS + FUNG
 DESIGN AND ARCHITECTURE
hplusf
 5837 Adams Blvd.
 Culver City, CA 90232
 323.937.2150
 mailbox@hplusf.com



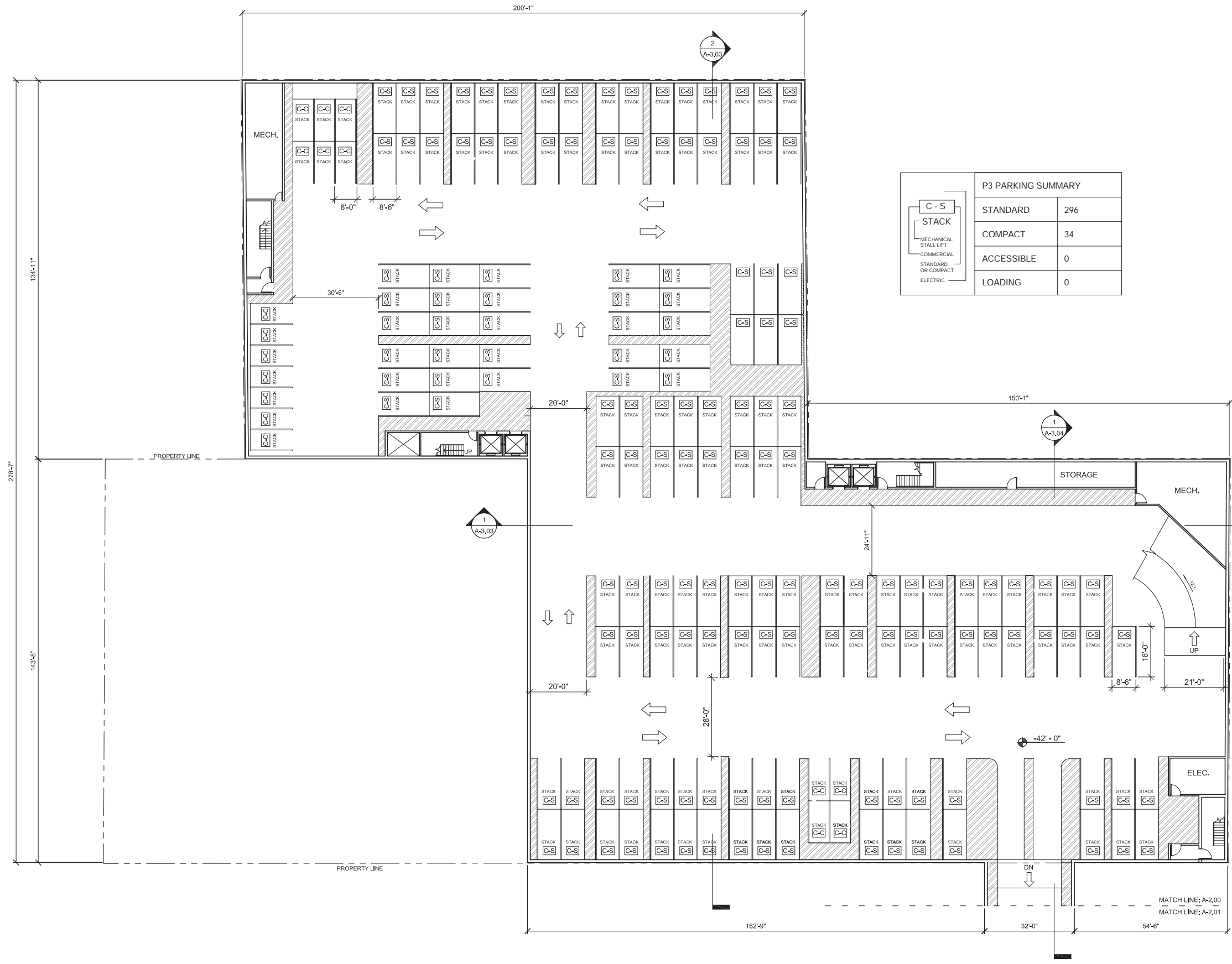
The designs, details and specifications contained in this drawing are confidential. The recipients of this drawing hereby acknowledge and agree that it is the sole property of Hodgetts + Fung and that they shall neither use nor reveal any of the designs, details and specifications contained in this drawing outside of the contractual agreement expressed within permission from Hodgetts + Fung.

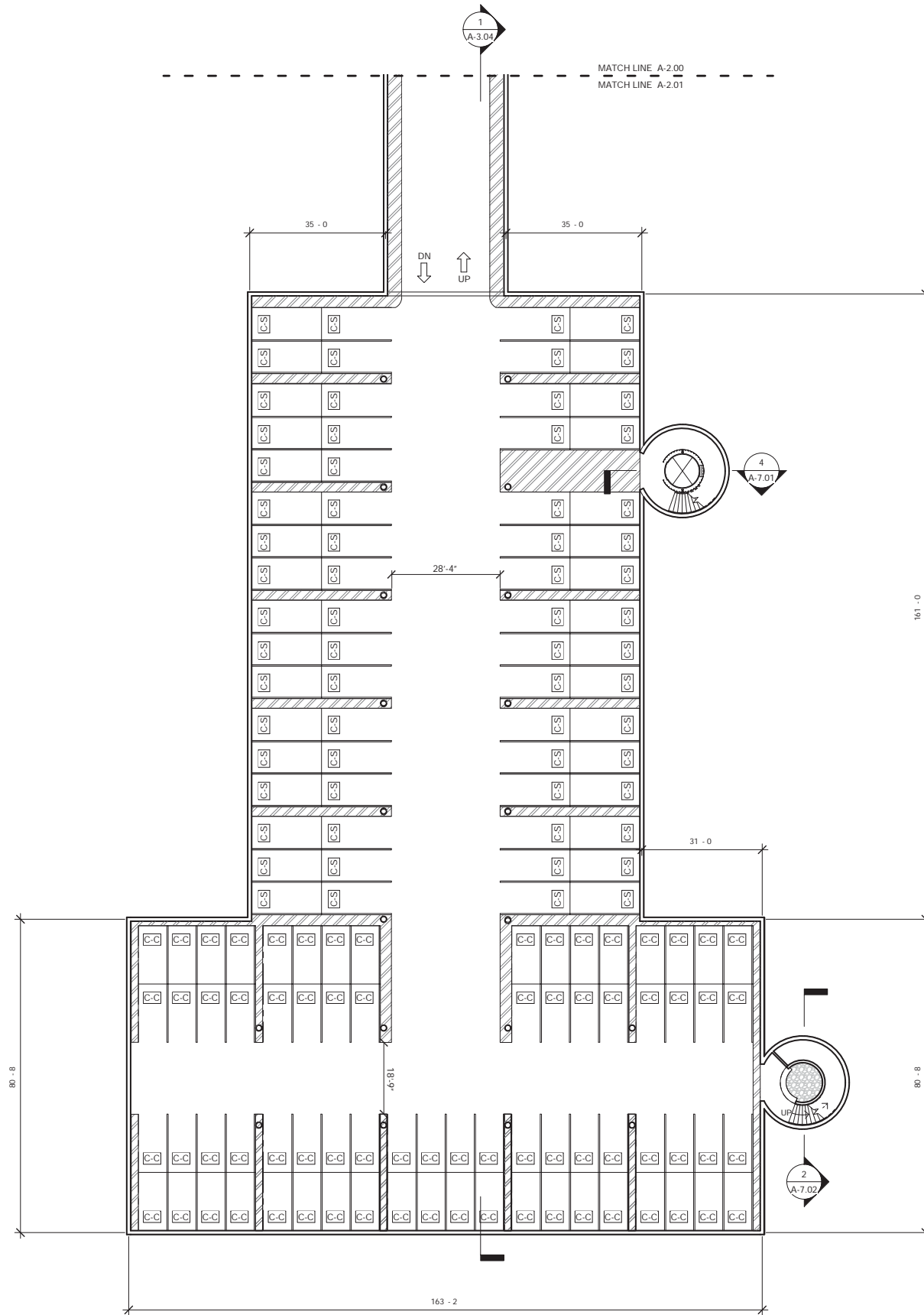
Deviations from this drawing shall not be made without consulting Hodgetts + Fung. In case of discrepancies between drawings, specifications, and details included in contract documents, Hodgetts + Fung shall decide what deviation must be followed and their decision shall be final.

Copyright Hodgetts + Fung Design and Architecture.
 All rights reserved.

MARK	DATE	DESCRIPTION
	03.26.15	DEVELOPMENT REVISIONS
	04.13.15	DEVELOPMENT REVISIONS

DRAWING	PROJECT NO.	1330
SUBMISSION	DEVELOPMENT PERMIT	
BLDG. DATE	06.15.14	
SCALE	1/16" = 1'-0"	
DRAWN BY	DV	
CHECKED BY	CHK	SHEET SIZE: 30" x 42"
DRAWING TITLE	LEVEL P3 PLAN	
DRAWING NO.	A-2.00	





P3 EXTENSION PARKING SUMMARY	
STANDARD	66
COMPACT	72
ACCESSIBLE	0
LOADING	0

CONSULTANT INFORMATION

LANDSCAPE ARCHITECT
 AHBE Landscape Architects
 617 West Seventh St, Suite 304
 Los Angeles, CA 90017
 P: 213 694 3800
 F: 213 694 3801
 E: cabei@ahbe.com

LIGHTING DESIGN
 Horton, Lees, Brogden Lighting Design
 6580 Washington Blvd.
 Culver City, CA 90232
 P: 310 837 0929
 F: 310 837 0902
 E: taghassian@hblighting.com

STRUCTURAL
 Englekirk
 888 S. Figueroa Street, 18th Floor
 Los Angeles, CA 90017
 P: 323.733.6673
 E: vladimk.volnyy@englekirk.com

ROBERTSON LANE
 645-681 N. Robertson Boulevard and 648-688 N. La Peer Drive,
 West Hollywood, CA 90069

Faring Capital // Jason Moulton, Managing Partner
 8899 Beverly Blvd., Suite 716 West Hollywood, CA 90048
 P: 310-995-7399 E: jason@faringcapital.com

HODGETTS + FUNG
 DESIGN AND ARCHITECTURE

hplusf.com

5837 Adams Blvd.
 Culver City, CA 90232
 323.937.2150
 mailbox@hplusf.com

The designs, details and specifications contained in this drawing are confidential. The recipients of this drawing hereby acknowledge and agree that it is the sole property of Hodgetts + Fung and that they shall neither use nor reveal any of the designs, details and specifications contained in this drawing, outside of the contractual agreement expressed within permission from Hodgetts + Fung.

Deviations from this drawing shall not be made without consulting Hodgetts + Fung. In case of discrepancies between drawings, specifications, and details included in contract documents, Hodgetts + Fung shall decide what instruction must be followed and their decision shall be final.

Copyright Hodgetts + Fung Design and Architecture.
 All rights reserved.

ISSUE NOTES

MARK	DATE	DESCRIPTION
	05.29.15	DEVELOPMENT REVISIONS
		DEVELOPMENT REVISIONS

DRAWING

PROJECT NO.	1330
SUBMISSION	DEVELOPMENT PERMIT
SUB. DATE	05.15.14
SCALE	1/16" = 1'-0"
DRAWN BY	DV
CHECKED BY	CHK
SHEET SIZE	30" x 42"
DRAWING TITLE	LEVEL P3 PARK EXTENSION PLAN
DRAWING NO.	A-2.01

LANDSCAPE ARCHITECT
 AHBE Landscape Architects
 617 West Seventh St, Suite 304
 Los Angeles, CA 90017
 P: 213 694 3801
 F: 213 694 3801
 E: cabei@ahbe.com

LIGHTING DESIGN
 Horton, Lees, Brogden Lighting Design
 6580 Washington Blvd.
 Culver City, CA 90232
 P: 310 837 0929
 F: 310 837 0902
 E: taghassian@hblighting.com

STRUCTURAL
 Englekirk
 888 S. Figueroa Street, 18th Floor
 Los Angeles, CA 90017
 P: 323.733.6673
 E: vladimk.volnyy@englekirk.com

ROBERTSON LANE
 645-681 N. Robertson Boulevard and 648-668 N. La Peer Drive.
 West Hollywood, CA 90069

Faring Capital // Jason Moulton, Managing Partner
 8899 Beverly Blvd., Suite 716 West Hollywood, CA 90048
 P: 310-995-7399 E: jason@faringcapital.com

HODGETTS + FUNG
 DESIGN AND ARCHITECTURE

hplusf
 5837 Adams Blvd.
 Culver City, CA 90232
 323.937.2150
 mailbox@hplusf.com

REGISTERED ARCHITECT
 HODGETTS FUNG
 C-04194
 STATE OF CALIFORNIA

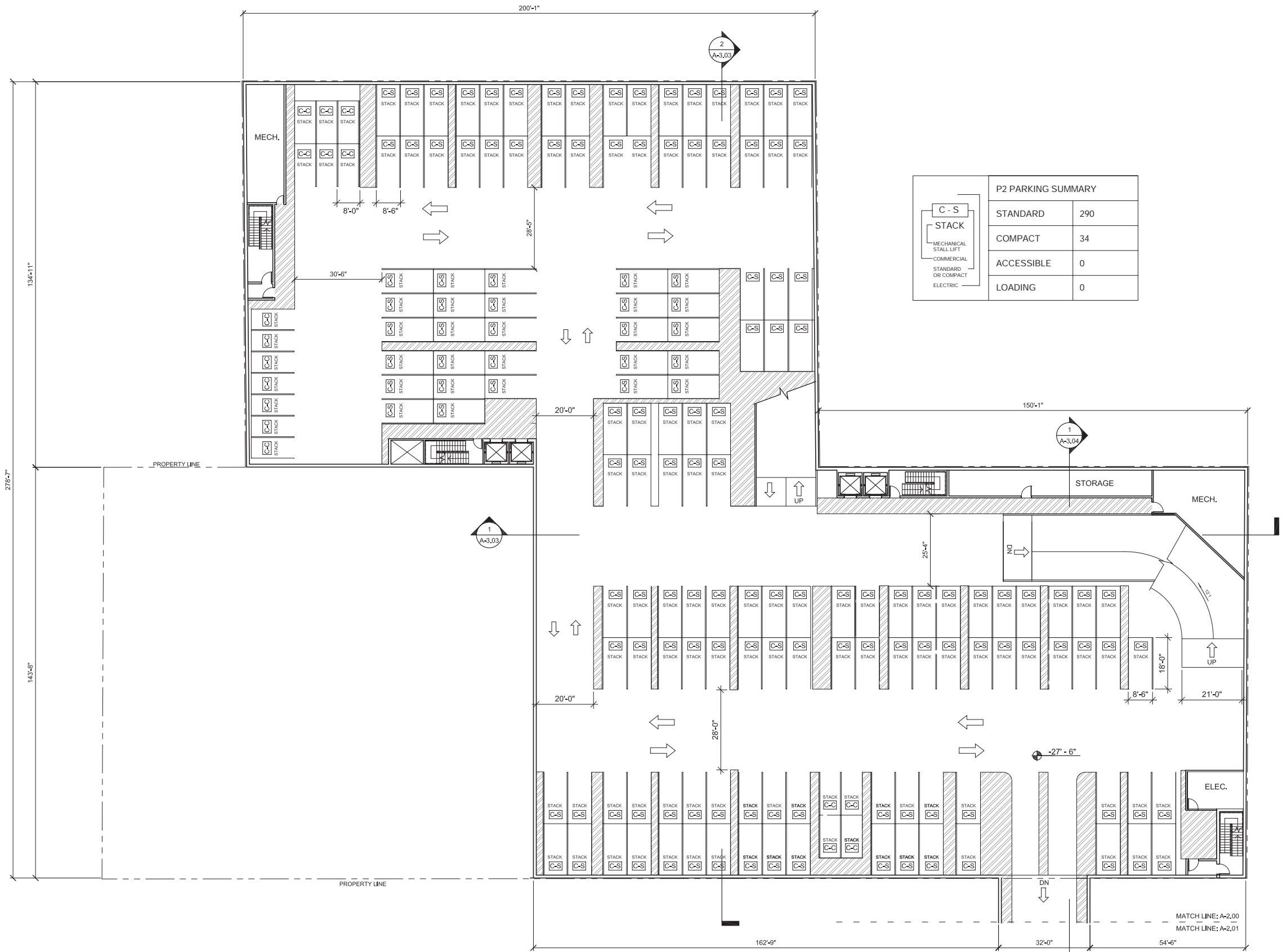
The design, details and specifications contained in this drawing are confidential. The recipients of this drawing hereby acknowledge and agree that it is the sole property of Hodgetts + Fung and that they shall neither use nor reveal any of the design, details and specifications contained in this drawing, outside of the contractual agreement expressed within permission from Hodgetts + Fung.

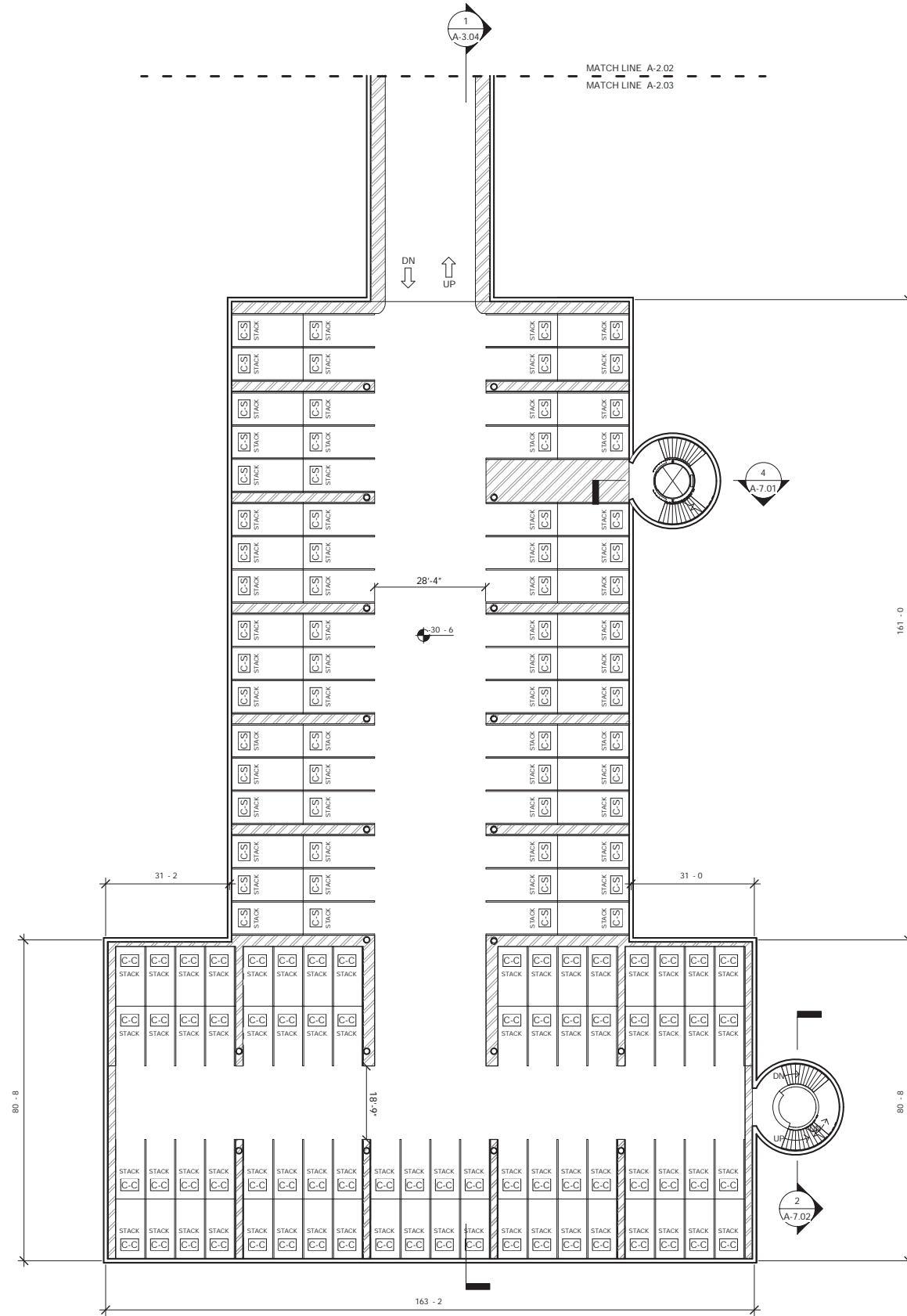
Deviations from this drawing shall not be made without consulting Hodgetts + Fung. In case of discrepancies between drawings, specifications, and details included in contract documents, Hodgetts + Fung shall decide what deviation must be followed and their decision shall be final.

Copyright Hodgetts + Fung Design and Architecture.
 All rights reserved.

MARK	DATE	DESCRIPTION
	03.26.15	DEVELOPMENT REVISIONS
	04.13.15	DEVELOPMENT REVISIONS

DRAWING	PROJECT NO.	1330
SUBMISSION	DEVELOPMENT PERMIT	
BLDG. DATE	06.16.14	
SCALE	1/16" = 1'-0"	
DRAWN BY	DV	
CHECKED BY	CHK	SHEET SIZE: 30" x 40"
DRAWING TITLE	LEVEL P2 PLAN	
DRAWING NO.	A-2.02	





P2 EXTENSION PARKING SUMMARY	
STANDARD	132
COMPACT	144
ACCESSIBLE	0
LOADING	0

CONSULTANT INFORMATION

LANDSCAPE ARCHITECT
 AHBE Landscape Architects
 617 West Seventh St, Suite 304
 Los Angeles, CA 90017
 P: 213 694 3801
 F: 213 694 3801
 E: cabei@ahbe.com

LIGHTING DESIGN
 Horton, Lees, Brogden Lighting Design
 6580 Washington Blvd.
 Culver City, CA 90232
 P: 310 837 0929
 F: 310 837 0902
 E: taghassian@hblighting.com

STRUCTURAL
 Englekirk
 888 S. Flgueroa Street, 18th Floor
 Los Angeles, CA 90017
 P: 323.733.6673
 E: vladimk.volnyy@englekirk.com

ROBERTSON LANE
 645-681 N. Robertson Boulevard and 648-668 N. La Peer Drive.
 West Hollywood, CA 90069

Faring Capital // Jason Moulton, Managing Partner
 8889 Beverly Blvd., Suite 716 West Hollywood, CA 90048
 P: 310-995-7389 E: jason@faringcapital.com

HODGETTS + FUNG
 DESIGN AND ARCHITECTURE

hplusf.com

5837 Adams Blvd.
 Culver City, CA 90232
 3 2 3 . 9 3 7 . 2 1 5 0
 mailbox@hplusf.com

The designs, details and specifications contained in this drawing are confidential. The recipients of this drawing hereby acknowledge and agree that it is the sole property of Hodgetts + Fung and that they shall neither use nor reveal any of the designs, details and specifications contained in this drawing, outside of the contractual agreement expressed within permission from Hodgetts + Fung.

Deviations from this drawing shall not be made without consulting Hodgetts + Fung. In case of discrepancies between drawings, specifications, and details included in contract documents, Hodgetts + Fung shall decide which deviation must be followed and their decision shall be final.

Copyright Hodgetts + Fung Design and Architecture.
 All rights reserved.

ISSUE NOTES

MARK	DATE	DESCRIPTION
	08.28.15	DEVELOPMENT REVISIONS
	08.12.16	DEVELOPMENT REVISIONS

DRAWING

PROJECT NO.	1330
SUBMISSION	DEVELOPMENT PERMIT
ISS. DATE	08.16.14
SCALE	1/16" = 1'-0"
DRAWN BY	DV
CHECKED BY	CHK
DRAWING TITLE	LEVEL P2 PARK EXTENSION PLAN
DRAWING NO.	A-2.03

LANDSCAPE ARCHITECT
 AHBE Landscape Architects
 617 West Seventh St, Suite 304
 Los Angeles, CA 90017
 P: 213 694 3801
 F: 213 694 3801
 E: cabei@ahbe.com

LIGHTING DESIGN
 Horton, Lees, Brogden Lighting Design
 6580 Washington Blvd.
 Culver City, CA 90232
 P: 310 837 0929
 F: 310 837 0902
 E: taghassan@hblighting.com

STRUCTURAL
 Englekirk
 888 S. Figueroa Street, 18th Floor
 Los Angeles, CA 90017
 P: 323.733.6673
 E: vladimk.volnyy@englekirk.com

ROBERTSON LANE
 645-681 N. Robertson Boulevard and 648-668 N. La Peer Drive.
 West Hollywood, CA 90069

Faring Capital // Jason Illoulan, Managing Partner
 8899 Beverly Blvd., Suite 716 West Hollywood, CA 90048
 P: 310-995-7399 E: jason@faringcapital.com

HODGETTS + FUNG
 DESIGN AND ARCHITECTURE
hplusf
 5837 Adams Blvd.
 Culver City, CA 90232
 3 2 3 . 9 3 7 . 2 1 5 0
 mailbox@hplusf.com



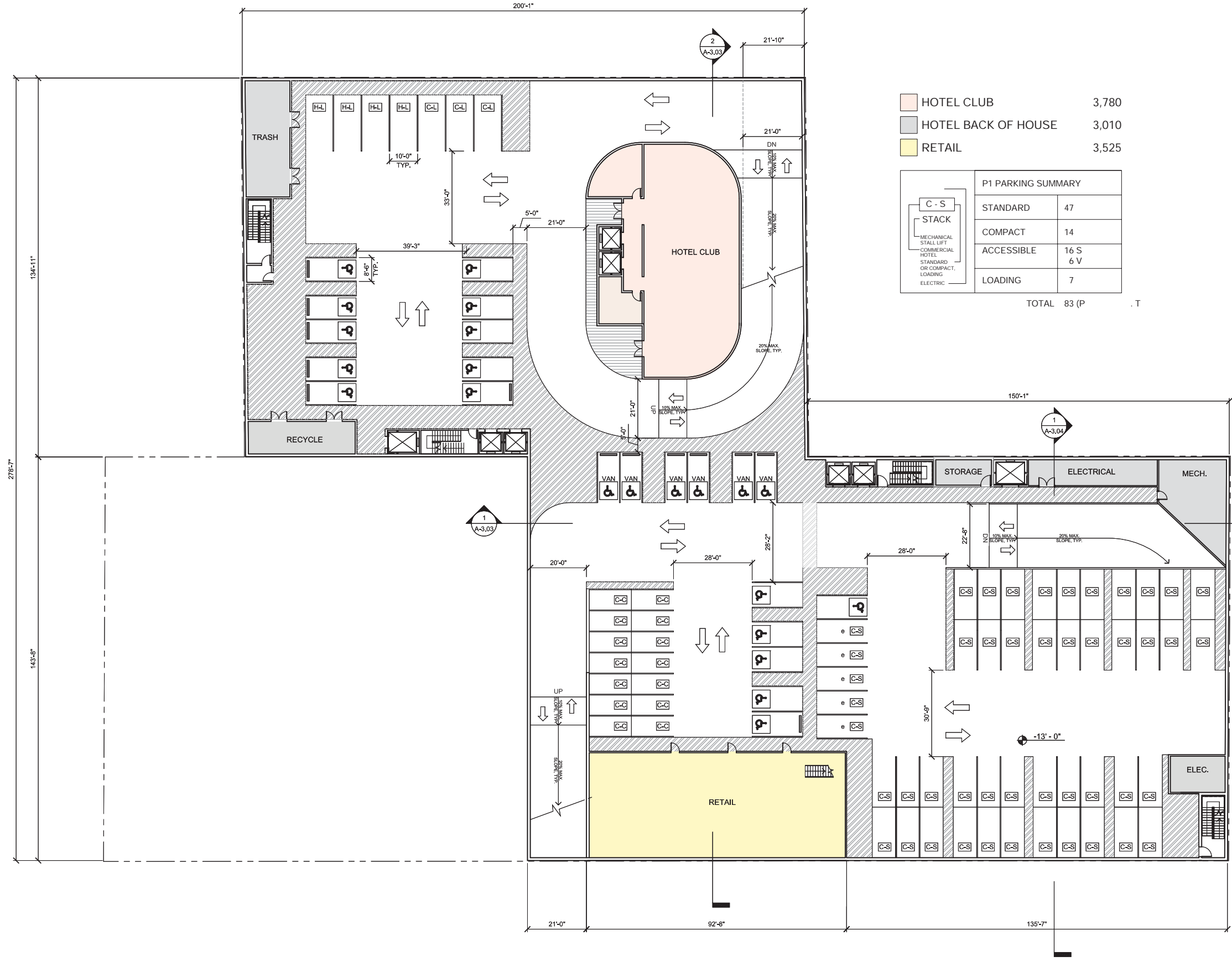
The design, details and specifications contained in this drawing are confidential. The recipients of this drawing hereby acknowledge and agree that it is the sole property of Hodgetts + Fung and that they shall neither use nor reveal any of the design, details and specifications contained in this drawing, outside of the contractual agreement expressed within permission from Hodgetts + Fung.

Deviations from this drawing shall not be made without consulting Hodgetts + Fung. In case of discrepancies between drawings, specifications, and details included in contract documents, Hodgetts + Fung shall decide which instruction must be followed and their decision shall be final.

Copyright Hodgetts + Fung Design and Architecture.
 All rights reserved.

MARK	DATE	DESCRIPTION
	08.29.15	DEVELOPMENT REVISIONS
	08.12.15	DEVELOPMENT REVISIONS

PROJECT NO.	1330
SUBMISSION	DEVELOPMENT PERMIT
ISSUE DATE	08.15.14
SCALE	1/16" = 1'-0"
DRAWN BY	DV
CHECKED BY	CHK
SHEET SIZE	30" x 42"
DRAWING TITLE	LEVEL P1 PLAN
DRAWING NO.	A-2.04



HOTEL CLUB	3,780
HOTEL BACK OF HOUSE	3,010
RETAIL	3,525

P1 PARKING SUMMARY	
STANDARD	47
COMPACT	14
ACCESSIBLE	16 S 6 V
LOADING	7
TOTAL 83 (P . T)	

LANDSCAPE ARCHITECT
 AHBE Landscape Architects
 617 West Seventh St, Suite 304
 Los Angeles, CA 90017
 P: 213 694 3801
 F: 213 694 3801
 E: cabei@ahbe.com

LIGHTING DESIGN
 Horton, Lees, Brogden Lighting Design
 6580 Washington Blvd.
 Culver City, CA 90232
 P: 310 837 0929
 F: 310 837 0902
 E: taghassian@hblighting.com

STRUCTURAL
 Englekirk
 888 S. Figueroa Street, 18th Floor
 Los Angeles, CA 90017
 P: 323.733.6673
 E: vladimir.volnyy@englekirk.com

ROBERTSON LANE

645-681 N. Robertson Boulevard and 649-668 N. La Peer Drive.
 West Hollywood, CA 90069

Faring Capital // Jason Moulton, Managing Partner
 8899 Beverly Blvd., Suite 716 West Hollywood, CA 90048
 P: 310-995-7399 E: jason@faringcapital.com

HODGETTS + FUNG
 DESIGN AND ARCHITECTURE
hplusf.com
 5837 Adams Blvd.
 Culver City, CA 90232
 3 2 3 . 9 3 7 . 2 1 5 0
 mailbox@hplusf.com



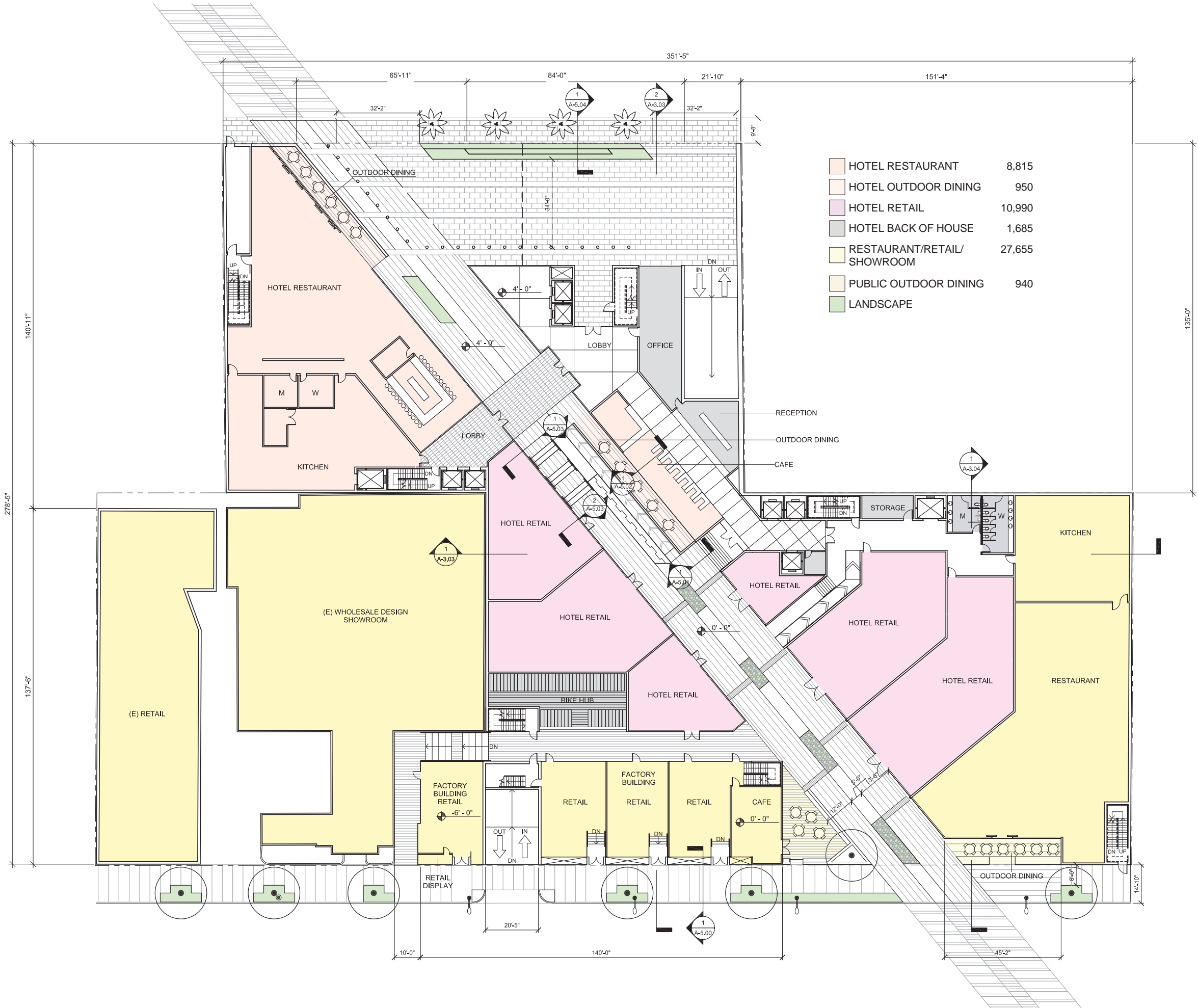
The designs, details and specifications contained in this drawing are confidential. The recipients of this drawing hereby acknowledge and agree that it is the sole property of Hodgett + Fung and that they shall neither use nor reveal any of the designs, details and specifications contained in this drawing, outside of the contractual agreement expressed within permission from Hodgett + Fung.

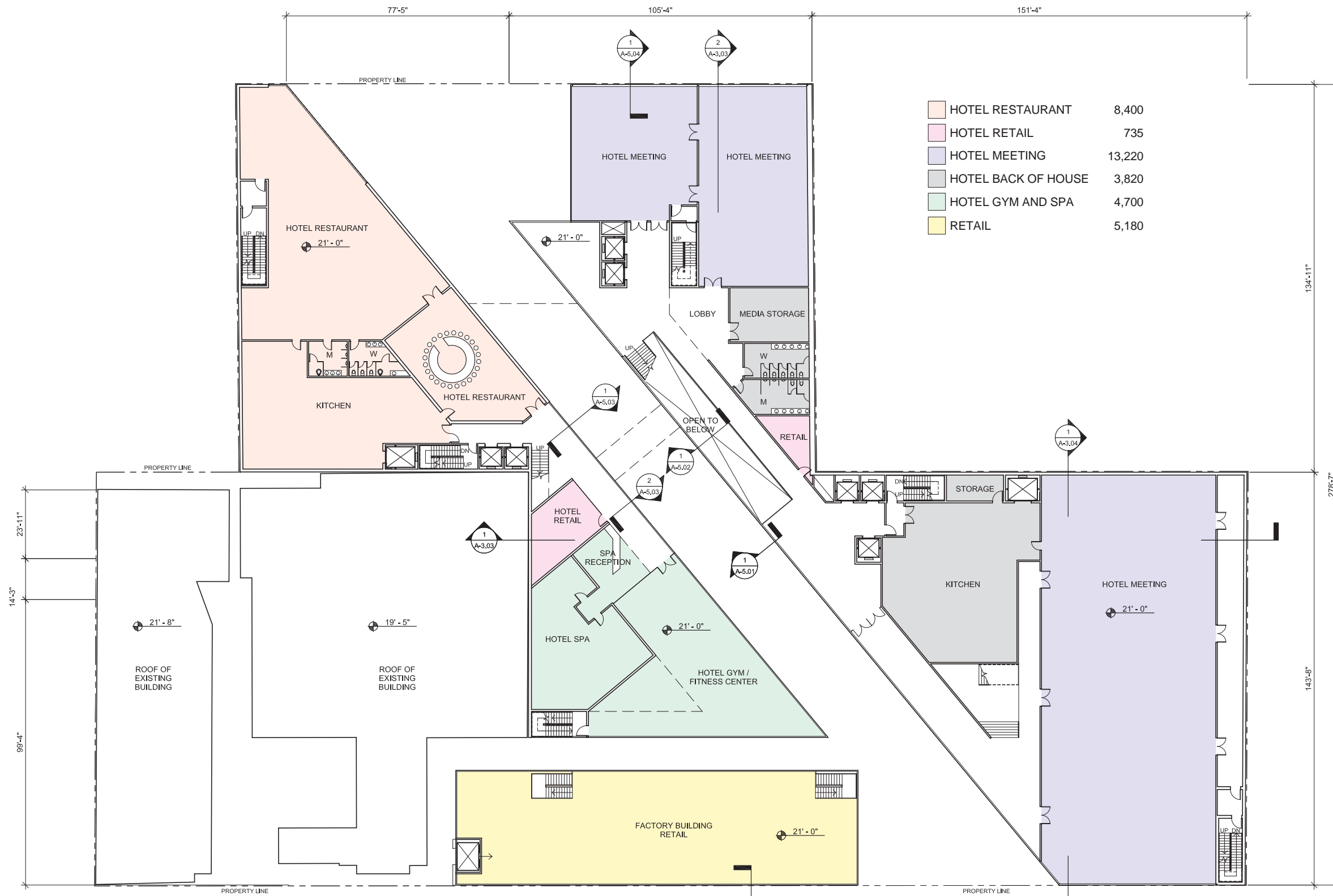
Designs from this drawing shall not be made without consulting Hodgett + Fung. In case of discrepancies between drawings, specifications, and details included in contract documents, Hodgett + Fung shall decide which indication must be followed and their decision shall be final.

Copyright Hodgett + Fung Design and Architecture.
 All rights reserved.

MARK	DATE	DESCRIPTION
08.28.15		DEVELOPMENT REVISIONS
08.12.16		DEVELOPMENT REVISIONS

DRAWING	PROJECT NO.	1330
SUBMISSION	DEVELOPMENT PERMIT	
SUB. DATE	06.16.14	
SCALE	1/16" = 1'-0"	
DRAWN BY	DV	
CHECKED BY	CHK	SHEET SIZE: 30" x 40"
DRAWING TITLE	LEVEL 1 PLAN	
DRAWING NO.	A-2.10	





HOTEL RESTAURANT	8,400
HOTEL RETAIL	735
HOTEL MEETING	13,220
HOTEL BACK OF HOUSE	3,820
HOTEL GYM AND SPA	4,700
RETAIL	5,180

CONSULTANT INFORMATION

LANDSCAPE ARCHITECT
 AHBE Landscape Architects
 617 West Seventh St, Suite 304
 Los Angeles, CA 90017
 P: 213 694 3801
 F: 213 694 3801
 E: cabei@ahbe.com

LIGHTING DESIGN
 Horton, Lees, Brogden Lighting Design
 6580 Washington Blvd.
 Culver City, CA 90232
 P: 310 837 0929
 F: 310 837 0920
 E: taghassian@hblighting.com

STRUCTURAL
 Englekirk
 888 S. Flgueroa Street, 18th Floor
 Los Angeles, CA 90017
 P: 323.733.6673
 E: vladimir.volnyy@englekirk.com

ROBERTSON LANE
 645-681 N. Robertson Boulevard and 648-688 N. La Peer Drive.
 West Hollywood, CA 90069

Faring Capital // Jason Moulton, Managing Partner
 8899 Beverly Blvd., Suite 716 West Hollywood, CA 90048
 P: 310-995-7399 E: jason@faringcapital.com

HODGETTS + FUNG
 DESIGN AND ARCHITECTURE

hplusf.com

5837 Adams Blvd.
 Culver City, CA 90232
 3 2 3 . 9 3 7 . 2 1 5 0
 mailbox@hplusf.com

The designs, details and specifications contained in this drawing are confidential. The recipients of this drawing hereby acknowledge and agree that it is the sole property of Hodgetts + Fung and that they shall neither use nor reveal any of the designs, details and specifications contained in this drawing, outside of the contractual agreement expressed within permission from Hodgetts + Fung.

Deviations from this drawing shall not be made without consulting Hodgetts + Fung. In case of discrepancies between drawings, specifications, and details included in contract documents, Hodgetts + Fung shall decide which deviation must be followed and their decision shall be final.

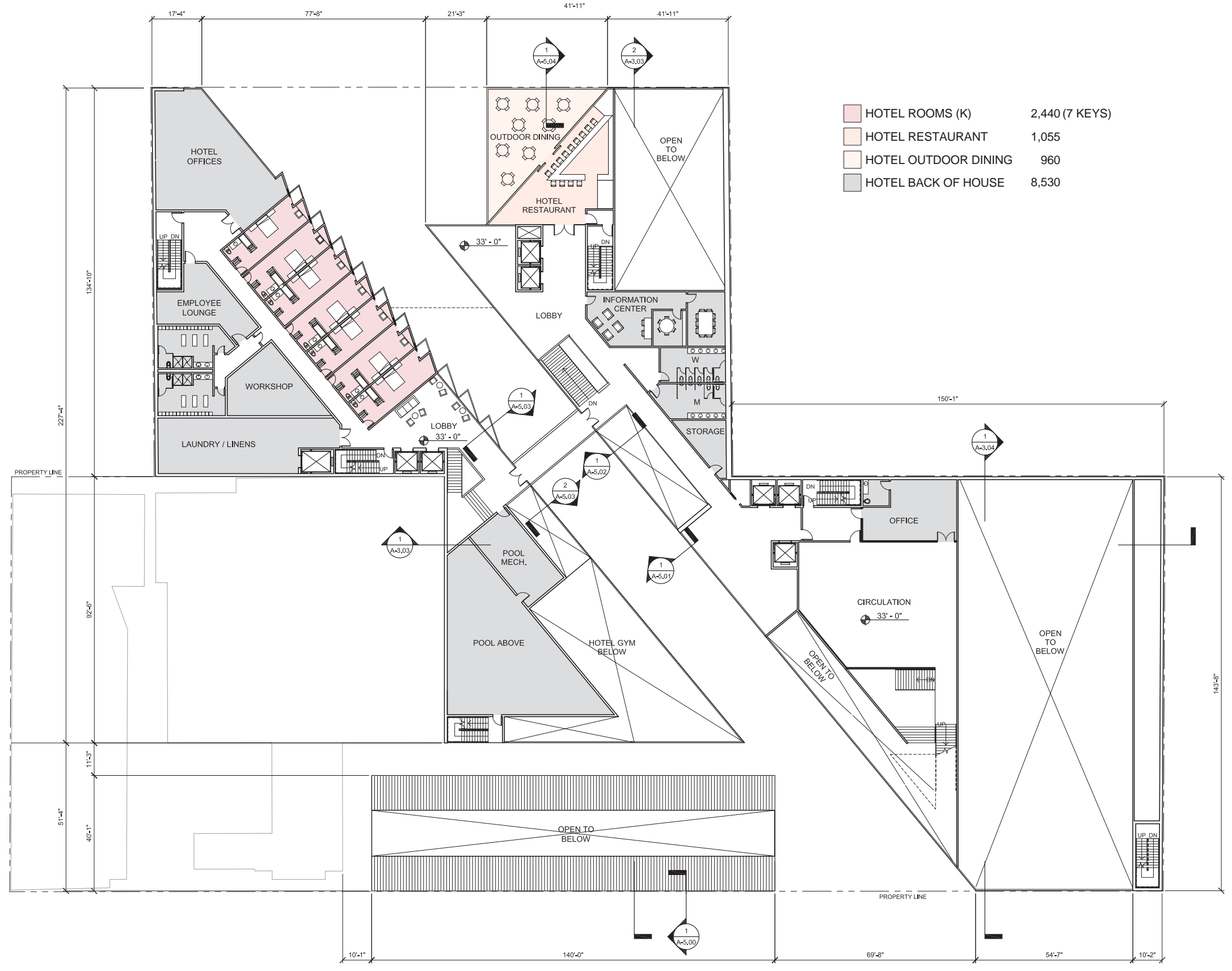
Copyright Hodgetts + Fung Design and Architecture.
 All rights reserved.

ISSUE NOTES

MARK	DATE	DESCRIPTION
08.29.15	08.12.15	DEVELOPMENT REVISIONS
	08.12.15	DEVELOPMENT REVISIONS

DRAWING

PROJECT NO.	1330
SUBMISSION	DEVELOPMENT PERMIT
ISSUE DATE	08.15.14
SCALE	1/16" = 1'-0"
DRAWN BY	DV
CHECKED BY	CHK
SHEET SIZE	30" x 40"
DRAWING TITLE	LEVEL 2 PLAN
DRAWING NO.	A-2.20



 HOTEL ROOMS (K)	2,440 (7 KEYS)
 HOTEL RESTAURANT	1,055
 HOTEL OUTDOOR DINING	960
 HOTEL BACK OF HOUSE	8,530

CONSULTANT INFORMATION

LANDSCAPE ARCHITECT
 AHBE Landscape Architects
 617 West Seventh St, Suite 304
 Los Angeles, CA 90017
 P: 213 694 3800
 F: 213 694 3801
 E: cabei@ahbe.com

LIGHTING DESIGN
 Horton, Lees, Brogden Lighting Design
 6580 Washington Blvd.
 Culver City, CA 90232
 P: 310 837 0929
 F: 310 837 0902
 E: taghassan@hblighting.com

STRUCTURAL
 Englekkrk
 888 S. Figueroa Street, 18th Floor
 Los Angeles, CA 90017
 P: 323.733.6673
 E: vladimk.volnyy@englekkrk.com

ROBERTSON LANE
 645-681 N. Robertson Boulevard and 648-668 N. La Peer Drive.
 West Hollywood, CA 90069

Faring Capital // Jason Moulton, Managing Partner
 8899 Beverly Blvd., Suite 716 West Hollywood, CA 90048
 P: 310-995-7399 E: jason@faringcapital.com

HODGETTS + FUNG
 DESIGN AND ARCHITECTURE
hplusf
 5837 Adams Blvd.
 Culver City, CA 90232
 3 2 3 . 9 3 7 . 2 1 5 0
 mailbox@hplusf.com



The designs, details and specifications contained in this drawing are confidential. The recipients of this drawing hereby acknowledge and agree that it is the sole property of Hodgett + Fung and that they shall neither use nor reveal any of the designs, details and specifications contained in this drawing, outside of the contractual agreement expressed within permission from Hodgett + Fung.

Deviations from this drawing shall not be made without consulting Hodgett + Fung. In case of discrepancies between drawings, specifications, and details included in contract documents, Hodgett + Fung shall decide which deviation must be followed and their decision shall be final.

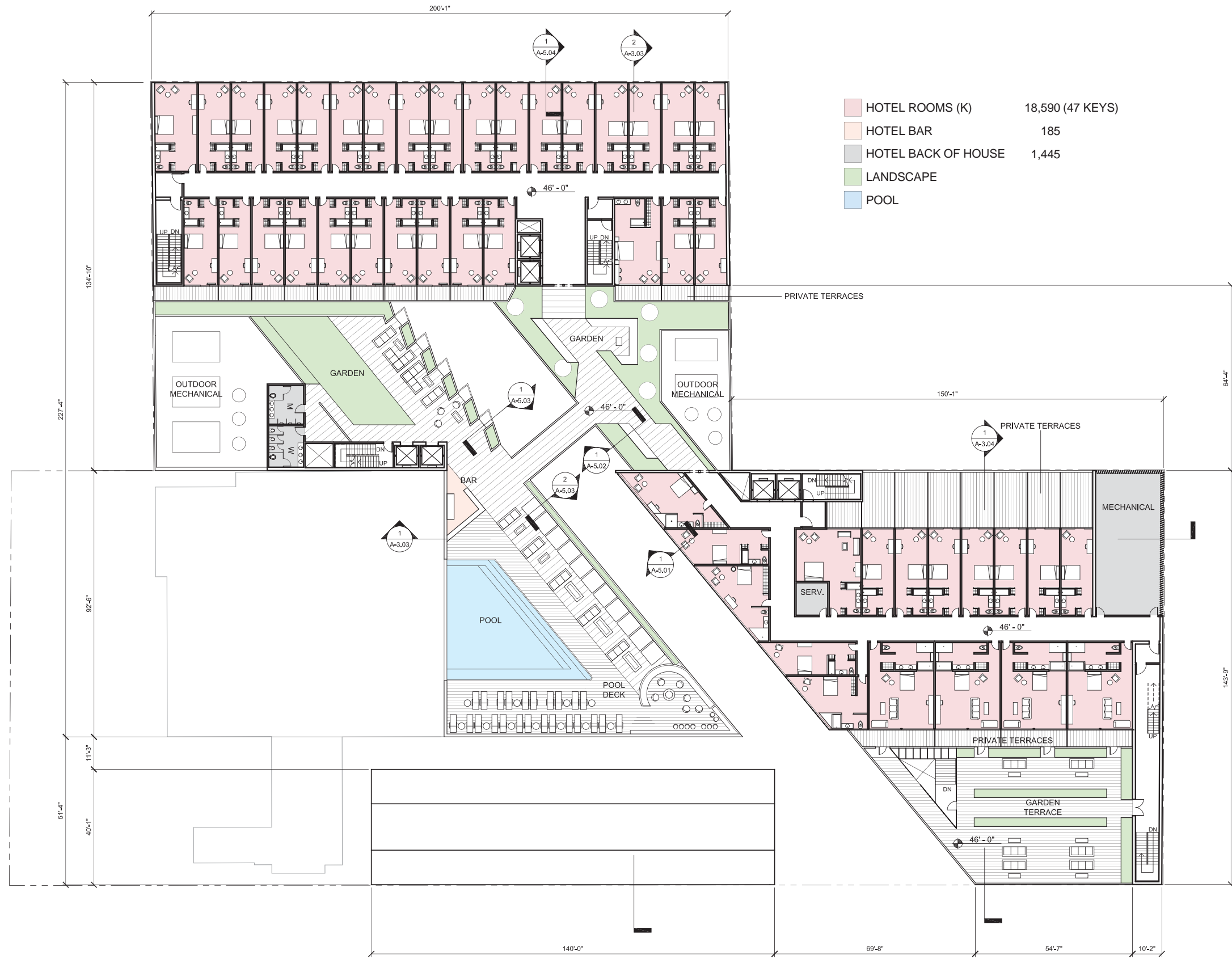
Copyright Hodgett + Fung Design and Architecture.
 All rights reserved.

ISSUE NOTES

MARK	DATE	DESCRIPTION
	03.20.15	DEVELOPMENT REVISIONS
	04.12.16	DEVELOPMENT REVISIONS

DRAWING

PROJECT NO.	1330
SUBMISSION	DEVELOPMENT PERMIT
ISSUE DATE	06.16.14
SCALE	1/16" = 1'-0"
DRAWN BY	DV
CHECKED BY	CHK
SHEET SIZE	30" x 40"
DRAWING TITLE	LEVEL 3 PLAN
DRAWING NO.	A-2.30



HOTEL ROOMS (K)	18,590 (47 KEYS)
HOTEL BAR	185
HOTEL BACK OF HOUSE	1,445
LANDSCAPE	
POOL	

CONSULTANT INFORMATION

LANDSCAPE ARCHITECT
 AHBE Landscape Architects
 617 West Seventh St, Suite 304
 Los Angeles, CA 90017
 P: 213 694 3801
 F: 213 694 3801
 E: cabei@ahbe.com

LIGHTING DESIGN
 Horton, Lees, Brogden Lighting Design
 6580 Washington Blvd.
 Culver City, CA 90232
 P: 310 837 0929
 F: 310 837 0902
 E: taghassian@hblighting.com

STRUCTURAL
 Englekirk
 888 S. Flgueroa Street, 18th Floor
 Los Angeles, CA 90017
 P: 323.733.6673
 E: vladimir.volnyy@englekirk.com

ROBERTSON LANE
 645-681 N. Robertson Boulevard and 648-688 N. La Peer Drive.
 West Hollywood, CA 90069

Faring Capital // Jason Moulton, Managing Partner
 8899 Beverly Blvd., Suite 716 West Hollywood, CA 90048
 P: 310-995-7399 E: jason@faringcapital.com

HODGETTS + FUNG
 DESIGN AND ARCHITECTURE
hplusf
 5837 Adams Blvd.
 Culver City, CA 90232
 3 2 3 . 9 3 7 . 2 1 5 0
 mailbox@hplusf.com



The designs, details and specifications contained in this drawing are confidential. The recipients of this drawing hereby acknowledge and agree that it is the sole property of Hodgett + Fung and that they shall neither use nor reveal any of the designs, details and specifications contained in this drawing, outside of the contractual agreement expressed within permission from Hodgett + Fung.

Deviations from this drawing shall not be made without consulting Hodgett + Fung. In case of discrepancies between drawings, specifications, and details included in contract documents, Hodgett + Fung shall decide which deviation must be followed and their decision shall be final.

Copyright Hodgett + Fung Design and Architecture.
 All rights reserved.

ISSUE NOTES

MARK	DATE	DESCRIPTION
	08.28.15	DEVELOPMENT REVISIONS
	08.12.16	DEVELOPMENT REVISIONS

DRAWING

PROJECT NO.	1330
SUBMISSION	DEVELOPMENT PERMIT
SUB. DATE	05.15.14
SCALE	1/16" = 1'-0"
DRAWN BY	DV
CHECKED BY	CHK
SHEET SIZE	30" x 40"
DRAWING TITLE	LEVEL 4 PLAN
DRAWING NO.	A-2.40



CONSULTANT INFORMATION
LANDSCAPE ARCHITECT
 AHBE Landscape Architects
 617 West Seventh St, Suite 304
 Los Angeles, CA 90017
 P: 213 694 3801
 F: 213 694 3801
 E: cabei@ahbe.com
LIGHTING DESIGN
 Horton, Lees, Brogden Lighting Design
 6580 Washington Blvd.
 Culver City, CA 90232
 P: 310 837 0929
 F: 310 837 0902
 E: taghassian@hblighting.com
STRUCTURAL
 Englekirk
 888 S. Flgueroa Street, 18th Floor
 Los Angeles, CA 90017
 P: 323.733.6673
 E: vladimk.volnyy@englekirk.com

ROBERTSON LANE
 645-681 N. Robertson Boulevard and 648-668 N. La Peer Drive.
 West Hollywood, CA 90069

Faring Capital // Jason Moulton, Managing Partner
 8899 Beverly Blvd., Suite 716 West Hollywood, CA 90048
 P: 310-995-7399 E: jason@faringcapital.com

HODGETTS + FUNG
 DESIGN AND ARCHITECTURE
hplusf
 5837 Adams Blvd.
 Culver City, CA 90232
 3 2 3 . 9 3 7 . 2 1 5 0
 mailbox@hplusf.com

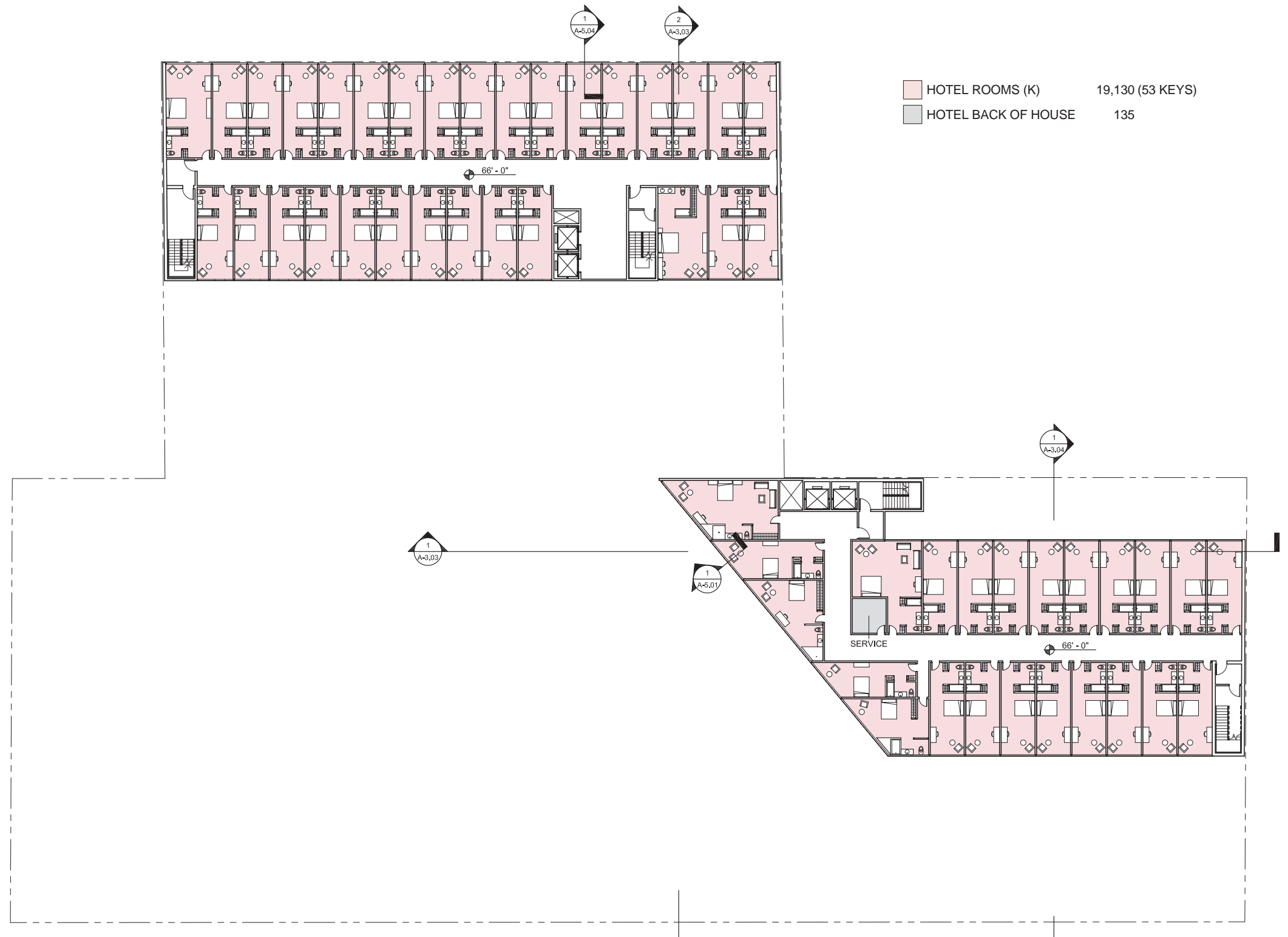
The designs, details and specifications contained in this drawing are confidential. The recipients of this drawing hereby acknowledge and agree that it is the sole property of Hodgett + Fung and that they shall neither use nor reveal any of the designs, details and specifications contained in this drawing, outside of the contractual agreement expressed within permission from Hodgett + Fung.
 Deviations from this drawing shall not be made without consulting Hodgett + Fung. In case of discrepancies between drawings, specifications, and details included in contract documents, Hodgett + Fung shall decide which deviation must be followed and their decision shall be final.
 Copyright Hodgett + Fung Design and Architecture.
 All rights reserved.

ISSUE NOTES

MARK	DATE	DESCRIPTION
	03.23.15	DEVELOPMENT REVISIONS
	04.12.16	DEVELOPMENT REVISIONS

DRAWING

PROJECT NO.	1330
SUBMISSION	DEVELOPMENT PERMIT
ISSUE DATE	05.15.14
SCALE	1/16" = 1'-0"
DRAWN BY	DV
CHECKED BY	CHK
SHEET SIZE	30" x 42"
DRAWING TITLE	LEVEL 5 PLAN
DRAWING NO.	A-2.50



HOTEL ROOMS (K) 19,130 (53 KEYS)
 HOTEL BACK OF HOUSE 135

CONSULTANT INFORMATION
 LANDSCAPE ARCHITECT
 AHBE Landscape Architects
 617 West Seventh St, Suite 304
 Los Angeles, CA 90017
 P: 213 694 3801
 F: 213 694 3801
 E: cabei@ahbe.com
 LIGHTING DESIGN
 Horton, Lees, Brogden Lighting Design
 6580 Washington Blvd.
 Culver City, CA 90232
 P: 310 837 0929
 F: 310 837 0902
 E: taghassian@hblighting.com
 STRUCTURAL
 Englekirk
 888 S. Figueroa Street, 18th Floor
 Los Angeles, CA 90017
 P: 323.733.6673
 E: vladimk.volnyy@englekirk.com

ROBERTSON LANE
 645-681 N. Robertson Boulevard and 648-668 N. La Peer Drive.
 West Hollywood, CA 90069

Faring Capital // Jason Moulton, Managing Partner
 8899 Beverly Blvd., Suite 716 West Hollywood, CA 90048
 P: 310-995-7399 E: jason@faringcapital.com

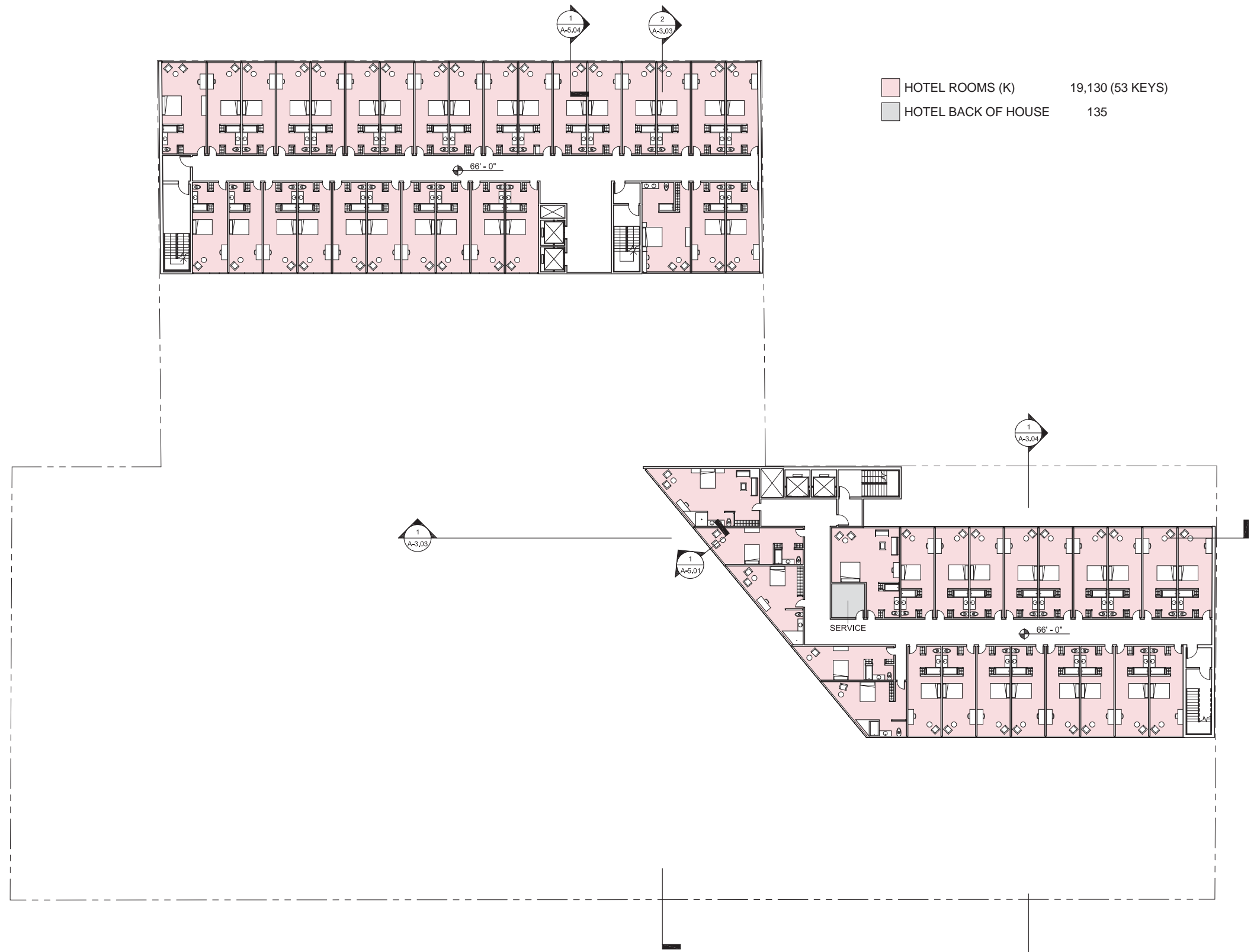
HODGETTS + FUNG
 DESIGN AND ARCHITECTURE
hplusf.com
 5837 Adams Blvd.
 Culver City, CA 90232
 3 2 3 . 9 3 7 . 2 1 5 0
 mailbox@hplusf.com



The designs, details and specifications contained in this drawing are confidential. The recipients of this drawing hereby acknowledge and agree that it is the sole property of Hodgett + Fung and that they shall neither use nor reveal any of the designs, details and specifications contained in this drawing, outside of the contractual agreement expressed within permission from Hodgett + Fung.
 Deviations from this drawing shall not be made without consulting Hodgett + Fung. In case of discrepancies between drawings, specifications, and details included in contract documents, Hodgett + Fung shall decide which deviation must be followed and their decision shall be final.
 Copyright Hodgett + Fung Design and Architecture.
 All rights reserved.

MARK	DATE	DESCRIPTION
	03.21.15	DEVELOPMENT REVISIONS
	04.12.16	DEVELOPMENT REVISIONS

DRAWING	
PROJECT NO.	1330
SUBMISSION	DEVELOPMENT PERMIT
ISSUE DATE	05.15.14
SCALE	1/16" = 1'-0"
DRAWN BY	DV
CHECKED BY	CHK
SHEET SIZE	30" x 42"
DRAWING TITLE	LEVEL 6 PLAN
DRAWING NO.	A-2.60



HOTEL ROOMS (K) 19,130 (53 KEYS)
 HOTEL BACK OF HOUSE 135

CONSULTANT INFORMATION
 LANDSCAPE ARCHITECT
 AHBE Landscape Architects
 617 West Seventh St, Suite 304
 Los Angeles, CA 90017
 P: 213 694 3800
 F: 213 694 3801
 E: cabei@ahbe.com
 LIGHTING DESIGN
 Horton, Lees, Brogden Lighting Design
 6580 Washington Blvd.
 Culver City, CA 90232
 P: 310 837 0929
 F: 310 837 0902
 E: taghassian@hblighting.com
 STRUCTURAL
 Englekirk
 888 S. Flgueroa Street, 18th Floor
 Los Angeles, CA 90017
 P: 323.733.6673
 E: vladimk.volnyy@englekirk.com

ROBERTSON LANE
 645-681 N. Robertson Boulevard and 648-668 N. La Peer Drive.
 West Hollywood, CA 90069

Faring Capital // Jason Illioulan, Managing Partner
 8899 Beverly Blvd., Suite 716 West Hollywood, CA 90048
 P: 310-995-7399 E: jason@faringcapital.com

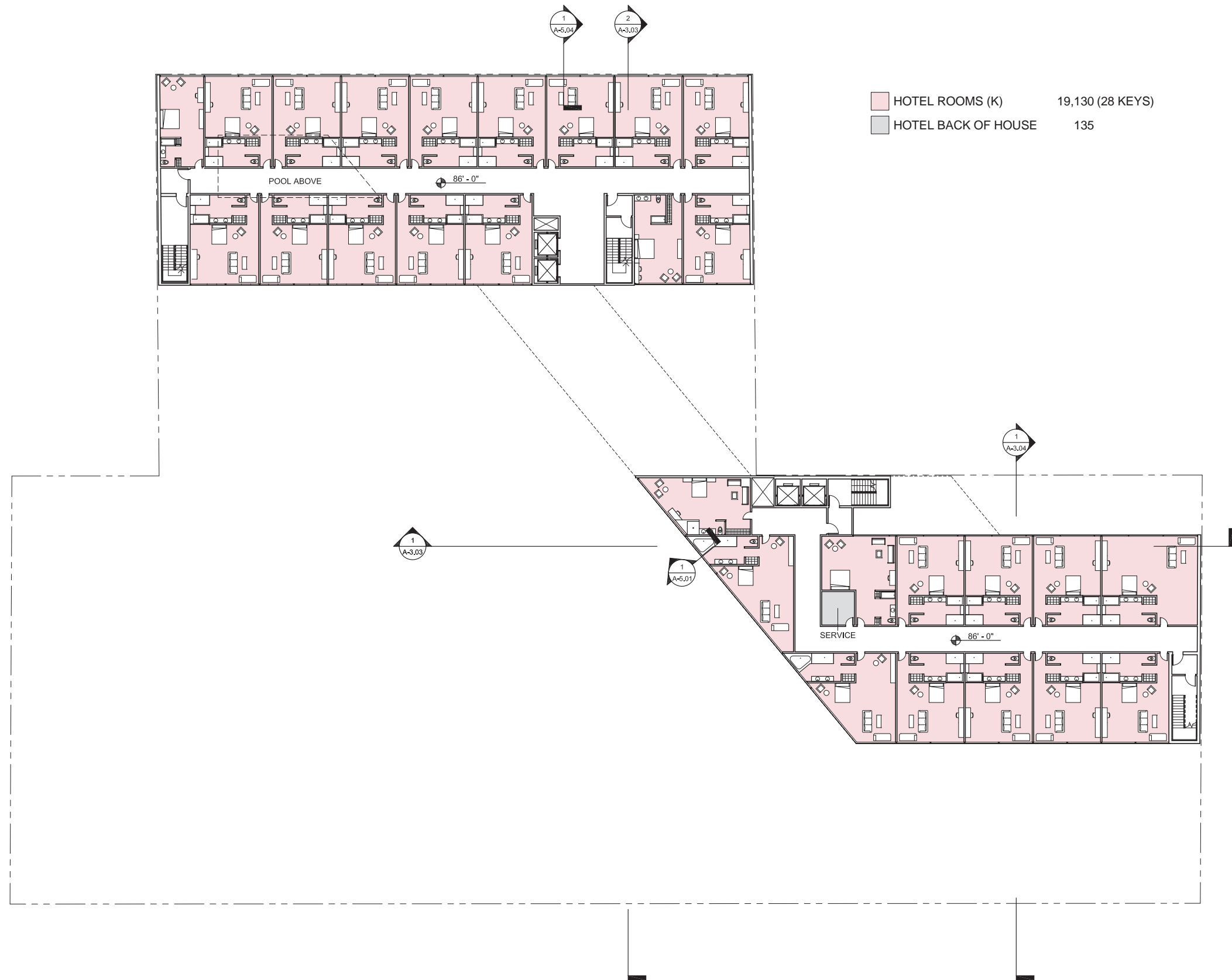
HODGETTS + FUNG
 DESIGN AND ARCHITECTURE
hplusf.com
 5837 Adams Blvd.
 Culver City, CA 90232
 3 2 3 . 9 3 7 . 2 1 5 0
 mailbox@hplusf.com



The designs, details and specifications contained in this drawing are confidential. The recipients of this drawing hereby acknowledge and agree that it is the sole property of Hodgett + Fung and that they shall neither use nor reveal any of the designs, details and specifications contained in this drawing, outside of the contractual agreement expressed within permission from Hodgett + Fung.
 Deviations from this drawing shall not be made without consulting Hodgett + Fung. In case of discrepancies between drawings, specifications, and details included in contract documents, Hodgett + Fung shall decide which deviation must be followed and their decision shall be final.
 Copyright Hodgett + Fung Design and Architecture.
 All rights reserved.

MARK	DATE	DESCRIPTION
	03.21.15	DEVELOPMENT REVISIONS
	04.12.16	DEVELOPMENT REVISIONS

PROJECT NO.	1330
SUBMISSION	DEVELOPMENT PERMIT
ISSUE DATE	06.16.14
SCALE	1/16" = 1'-0"
DRAWN BY	DV
CHECKED BY	CHK
SHEET SIZE	30" x 42"
DRAWING TITLE	LEVEL 7 PLAN
DRAWING NO.	A-2.70



HOTEL ROOMS (K) 19,130 (28 KEYS)
 HOTEL BACK OF HOUSE 135

CONSULTANT INFORMATION
LANDSCAPE ARCHITECT
 AHBE Landscape Architects
 617 West Seventh St, Suite 304
 Los Angeles, CA 90017
 P: 213 694 3801
 F: 213 694 3801
 E: cabei@ahbe.com
LIGHTING DESIGN
 Horton, Lees, Brogden Lighting Design
 6580 Washington Blvd.
 Culver City, CA 90232
 P: 310 837 0929
 F: 310 837 0902
 E: taghassian@hblighting.com
STRUCTURAL
 Englekirk
 888 S. Figueroa Street, 18th Floor
 Los Angeles, CA 90017
 P: 323.733.6673
 E: vladimk.volnyy@englekirk.com

ROBERTSON LANE
 645-681 N. Robertson Boulevard and 648-668 N. La Peer Drive.
 West Hollywood, CA 90069

Farling Capital // Jason Moulton, Managing Partner
 8899 Beverly Blvd., Suite 716 West Hollywood, CA 90048
 P: 310-995-7399 E: jason@farlingcapital.com

HODGETTS + FUNG
 DESIGN AND ARCHITECTURE
hplusf.com
 5837 Adams Blvd.
 Culver City, CA 90232
 3 2 3 . 9 3 7 . 2 1 5 0
 mailbox@hplusf.com

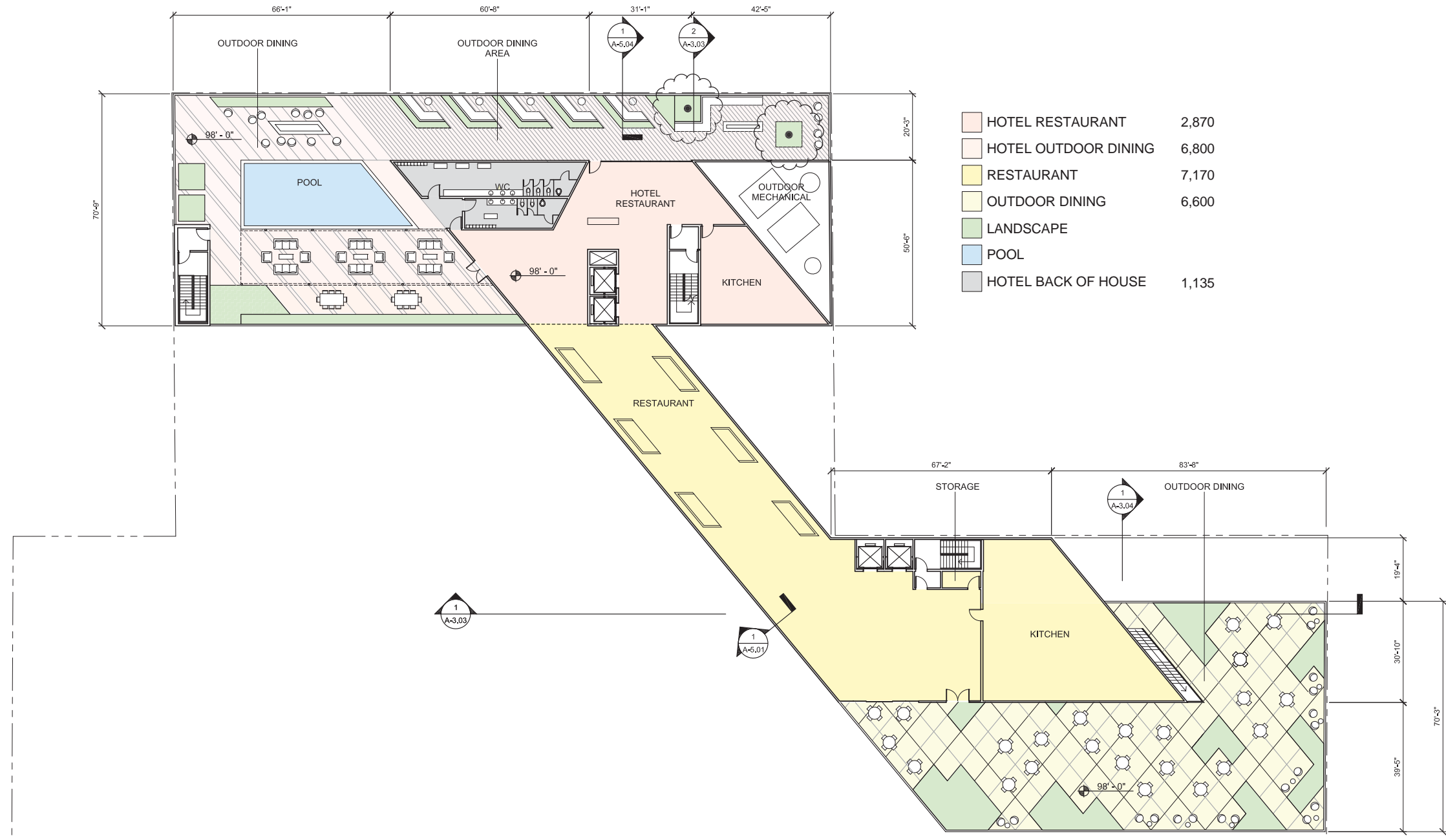
The designs, details and specifications contained in this drawing are confidential. The recipients of this drawing hereby acknowledge and agree that it is the sole property of Hodgett + Fung and that they shall neither use nor reveal any of the designs, details and specifications contained in this drawing, outside of the contractual agreement expressed within permission from Hodgett + Fung.
 Deviations from this drawing shall not be made without consulting Hodgett + Fung. In case of discrepancies between drawings, specifications, and details included in contract documents, Hodgett + Fung shall decide which deviation must be followed and their decision shall be final.
 Copyright Hodgett + Fung Design and Architecture.
 All rights reserved.

ISSUE NOTES

MARK	DATE	DESCRIPTION
	03.26.15	DEVELOPMENT REVISIONS
	04.12.16	DEVELOPMENT REVISIONS

DRAWING

PROJECT NO.	1330
SUBMISSION	DEVELOPMENT PERMIT
ISSUE DATE	05.15.14
SCALE	1/16" = 1'-0"
DRAWN BY	DV
CHECKED BY	CHK
SHEET SIZE	30" x 40"
DRAWING TITLE	LEVEL 8 PLAN
DRAWING NO.	A-2.80



 HOTEL RESTAURANT	2,870
 HOTEL OUTDOOR DINING	6,800
 RESTAURANT	7,170
 OUTDOOR DINING	6,600
 LANDSCAPE	
 POOL	
 HOTEL BACK OF HOUSE	1,135

CONSULTANT INFORMATION

LANDSCAPE ARCHITECT
 AHBE Landscape Architects
 617 West Seventh St, Suite 304
 Los Angeles, CA 90017
 P: 213 694 3801
 F: 213 694 3801
 E: cabei@ahbe.com

LIGHTING DESIGN
 Horton, Lees, Brogden Lighting Design
 6580 Washington Blvd.
 Culver City, CA 90232
 P: 310 837 0929
 F: 310 837 0902
 E: taghassan@hblighting.com

STRUCTURAL
 Englekirk
 888 S. Flgueroa Street, 18th Floor
 Los Angeles, CA 90017
 P: 323.733.6673
 E: vladimk.volnyy@englekirk.com

ROBERTSON LANE

645-681 N. Robertson Boulevard and 648-668 N. La Peer Drive.
 West Hollywood, CA 90069

Faring Capital // Jason Moulton, Managing Partner
 8899 Beverly Blvd., Suite 716 West Hollywood, CA 90048
 P: 310-995-7399 E: jason@faringcapital.com

HODGETTS + FUNG
 DESIGN AND ARCHITECTURE

hplusf^{LLC}

5837 Adams Blvd.
 Culver City, CA 90232
 3 2 3 . 9 3 7 . 2 1 5 0
 mailbox@hplusf.com

The designs, details and specifications contained in this drawing are confidential. The recipients of this drawing hereby acknowledge and agree that it is the sole property of Hodgetts + Fung and that they shall neither use nor reveal any of the designs, details and specifications contained in this drawing, outside of the contractual agreement expressed within permission from Hodgetts + Fung.

Deviations from this drawing shall not be made without consulting Hodgetts + Fung. In case of discrepancies between drawings, specifications, and details included in contract documents, Hodgetts + Fung shall decide what instruction must be followed and their decision shall be final.

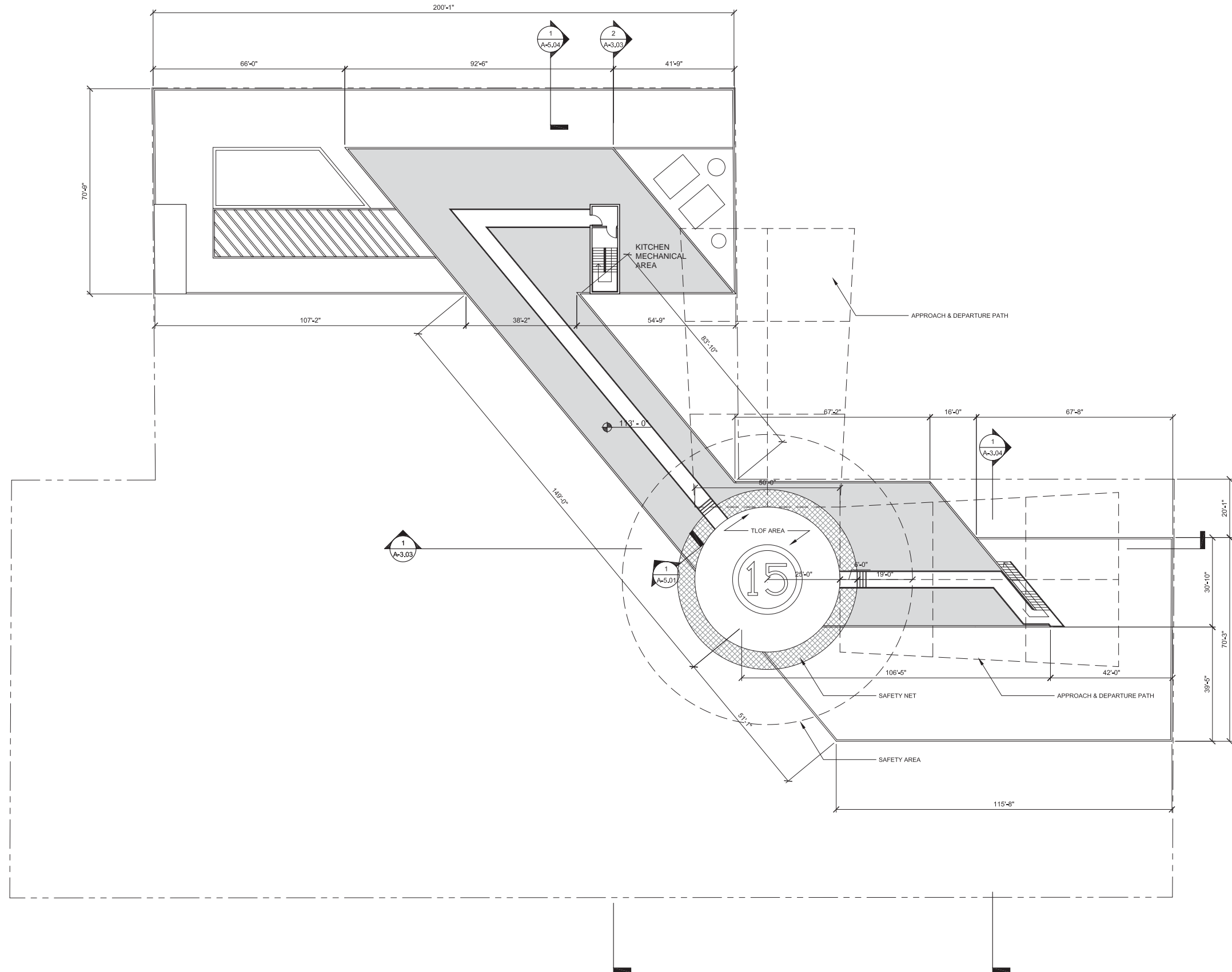
Copyright Hodgetts + Fung Design and Architecture.
 All rights reserved.

ISSUE NOTES

MARK	DATE	DESCRIPTION
	03.24.15	DEVELOPMENT REVISIONS
	04.12.16	DEVELOPMENT REVISIONS

DRAWING

PROJECT NO.	1330
SUBMISSION	DEVELOPMENT PERMIT
ISSUE DATE	05.15.14
SCALE	1/16" = 1'-0"
DRAWN BY	DV
CHECKED BY	CHK
SHEET SIZE	30" x 42"
DRAWING TITLE	LEVEL 9 PLAN
DRAWING NO.	A-2.90



CONSULTANT INFORMATION

LANDSCAPE ARCHITECT
 AHBE Landscape Architects
 617 West Seventh St, Suite 304
 Los Angeles, CA 90017
 P: 213 694 3801
 F: 213 694 3801
 E: cabei@ahbe.com

LIGHTING DESIGN
 Horton, Lees, Brogden Lighting Design
 6580 Washington Blvd.
 Culver City, CA 90232
 P: 310 837 0929
 F: 310 837 0902
 E: taghassian@hblighting.com

STRUCTURAL
 Englekirk
 888 S. Flgueroa Street, 18th Floor
 Los Angeles, CA 90017
 P: 323.733.6673
 E: vladimir.volnyy@englekirk.com

ROBERTSON LANE
 645-681 N. Robertson Boulevard and 648-668 N. La Peer Drive.
 West Hollywood, CA 90069

Faring Capital // Jason Moulton, Managing Partner
 8899 Beverly Blvd., Suite 716 West Hollywood, CA 90048
 P: 310-995-7399 E: jason@faringcapital.com

HODGETTS + FUNG
 DESIGN AND ARCHITECTURE

hplusf.com

5837 Adams Blvd.
 Culver City, CA 90232
 3 2 3 . 9 3 7 . 2 1 5 0
 mailbox@hplusf.com

The designs, details and specifications contained in this drawing are confidential. The recipients of this drawing hereby acknowledge and agree that it is the sole property of Hodgett + Fung and that they shall neither use nor reveal any of the designs, details and specifications contained in this drawing, outside of the contractual agreement expressed within permission from Hodgett + Fung.

Deviations from this drawing shall not be made without consulting Hodgett + Fung. In case of discrepancies between drawings, specifications, and details included in contract documents, Hodgett + Fung shall decide which instruction must be followed and their decision shall be final.

Copyright Hodgett + Fung Design and Architecture.
 All rights reserved.

ISSUE NOTES

MARK	DATE	DESCRIPTION
	08.26.15	DEVELOPMENT REVISIONS
	08.12.16	DEVELOPMENT REVISIONS

DRAWING

PROJECT NO.	1330
SUBMISSION	DEVELOPMENT PERMIT
SUB. DATE	08.16.14
SCALE	1/16" = 1'-0"
DRAWN BY	DV
CHECKED BY	CHK
SHEET SIZE	30" x 40"
DRAWING TITLE	ROOF PLAN
DRAWING NO.	A-2.95