

LEGEND:

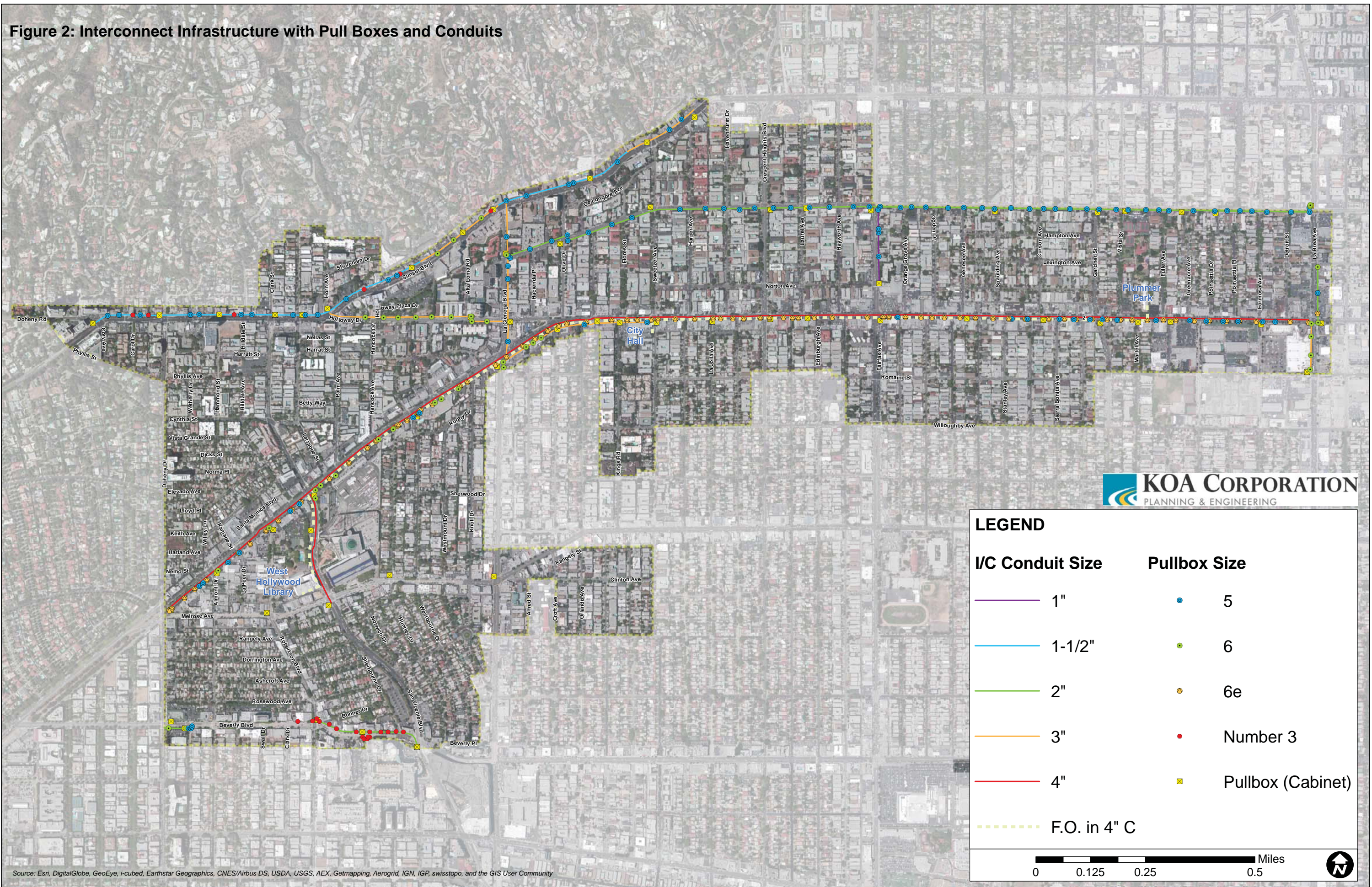
- 1" CONDUIT WITH 12 PR I/C
- x—x— 1-1/2" CONDUIT WITH 6 PR I/C
- x—x— 1-1/2" CONDUIT WITH 25 PR I/C
- - - 2" CONDUIT WITH 6 PR I/C
- - - 2" CONDUIT WITH 12 PR I/C
- - - 2" CONDUIT WITH 25 PR I/C
- 3" CONDUIT WITH 25 PR I/C
- ///— 3" CONDUIT WITH 1-25 PR, 1-6 PR I/C
- 3" CONDUIT WITH 2-25 PR, 1-6 PR I/C
- x—x— 3" CONDUIT WITH 3-25 PR, 1-6 PR I/C (2-3" CONDUITS)
- 4" CONDUIT (4 x 1" INNERDUCTS) WITH F.O.
- ///— 4" CONDUIT (4 x 1" INNERDUCTS) WITH F.O., 25 PR I/C
- 4" CONDUIT (4 x 1" INNERDUCTS) WITH PULLROPE
- 4" CONDUIT (4 x 1" INNERDUCTS) WITH 25 PR I/C
- ZZ— WIRELESS INTERCONNECT

ABBREVIATIONS:

- PR - PAIR
- F.O. - FIBER OPTIC
- I/C - COPPER INTERCONNECT

FIGURE 1 - EXISTING INTERCONNECT INFRASTRUCTURE

Figure 2: Interconnect Infrastructure with Pull Boxes and Conduits



Source: Esri, DigitalGlobe, GeoEye, i-cubed, Earthstar Geographics, CNES/Airbus DS, USDA, USGS, AEX, Getmapping, Aerogrid, IGN, IGP, swisstopo, and the GIS User Community