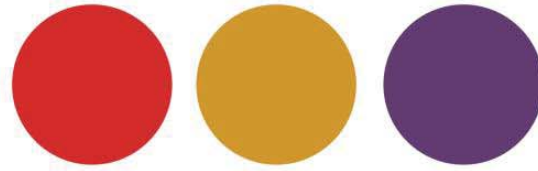




EQUIPMENT COLORS



SHADE CANOPY COLORS



SURFACE PATTERN



C H I L D R E N ' S P L A Y A R E A
C O L O R O P T I O N 1

Sunset



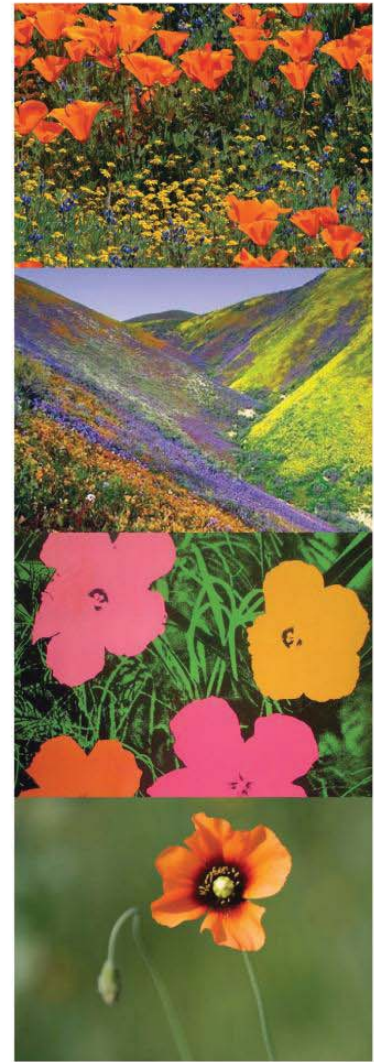
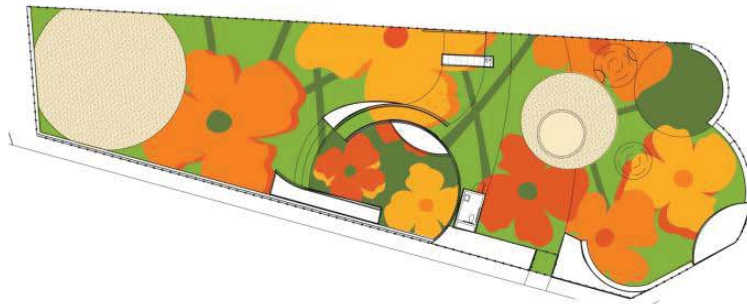
EQUIPMENT COLORS



SHADE CANOPY COLORS



SURFACE PATTERN



C H I L D R E N ' S P L A Y A R E A
C O L O R O P T I O N 2

Wildflower



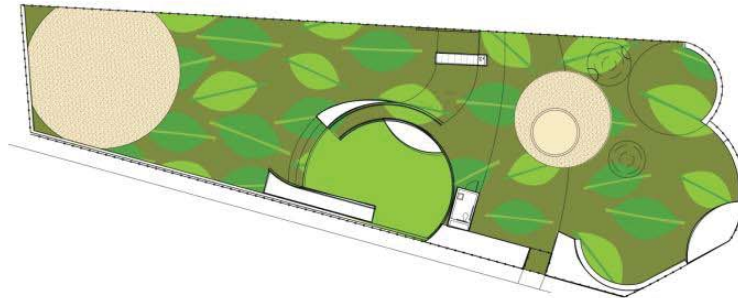
EQUIPMENT COLORS



SHADE CANOPY COLORS



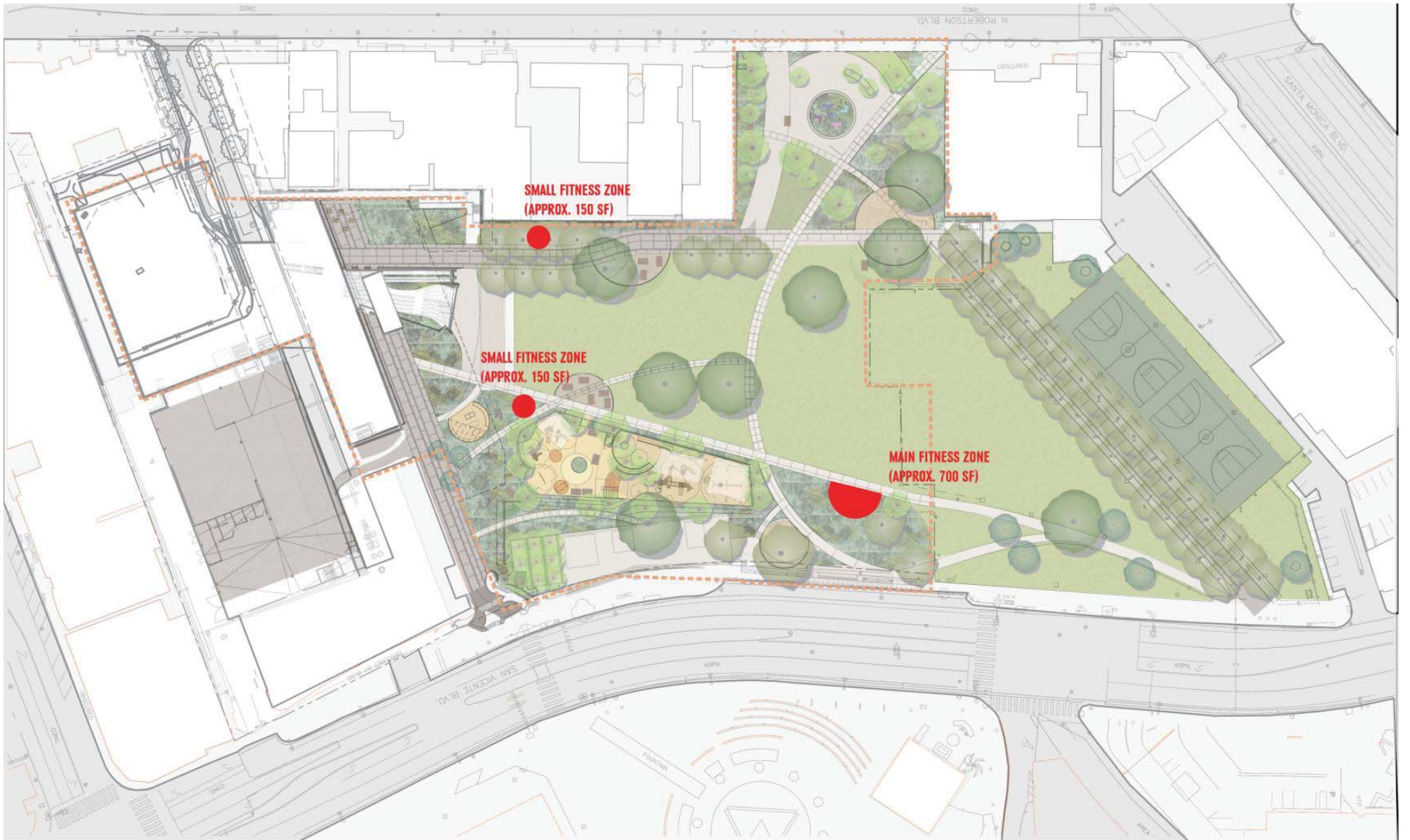
SURFACE PATTERN



C H I L D R E N ' S P L A Y A R E A
C O L O R O P T I O N 3

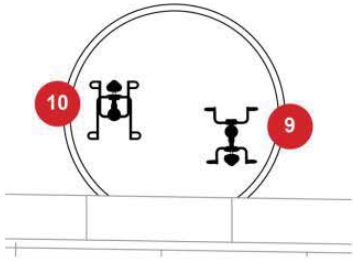
Chaparral

Fitness Gardens

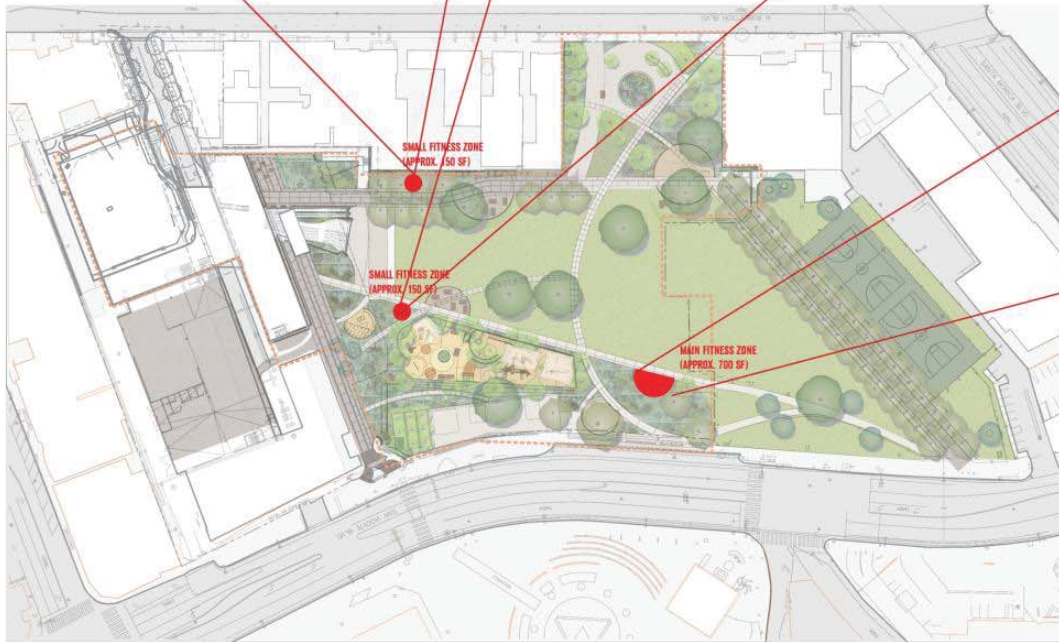
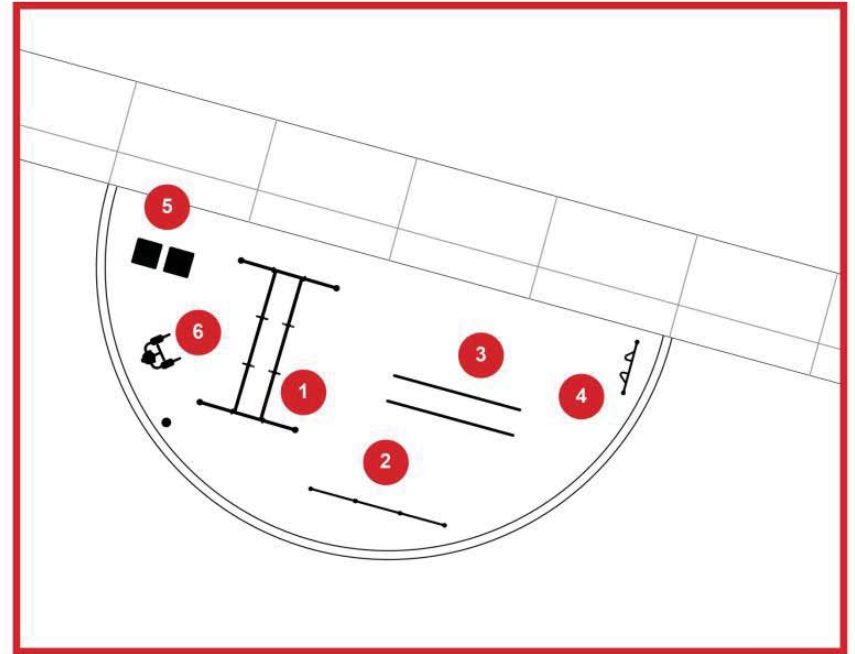
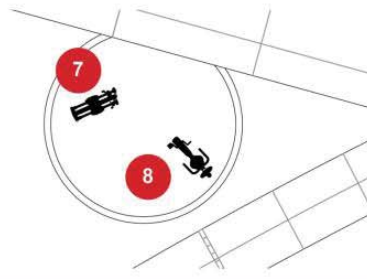


FITNESS GARDENS
PLAN LOCATIONS

UPPER BODY



LOWER BODY



- 1 RINGS
- 2 CHIN-UP BARS
- 3 PARALLEL BARS
- 4 PUSH-UP BARS
- 5 PLYOMETRIC BOXES
- 6 SIT-UP
- 7 ELLIPTICAL MACHINE
- 8 RECUMBENT CYCLE
- 9 CHEST MACHINE
- 10 BACK MACHINE

FITNESS GARDENS DETAIL PLANS

MAIN AREA



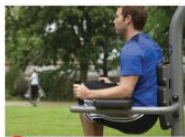
1 RINGS



2 CHIN-UP BARS
3 PARALLEL BARS



4 PUSH-UP BARS



6 SIT-UP



5 PLYOMETRIC BOXES

MAIN AREA



1 STRETCHER



2 CHIN-UP BARS



3 PARALLEL BARS



4 PLATFORM



5 BALANCE



6 SIT-UP



LOWER BODY



7 ELLIPTICAL MACHINE



8 RECUMBENT CYCLE

UPPER BODY



9 CHEST MACHINE



10 BACK MACHINE

LOWER BODY



7 ELLIPTICAL MACHINE



8 RECUMBENT CYCLE

UPPER BODY



9 CHEST MACHINE



10 BACK MACHINE

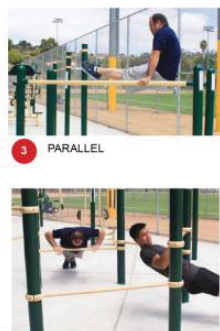
MAIN AREA



1 HORIZONTAL LADDER



2 CHIN-UP BARS



3 PARALLEL



5 PYLOMETRIC



Optional wheelchair-accessible hand cycle add-on (HP2009-7-21)



4 PUSH-UP BARS



6 SIT-UP

LOWER BODY



7 ELLIPTICAL MACHINE



8 RECUMBENT CYCLE

UPPER BODY



9 CHEST MACHINE



10 BACK MACHINE

FITNESS GARDENS
EQUIPMENT OPTIONS

Site Furnishings

1 PROMENADE PATH

2 SECONDARY PATH

EXISTING BENCH



MFG: LANDSCAPE FORMS
MATERIAL: ALUMINUM

OPTION #1



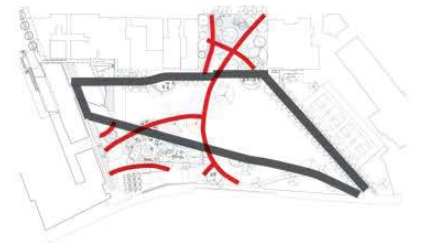
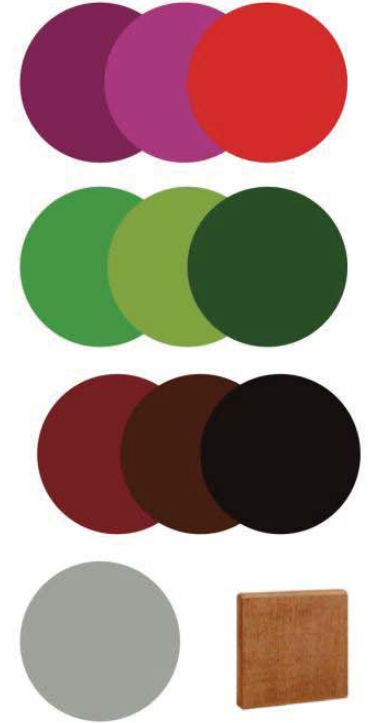
MFG: LANDSCAPE FORMS
MATERIAL: WOOD & POWDERCOATED ALUMINUM

OPTION #2



MFG: FORMS + SURFACES
MATERIAL: WOOD & POWDERCOATED ALUMINUM

INITIAL COLOR PALETTES



S I T E F U R N I S H I N G S
B E N C H E S

OPTION #1



MFG: FORMS + SURFACES
MATERIAL: WOOD & POWDERCOATED ALUMINUM

OPTION #2



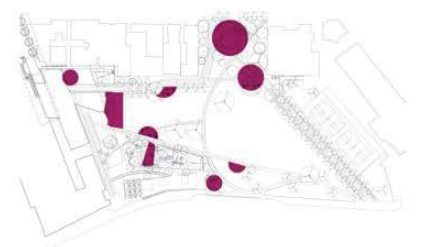
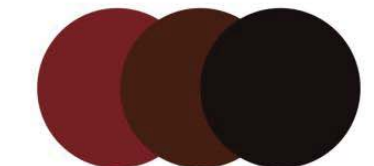
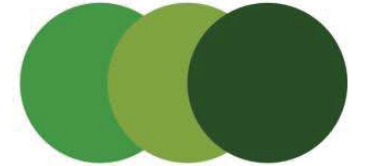
MFG: LANDSCAPE FORMS
MATERIAL: WOOD & POWDERCOATED ALUMINUM

OPTION #3



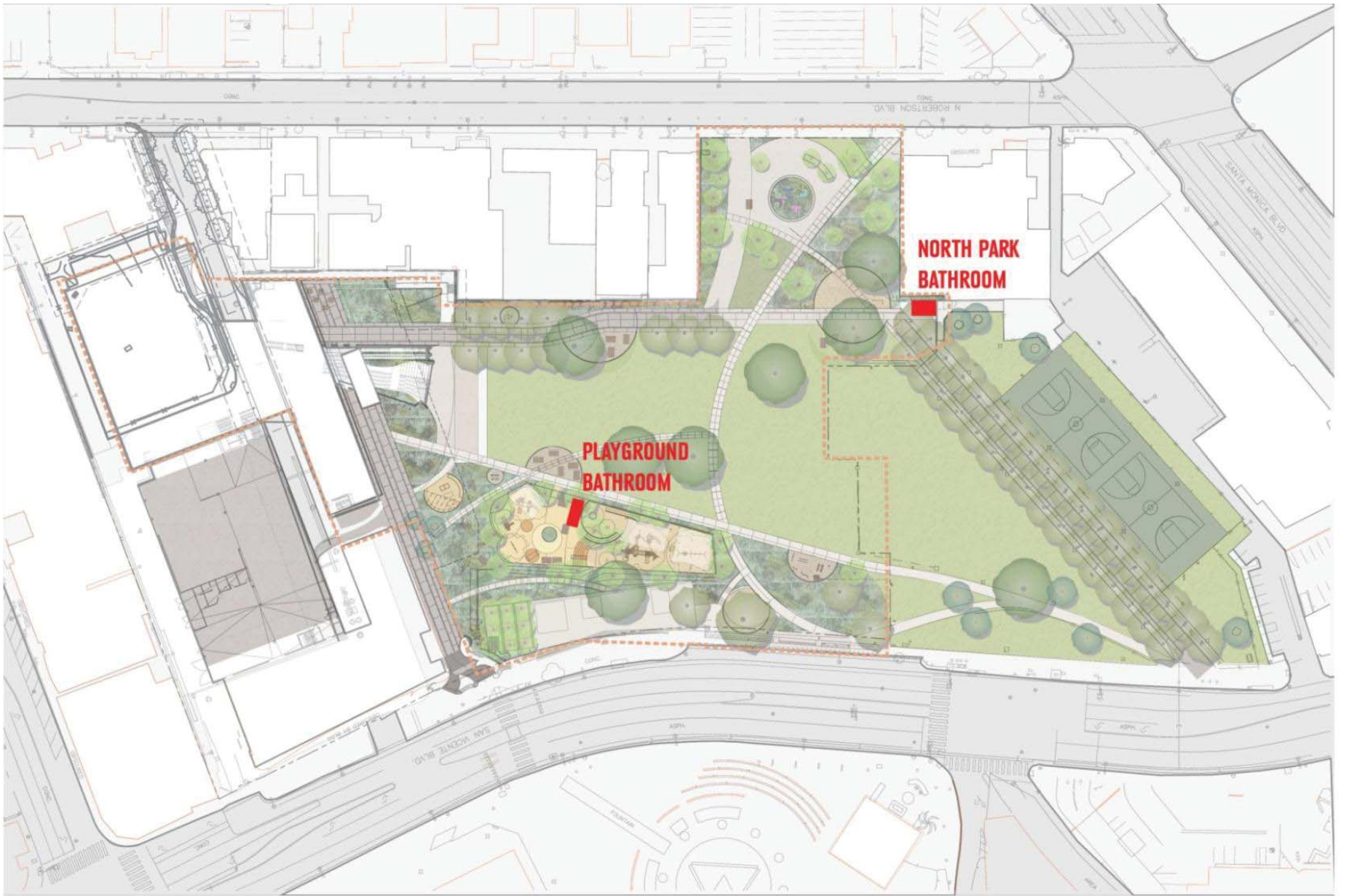
MFG: FORMS + SURFACES
MATERIAL: WOOD & POWDERCOATED ALUMINUM

INITIAL COLOR PALETTES



S I T E F U R N I S H I N G S
P I C N I C T A B L E S

Park Restroom Option



P A R K R E S T R O O M S
P L A N L O C A T I O N S

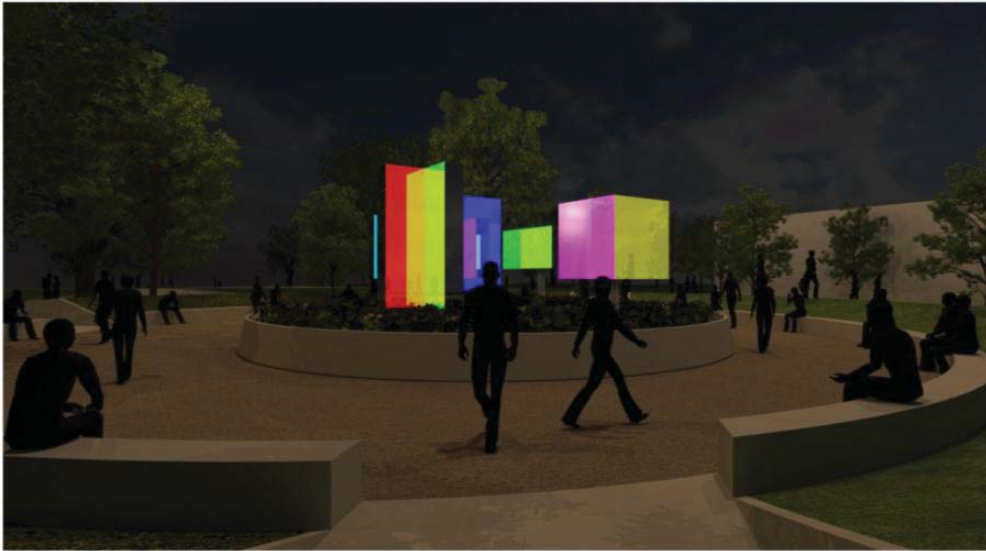
Park Lighting Options



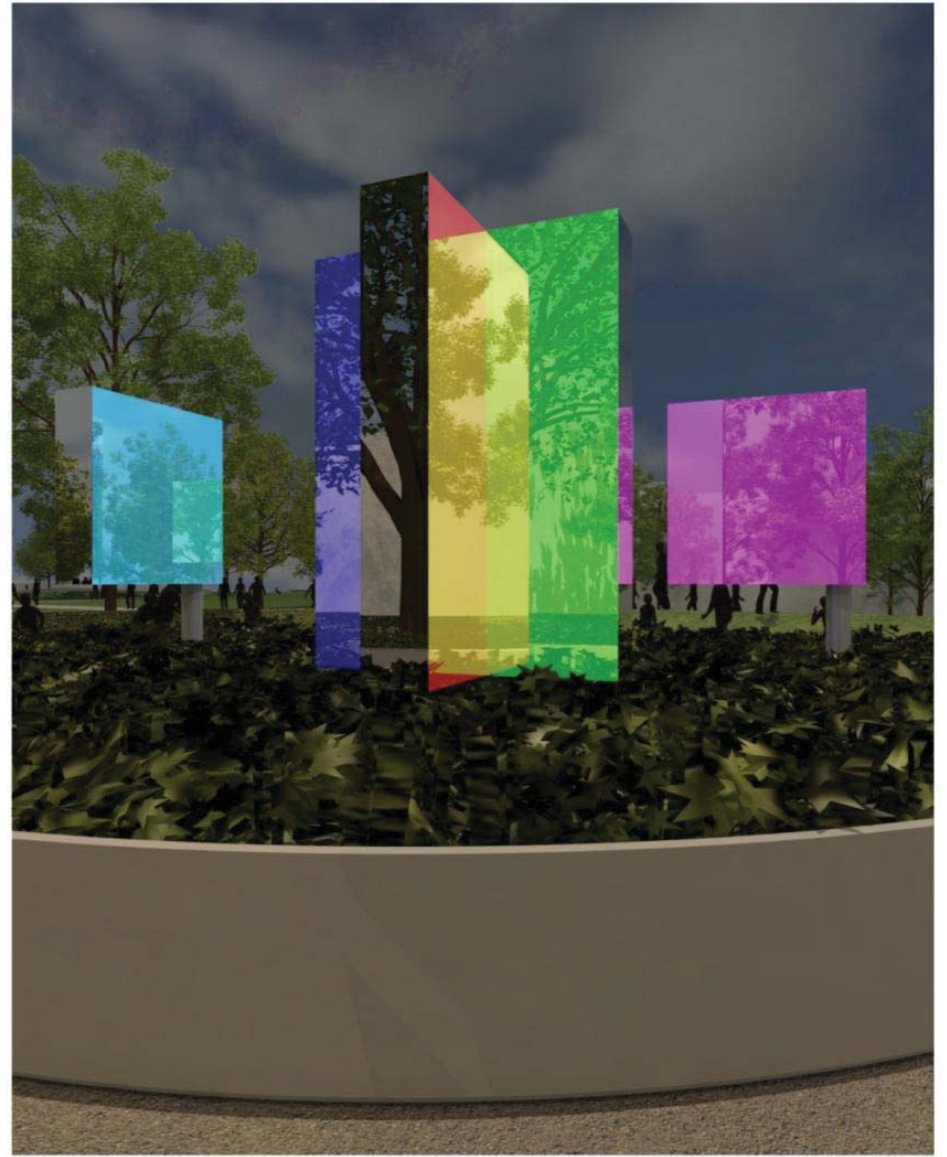
CONCEPTUAL SITE LIGHTING MASTERPLAN



Looking southeast (Day view)



Looking southeast (Night view)



Detail view at dusk

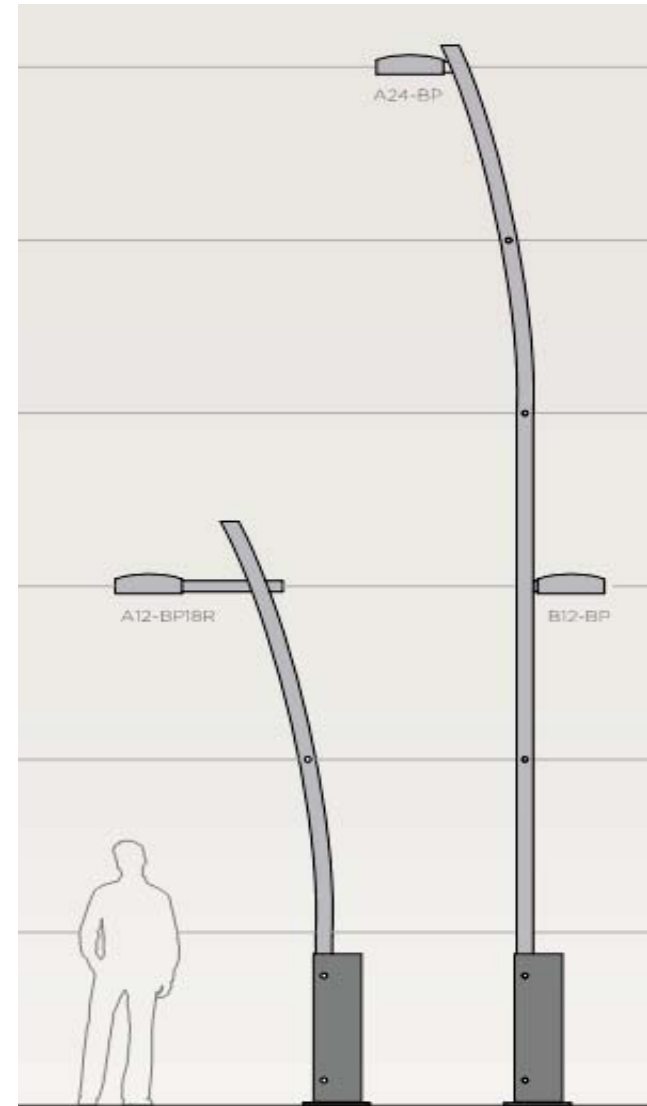
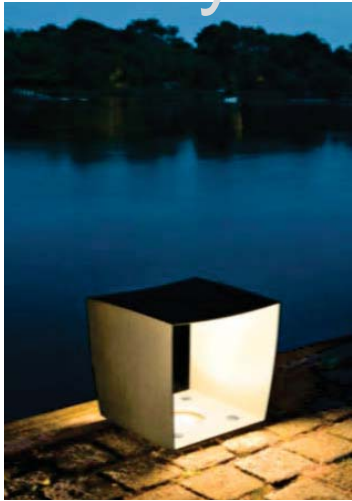
ROBERTSON COMMONS
PHILLIP K SMITH

Creating an Outdoor "Room"



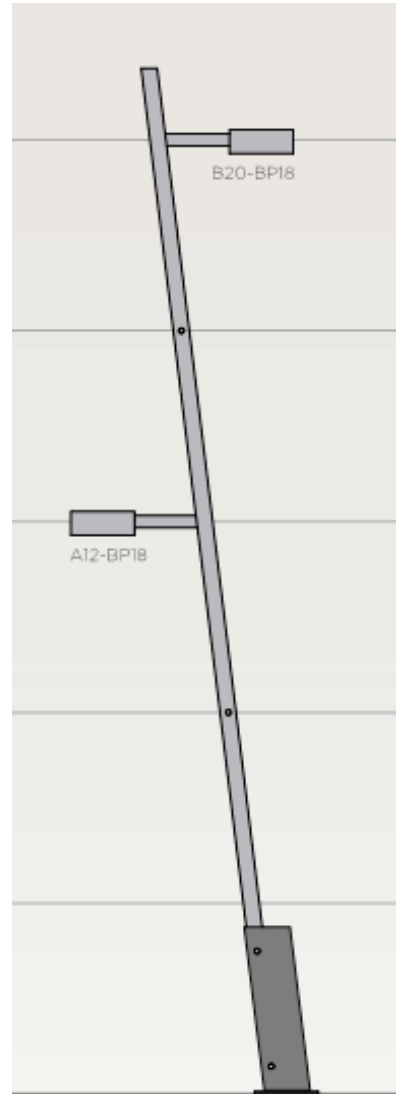
ROBERTSON COMMONS
SPECIALTY LIGHTING

A Family of Fixtures



PARK LIGHTING OPTIONS
CURVILINEAR

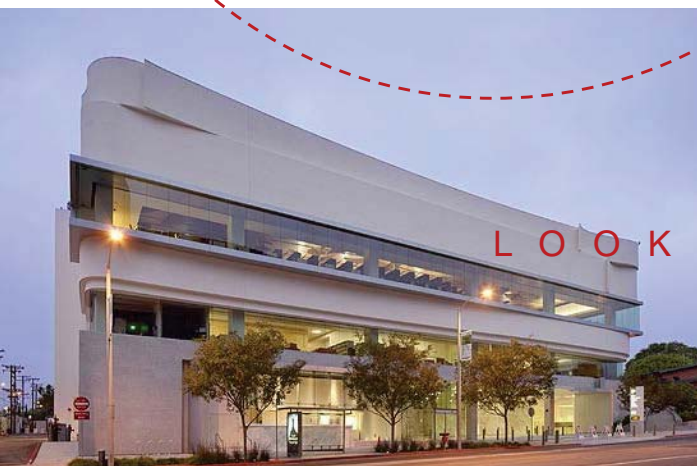
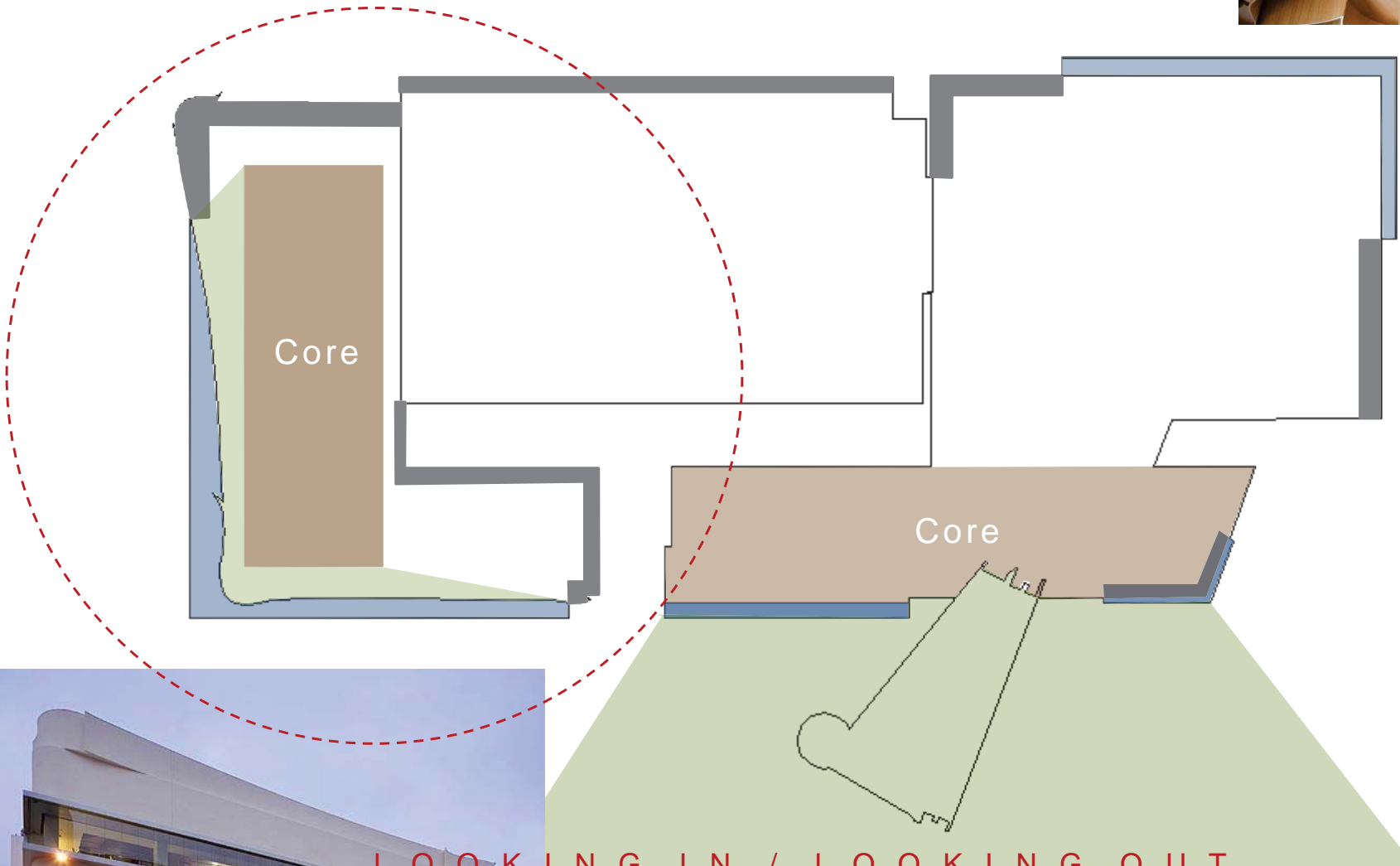
A Family of Fixtures



PARK LIGHTING OPTIONS
ANGULAR

Building Exterior Development

- The “Urban Edge” / The Organic Core
- Responding to CONTEXT and Orientation



LOOKING IN / LOOKING OUT

Basis of Design



earth

Solid / Grounded

Contained Glass
Solid Wall



sky

Light / Ethereal

Glass Walls
Transparency

P R O C E S S

Blending

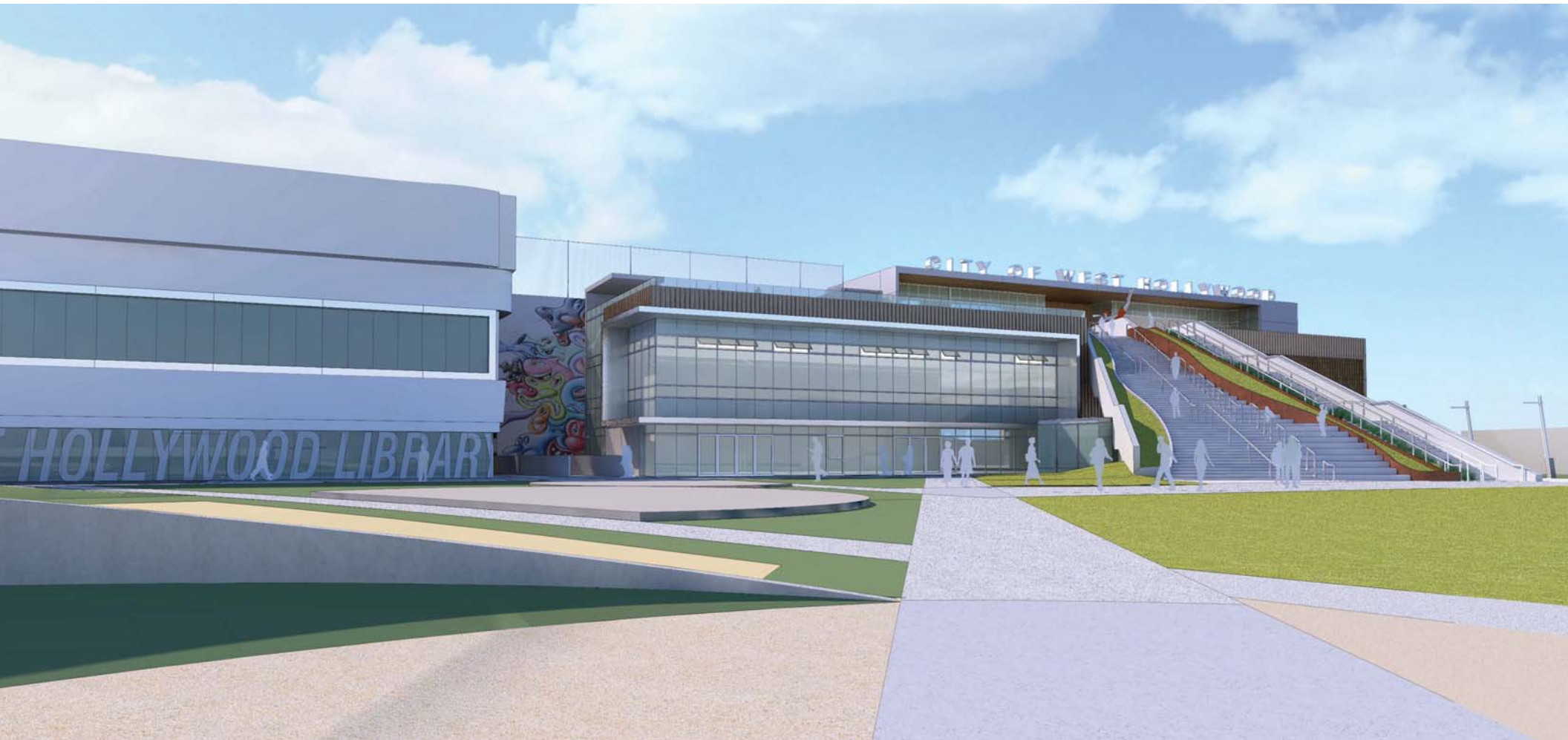
earth / sky

Bringing 'Lightness' to Grounded Materials

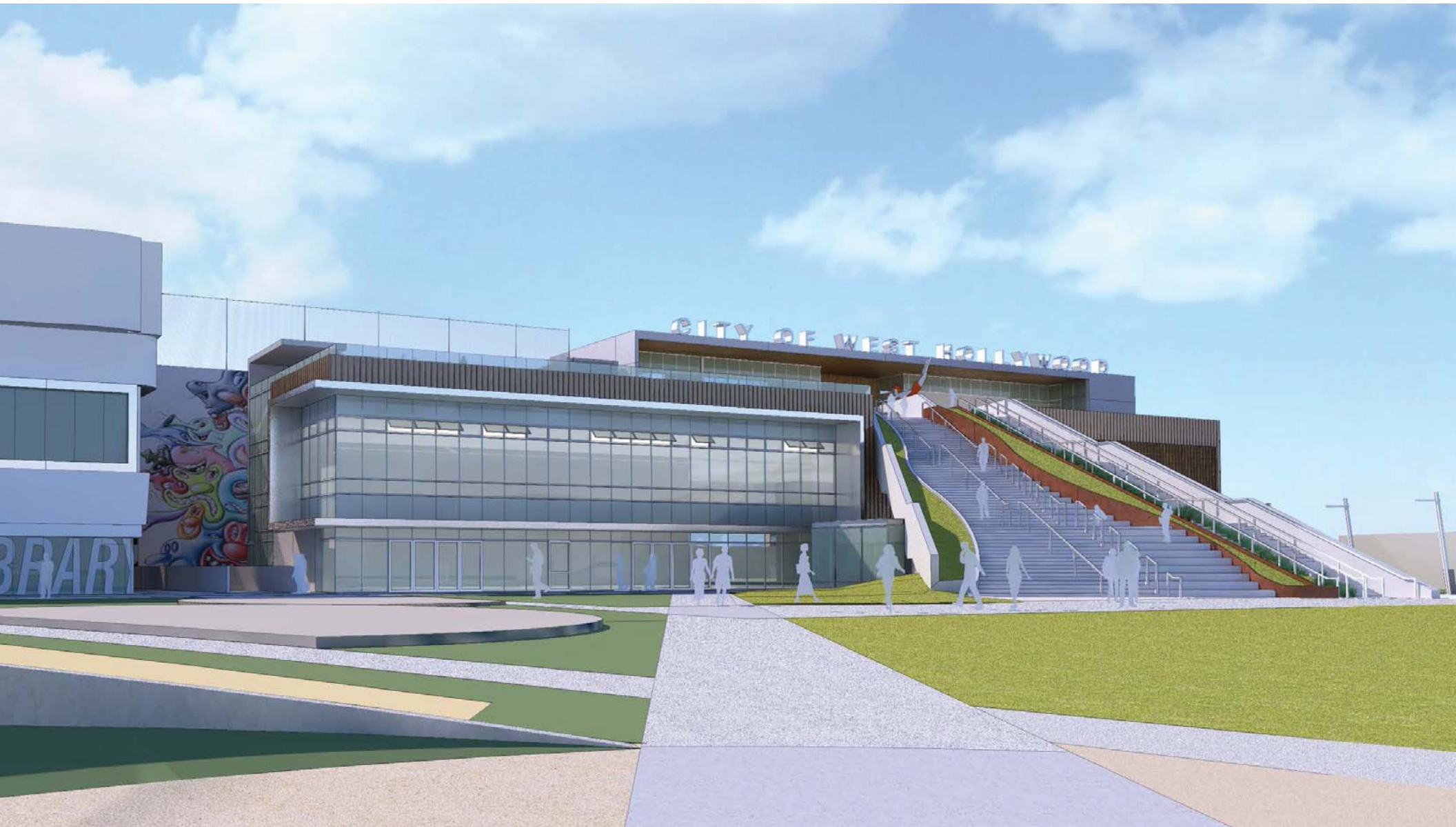


F E N E S T R A T I O N

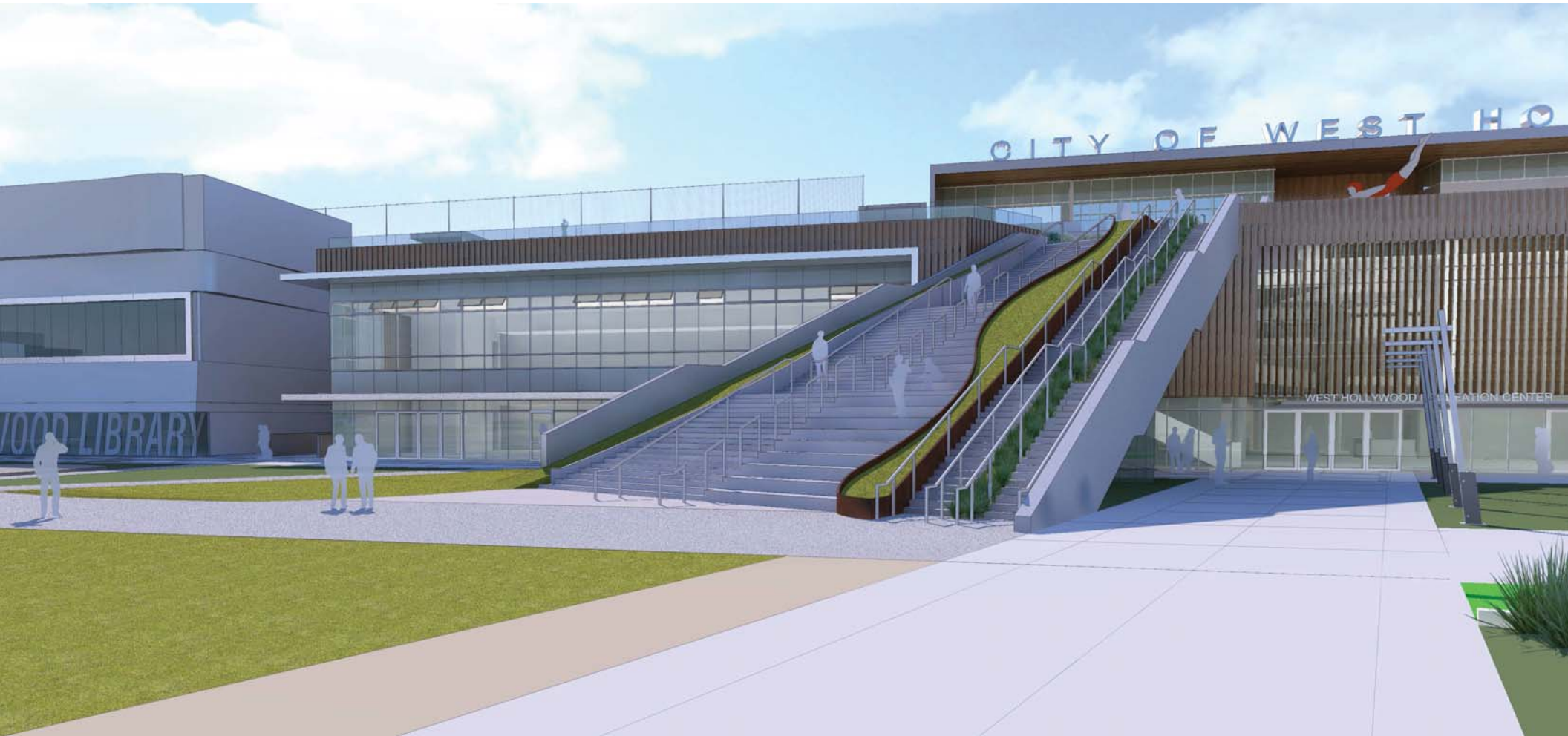
Daylight / Materiality / Function / Orientation / Context



VIEW FROM LIBRARY



VIEW FROM LIBRARY



VIEW TOWARD ENTRY

Selection Basis

- Materials must strengthen and confirm the integrity of the overall design approach
- Materials must support a sustainable design approach
- Materials must be durable and easy to maintain
- Materials must be timeless
- Materials should relate to the overall context
- Materials must respect project budget and sensibilities

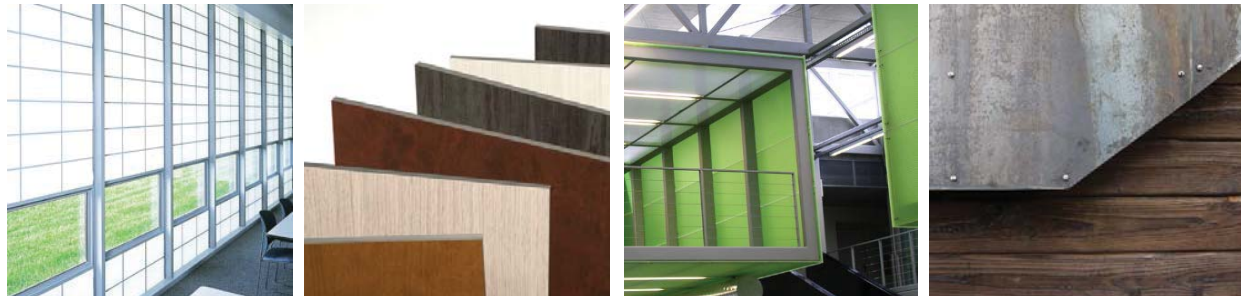


M A T E R I A L S
B A S I S

CONTEXT

Commonalities: Vision Glass / General Wall Color / Metals

- Accent Material (Trespa / Resysta / Corten Steel)
- Specialty “Glass” (Kalwall, Panelite)
- Specialty Metals (Alucobond, Corten, Textured Metals)
- Specialty Color (Paint, Metal,)
- Concrete (Color, Texture)
- Decking (Material , Color)



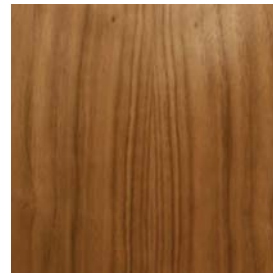
M A T E R I A L S
E X T E R I O R P A L E T T E S



Brushed Metals



Trespa "Wood" Panels



Silver Alucobond Panels

Kalwall Panels

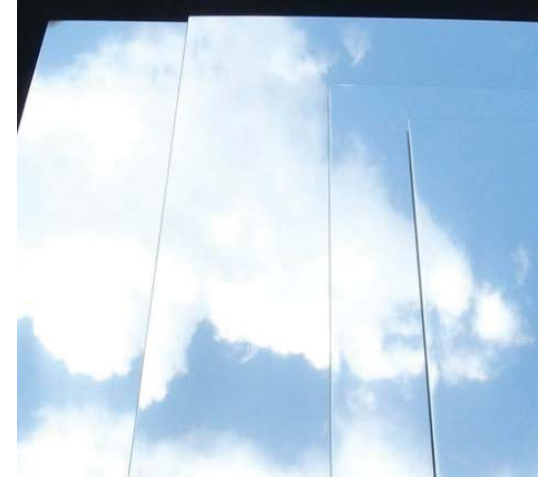


EXTERIOR MATERIALS
PALETTE OPTION A



Resysta "Wood"

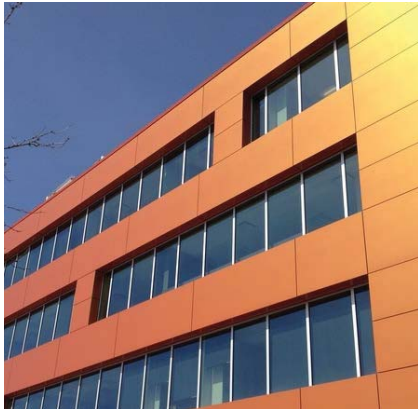
Polished Metals



Clear Panelite Panels



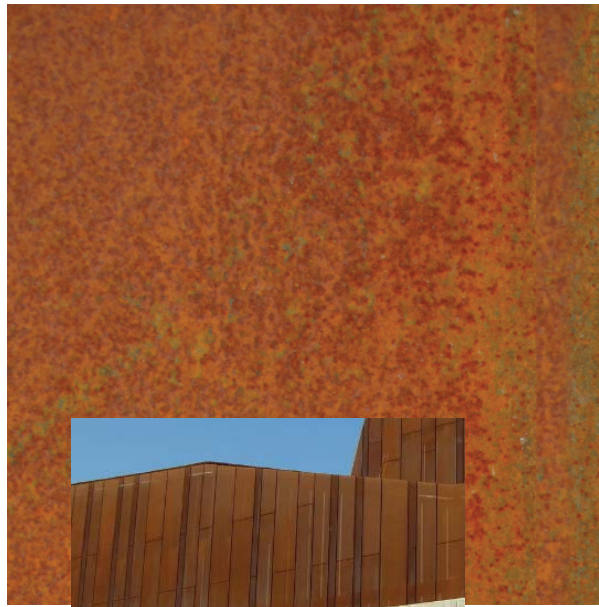
Color Alucobond Panels



EXTERIOR MATERIALS
PALETTE OPTION B



Corten Steel



White Alucobond Panels



Tinted Panelite



Painted Metals



EXTERIOR MATERIALS
PALETTE OPTION C

Building Lighting



Pool Deck



Respite Deck



Stairs

The Aquatic Deck

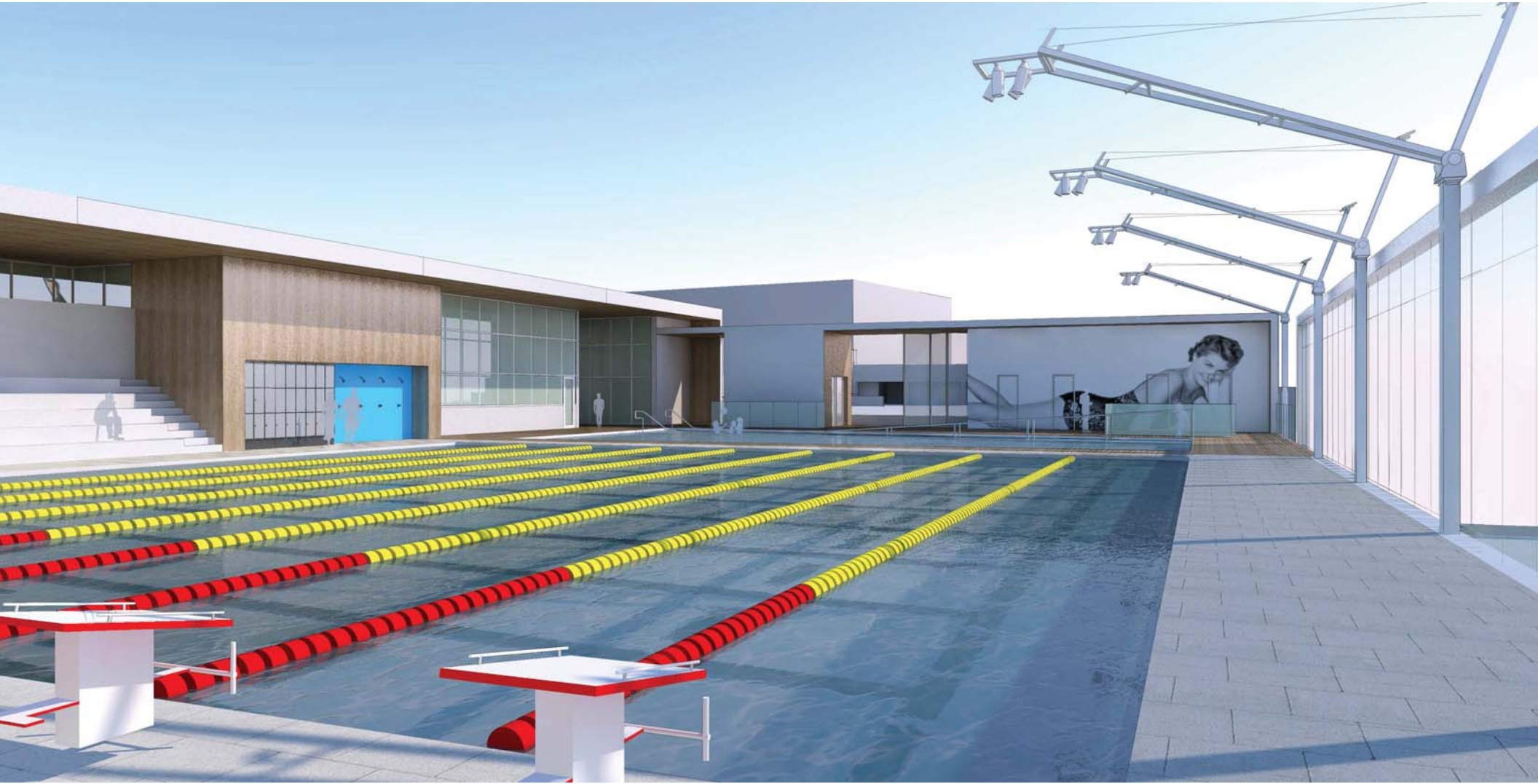


VINTAGE/ RELEVANT



POOL DECK
GRAPHIC





VIEW OF POOL DECK
LIGHTING

Building Interior Development

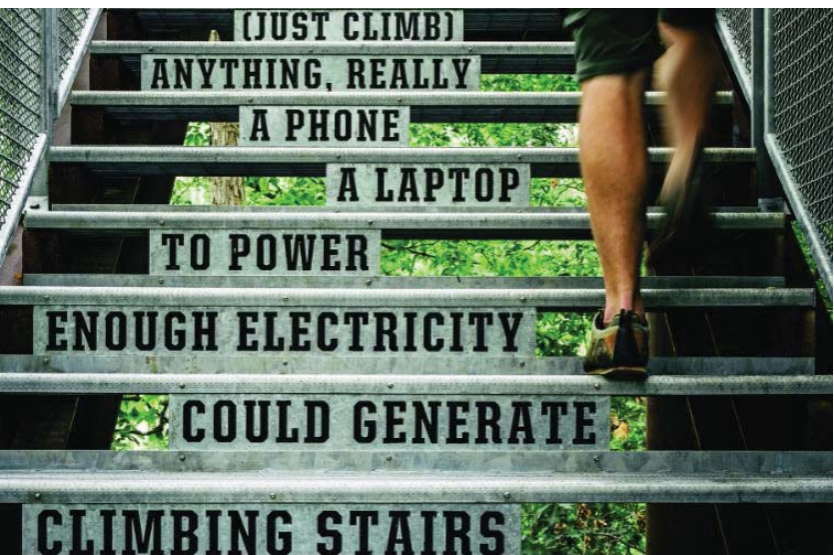
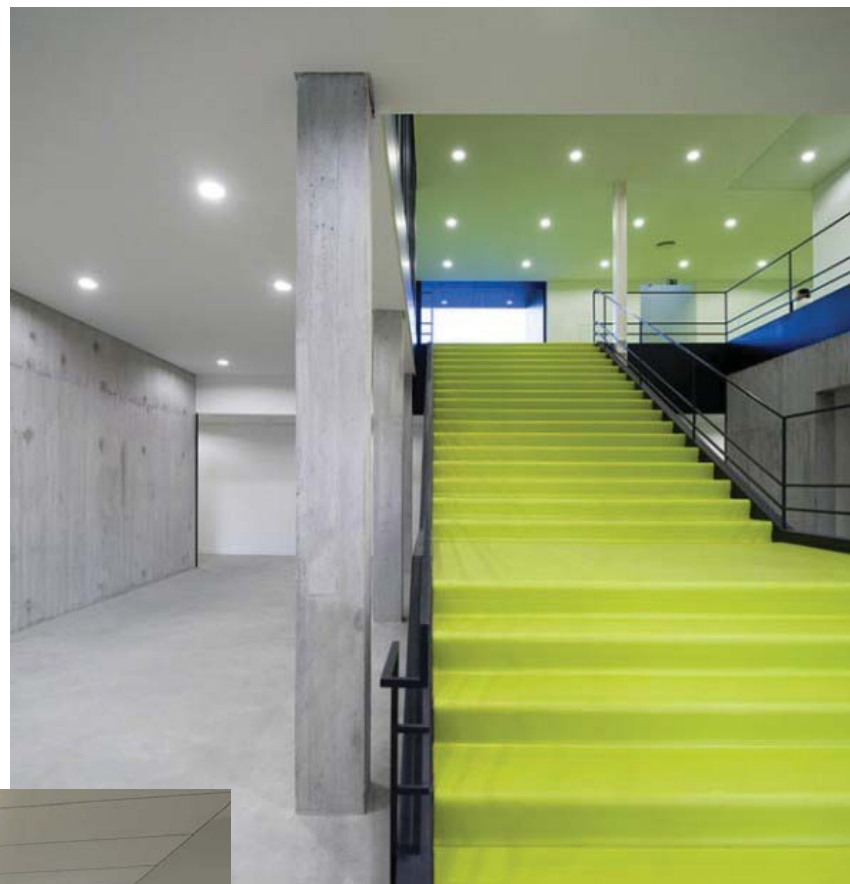
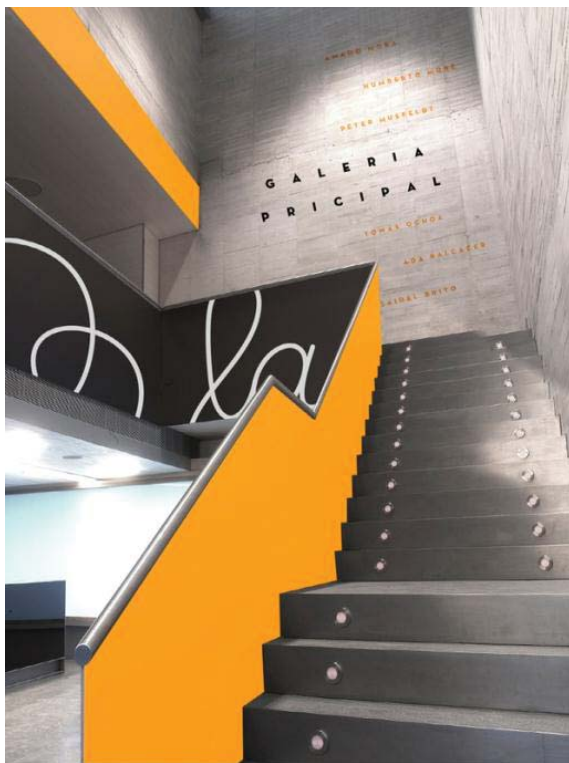


LAYERING



ENTRY LOBBY





S T A I R S

TRANSPARENT / ENGAGING



VIEW OF ENTRY LOBBY



V I E W O F L O B B Y B R I D G E



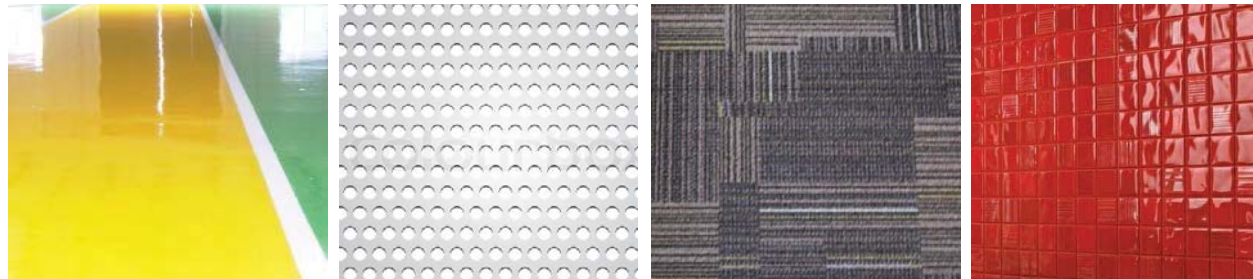


V I E W O F S P O R T S C O U R T S

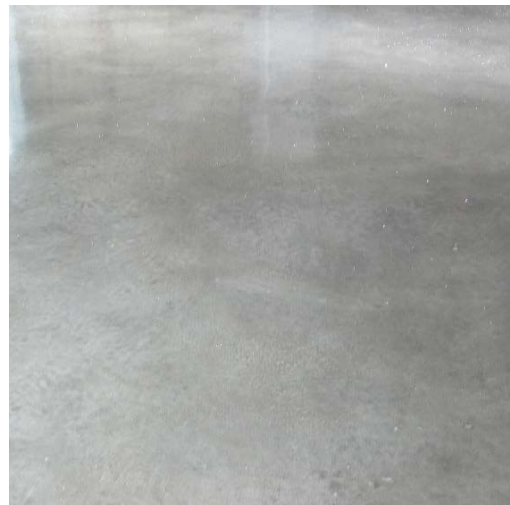
CONTEXT

Commonalities: Vision Glass / General Wall Color / Metals

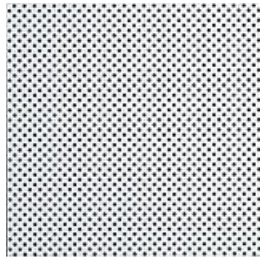
- General Flooring (Concrete, Epoxy, Rubber)
- Specialty “Glass” (Kalwall, Panelite, 3 Form)
- Specialty Metals (Wood, Alucobond, Textured Metals, Stainless Steel)
- Specialty Color (Paint, Metal, Millwork, Tile, Solid Surface)
- Carpet (Active, Passive)
- Restrooms (Tile, Partitions, Solid Surface)



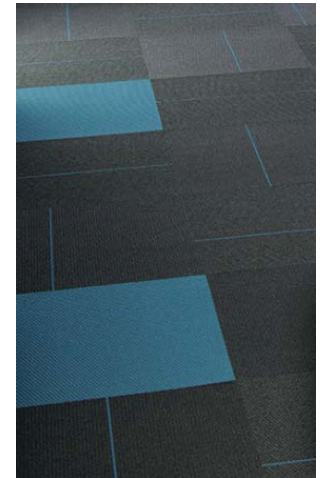
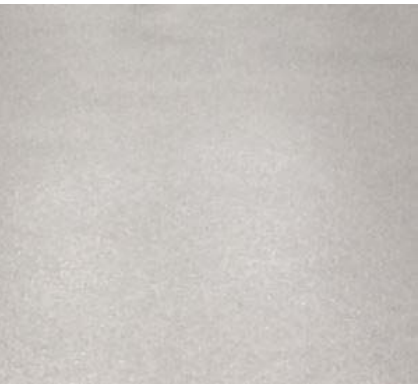
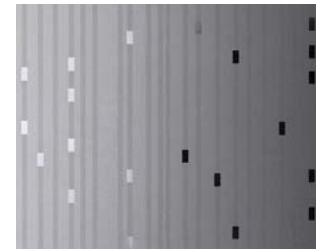
M A T E R I A L S
I N T E R I O R P A L E T T E S



High Contrast/ Bold Color

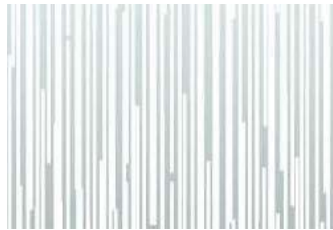
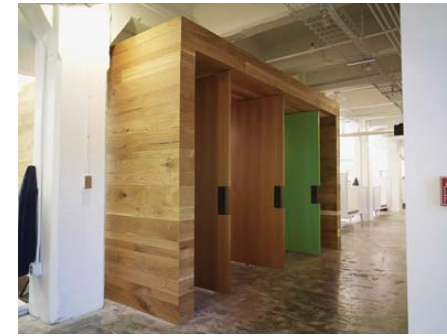


INTERIOR MATERIALS
PALETTE OPTION A



Geometric / Blended Color

INTERIOR MATERIALS
PALETTE OPTION B



Simple Geometry / Warmer Color

INTERIOR MATERIALS
PALETTE OPTION C

N E X T S T E P S

Council Presentation / Initial Design Development

November 17th

Pop Up Event [West Hollywood Park]

November 22, 2014

Steering Committee Meeting

December 2, 2014

Planning Commission

December 4, 2014

Council Meeting / Completion of Design Development

February 2, 2015

P R O J E C T S C H E D U L E

Questions / Comments