

# 1343 LAUREL AVENUE: SURVEY RESULT PROFILES

These user profiles are based on data gathered through an online survey as part of the Community Visioning outreach for 1343 N. Laurel Avenue. The survey was administered between September 17 – October 11, 2013. In total 246 respondents participated.



**LIVE NEAR THE PROPERTY**  
37%



**REPRESENT LOCAL COMMUNITY ORG.**  
10%



**MOVING TO WEST HOLLYWOOD**  
4%



**VISIT OFTEN, NOT A RESIDENT**  
17%



**WEST HOLLYWOOD RESIDENT**  
65%



**LOCAL BUSINESS OWNER**  
4%



**WORK IN WEST HOLLYWOOD**  
26%



**WEST HOLLYWOOD CITY OFFICIAL**  
8%

**SUPPORTED USES**

PARK/OPEN SPACE	75%
CULTURAL USE	69%
RECREATION USE	58%
PET-ORIENTED USE	37%
LGBT-ORIENTED	31%

PARK/OPEN SPACE	77%
CULTURAL USE	68%
RECREATION USE	55%
COMMUNITY/SOCIAL	42%
EDUCATIONAL USE or LGBT-ORIENTED	32%

PARK/OPEN SPACE	73%
EDUCATIONAL USE	73%
CULTURAL USE	64%
COMMUNITY/SOCIAL	55%
RECREATION USE or SENIOR-ORIENTED	46%

PARK/OPEN SPACE	70%
CULTURAL USE	70%
RECREATION USE	65%
LGBT-ORIENTED USE	43%
EDUCATIONAL USE	38%

PARK/OPEN SPACE	72%
CULTURAL USE	68%
RECREATION USE	50%
LGBT-ORIENTED USE	34%
PET-ORIENTED USE	30%

CULTURAL USE	100%
PARK/OPEN SPACE	89%
RECREATION USE	44%
LGBT-ORIENTED	44%
COMMUNITY/SOCIAL or MEMORIAL USE	33%

PARK/OPEN SPACE	82%
CULTURAL USE	69%
RECREATION USE	43%
COMMUNITY/SOCIAL	41%
EDUCATIONAL USE	35%

PARK/OPEN SPACE	84%
CULTURAL USE	68%
RECREATION USE	58%
PET-ORIENTED USE	42%
EDUCATIONAL USE	32%

**UNSUPPORTED USES**

PARKING	82%
COMMERCIAL USE	73%
OFFICE	65%
RESIDENTIAL USE	61%
PRIVATE USE	58%

COMMERCIAL USE	71%
PARKING	67%
RESIDENTIAL USE	57%
PRIVATE USE	57%
OFFICE USE	48%

PRIVATE USE	82%
COMMERCIAL USE	64%
OFFICE USE	46%
RESIDENTIAL USE	46%
PARKING	46%

PARKING	78%
COMMERCIAL USE	70%
PRIVATE USE	57%
OFFICE USE	54%
RESIDENTIAL USE	51%

PARKING	77%
COMMERCIAL USE	71%
OFFICE USE	63%
PRIVATE USE	57%
RESIDENTIAL USE	48%

OFFICE USE	89%
COMMERCIAL USE	78%
PARKING	78%
PRIVATE USE	67%
RESIDENTIAL USE	44%

PARKING	76%
COMMERCIAL USE	70%
PRIVATE USE	57%
OFFICE USE	54%
RESIDENTIAL USE	35%

COMMERCIAL USE	79%
OFFICE USE	79%
PARKING	74%
PRIVATE USE	68%
RESIDENTIAL USE	32%

**ISSUES 2 CONSIDER**

HISTORIC STRUCTURES	76%
MATURE TREES	76%
PEDESTRIAN ACCESS	49%
NOISE	49%
SAFETY	39%

HISTORIC STRUCTURES	77%
MATURE TREES	64%
NOISE	41%
PEDESTRIAN ACCESS	36%
DIVERSE OPINIONS	36%

HISTORIC STRUCTURES	64%
SAFETY	64%
PARKING	64%
MATURE TREES	55%
PEDESTRIAN ACCESS	46%

HISTORIC STRUCTURES	76%
MATURE TREES	70%
SAFETY	43%
PEDESTRIAN ACCESS	41%
NOISE	35%

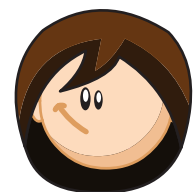
HISTORIC STRUCTURES	81%
MATURE TREES	77%
PEDESTRIAN ACCESS	51%
NOISE	41%
SAFETY	33%

HISTORIC STRUCTURES	89%
MATURE TREES	89%
PEDESTRIAN ACCESS	56%
NOISE	44%
PARKING	33%

HISTORIC STRUCTURES	67%
MATURE TREES	65%
PEDESTRIAN ACCESS	52%
NOISE	44%
PARKING	41%

HISTORIC STRUCTURES	90%
MATURE TREES	74%
PARKING	53%
SAFETY	42%
DIVERSE OPINIONS	42%

**HISTORIC STATUS OF PROPERTY INFLUENCES MY OPINION ABOUT FUTURE USES**



82%



71%



73%



85%



80%



100%



81%



74%